



## SUPERB 4 BEDROOM HOUSE IDEALLY LOCATED

Rue de la Pêcheurie 28, 1180 Uccle

<b>Reference</b>	6150753
<b>Price</b>	€ 2.995
<b>Ground surface</b>	195m <sup>2</sup>
<b>Living surface</b>	190m <sup>2</sup>
<b>Terrace surface</b>	20m <sup>2</sup>
<b>Bedrooms</b>	4
<b>Bathrooms</b>	2

## Description

Located in the prestigious Saint-Job district, this charming 160 square metre house has 4 bedrooms.

Inside, the ground floor comprises an entrance hall, a lovely, light-filled living area, a convivial dining room and a fitted kitchen.

Upstairs, the property has 3 bedrooms and a bathroom. The bedrooms are generously proportioned, offering comfort and privacy for all members of the family. The pleasant exterior features a large terrace and a beautifully tended garden.

The basement includes a small studio with bedroom, living room, kitchen and bathroom.

This residence is available immediately.

Please contact me on 0492 40 78 05 or [noah@fierceimmo.com](mailto:noah@fierceimmo.com) for more information.

## Essential info

<b>Reference</b>	6150753
<b>Type</b>	House
<b>Ground surface</b>	195m <sup>2</sup>
<b>Living surface</b>	190m <sup>2</sup>
<b>Terrace surface</b>	20m <sup>2</sup>
<b>Garden surface</b>	135m <sup>2</sup>
<b>Year of construction</b>	1930
<b>Availability</b>	Tbd with the owner

## Required info

<b>EPC Value</b>	518
<b>EPC Label</b>	G
<b>Urban planning destination</b>	Unknown
<b>Urban planning permit</b>	Unknown
<b>Subdivision permit</b>	Unknown
<b>Summons</b>	Unknown
<b>Court decision</b>	Unknown
<b>Right to sell</b>	Unknown
<b>O-Level</b>	Not located in flood area

## Layout

<b>Toilets</b>	2
<b>Parking places</b>	1



# FIERCE

I M M O



# FIERCE

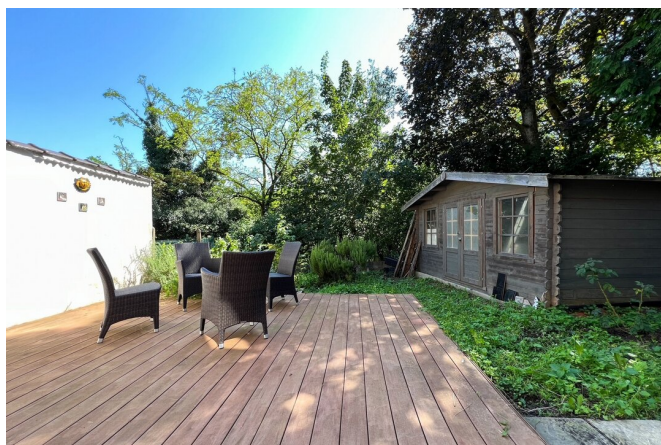
I M M O





# FIERCE

I M M O





# FIERCE

I M M O



## Interested in this estate?

Contact us for more information



### Noah Todaro

Conseiller immobilier | Ventes | Locations - IPI  
800.066

- T. +32 492 40 78 05
- E. [noah@fierceimmo.com](mailto:noah@fierceimmo.com)



# FIERCE

I M M O