



BUSINESS + ATTACHED HOUSING

Chaussée de Waterloo 1000A, 1180 Uccle

Reference	6107403
Price	€ 2.500
Ground surface	150m ²
Living surface	120m ²

Description

ideally located on the Chaussée de Waterloo, this 120m² commercial premises benefits from exceptional visibility. This sector is known for its dynamism and commercial attractiveness, offering a perfect environment to develop your business.

This business has an adjoining accommodation of 40m².

Spacious display cases are ideal for promoting your ideas. With its 120m², this space offers great adaptability to meet your specific planning needs.

Easily accessible via public transport and with plenty of parking spaces nearby, this business is perfectly located to attract a varied clientele.

You can contact me on 0492 40 78 05 or at noah@fierceimmo.com for more information.

Essential info

Reference	6107403
Type	Commercial
Ground surface	150m ²
Living surface	120m ²
Year of construction	1970
Availability	Immediately

Required info

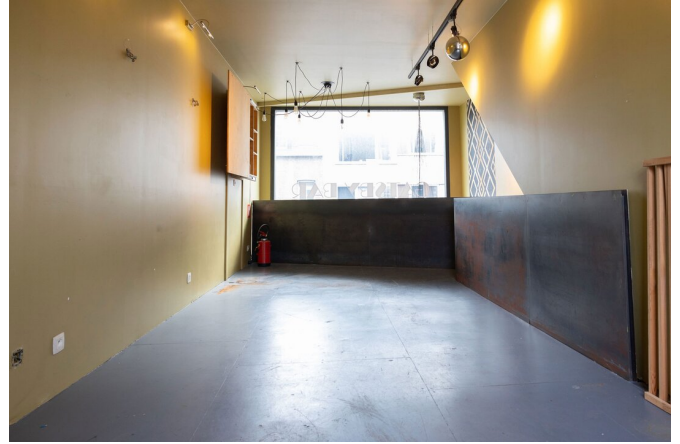
Urban planning destination	Unknown
Urban planning permit	Unknown
Subdivision permit	Unknown
Summons	Unknown
Court decision	Unknown
Right to sell	Unknown
O-Level	Not located in flood area

Layout

Toilets 2

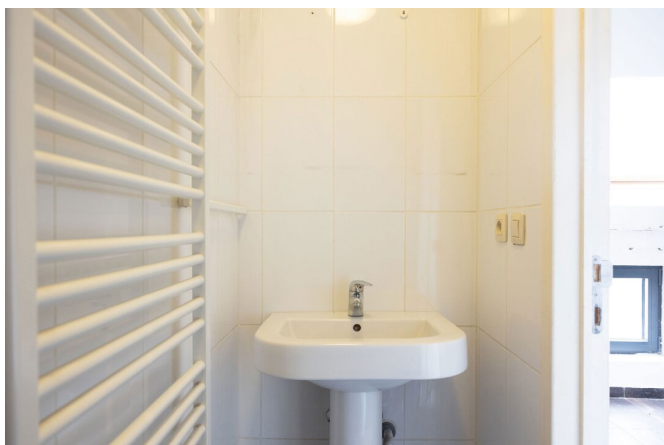
FIERCE

I M M O



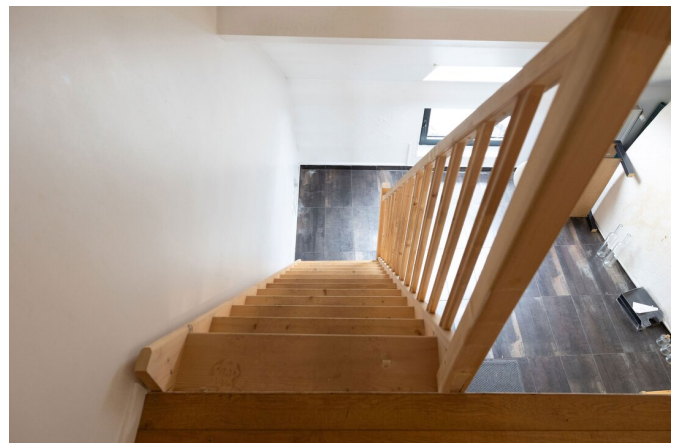
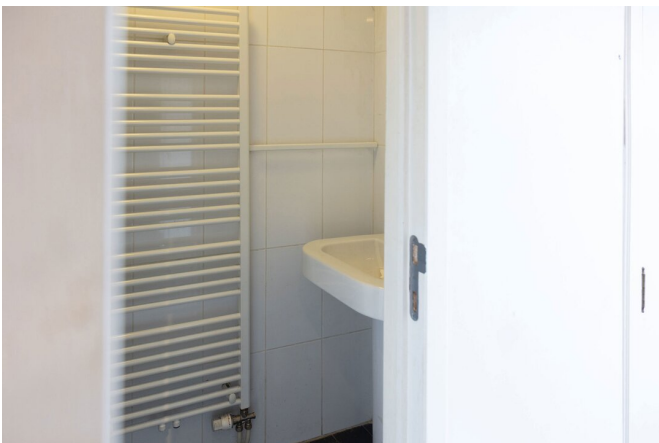
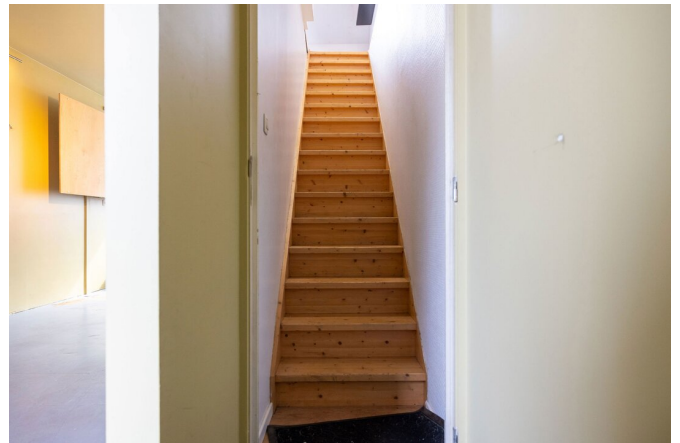
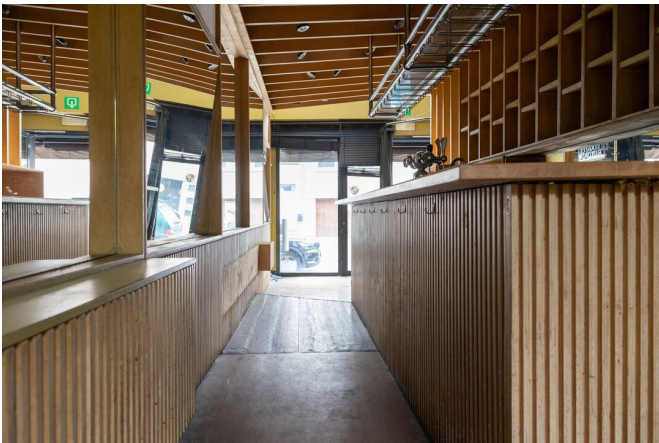
FIERCE

I M M O



FIERCE

I M M O



FIERCE

I M M O



Interested in this estate?

Contact us for more information



Noah Todaro

Conseiller immobilier | Ventes | Locations - IPI
800.066

- T. +32 492 40 78 05
- E. noah@fierceimmo.com

FIERCE

I M M O