



BUSINESS IDEALLY LOCATED

Reference	6693311
Price	€ 1.000
Ground surface	200m ²
Living surface	60m ²

FIERCE

I M M O

Description

Ideally located in the heart of Ixelles and close to all amenities, this 60 m² commercial space offers excellent visibility.

This ground-floor unit consists of two spacious adjoining rooms, a rear kitchen, and a basement room (ideal for use as an office or private treatment room).

Renovation work is required to adapt the space to your business needs.

For more information or to schedule a visit, please call +32 492 40 78 05 or email noah@fierceimmo.com.

Essential info

Reference	6693311
Type	Commercial
Ground surface	200m ²
Living surface	60m ²
Year of construction	1950
Availability	Immediately

Required info

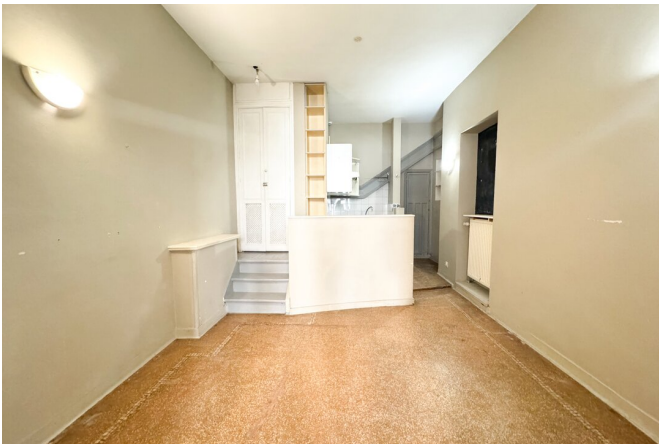
Urban planning destination	Unknown
Urban planning permit	Unknown
Subdivision permit	Unknown
Summons	Unknown
Court decision	Unknown
Right to sell	Unknown
O-Level	Not located in flood area

Layout

Toilets 1

FIERCE

I M M O





FIERCE

I M M O



Interested in this estate?

Contact us for more information



Noah Todaro

Conseiller immobilier | Ventes | Locations - IPI
800.066

- T. +32 492 40 78 05
- E. noah@fierceimmo.com

FIERCE

I M M O