



BEAUTIFUL FLAT 1BED (NEW CONSTRUCTION) + BIG TERRACE

Digue du Canal 115 11.05, 1070 Anderlecht

FIERCE

I M M O

Reference	5396237
Price	€ 1.300
Ground surface	578m ²
Living surface	68m ²
Terrace surface	15m ²
Bedrooms	1
Bathrooms	1
Garages	1

Description

On the edge of the canal, offering a unique view of Brussels, discover this NEW apartment on the 11th floor of the Atlantis project. The property is composed as follows: armored door, entrance hall, separate WC, living room with hyper-equipped American kitchen, large terrace with open view of Brussels and the canal, bedroom with shower room (and laundry area). Cellar included and parking space (not mandatory, extra). PEB B. Very low common charges. To visit !

Essential info

Reference	5396237
Type	Flat
Ground surface	578m ²
Living surface	68m ²
Terrace surface	15m ²
Year of construction	2019
Availability	Immediately
Elevator available	Yes

Required info

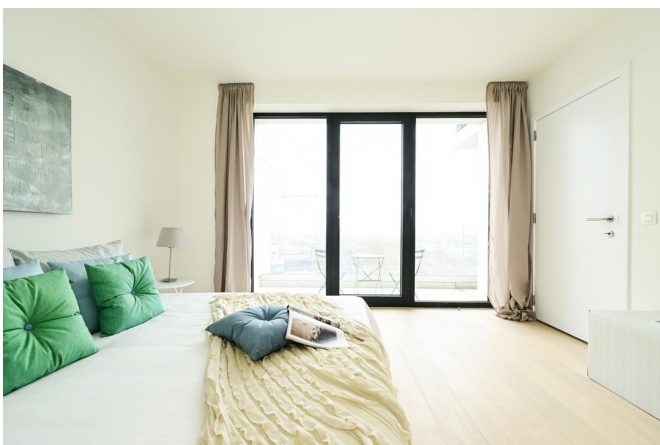
EPC Value	70
EPC Label	B
EPC Code	618958-N-1-85-4-3
Urban planning destination	Unknown
Urban planning permit	Unknown
Subdivision permit	Unknown
Summons	Unknown
Court decision	Unknown
Right to sell	Unknown
O-Level	Not located in flood area

Layout

Toilets	1
Garages	1
Parking places	1

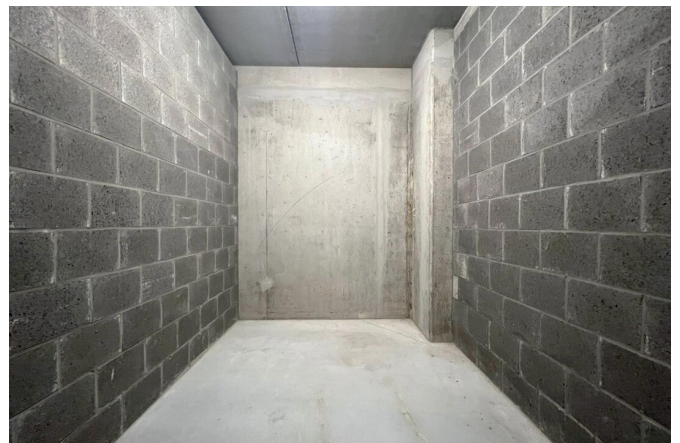
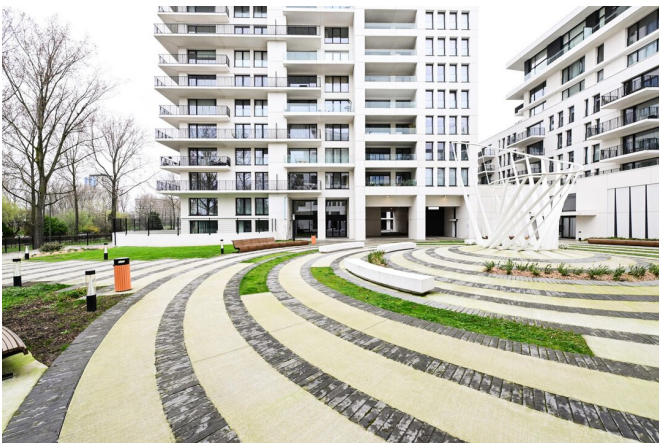
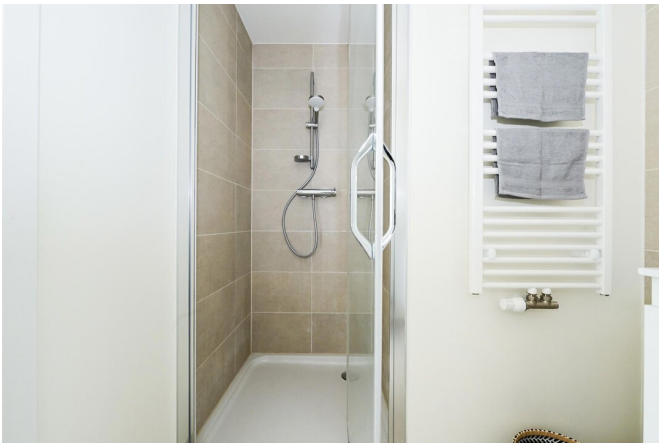
FIERCE

I M M O



FIERCE

I M M O



FIERCE

I M M O



Interested in this estate?

Contact us for more information



Noah Todaro

Conseiller immobilier | Ventes | Locations - IPI
800.066

- T. +32 492 40 78 05
- E. noah@fierceimmo.com

FIERCE

I M M O