



Dream penthouse for rent in a magnificent new development!

Avenue du Cimetière de Bruxelles 103, 1140 Evere

FIERCE

I M M O

Reference	6635316
Price	€ 1.550
Ground surface	90m ²
Living surface	95m ²
Terrace surface	10m ²
Bedrooms	2
Bathrooms	2

Description

Between Place Paduwa and the Brussels Cemetery, close to all amenities, major roads and transport, Fierce Immo presents this brand new and magnificent duplex penthouse for rent.

In a small condominium of just 3 units, the apartment offers a separate entrance hall, a super-equipped kitchen, a spacious and bright living area, two beautiful bedrooms, two shower rooms, a separate toilet, two balconies and two large cellars.

All utilities are individual (water, gas, electricity). Common charges are 40 euros per month and include electricity and cleaning of common areas. The individual, high-efficiency gas-fired boiler and triple-glazing are among the reasons for the PEB B rating. No parking, no elevator. Available immediately.

FIERCE

I M M O

Essential info

Reference	6635316
Type	Flat
Ground surface	90m ²
Living surface	95m ²
Terrace surface	10m ²
Year of construction	2023
Availability	Immediately

Required info

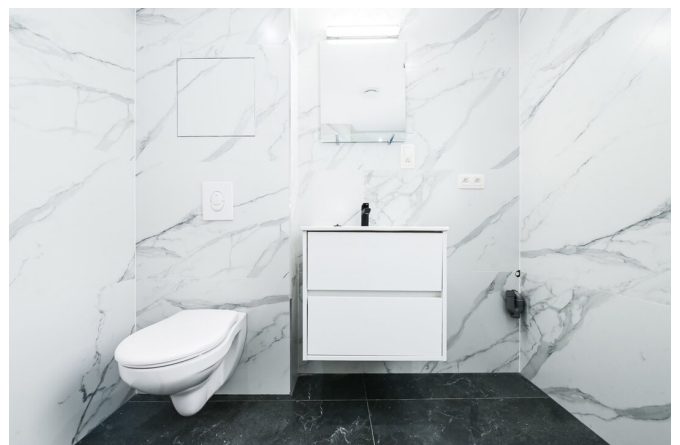
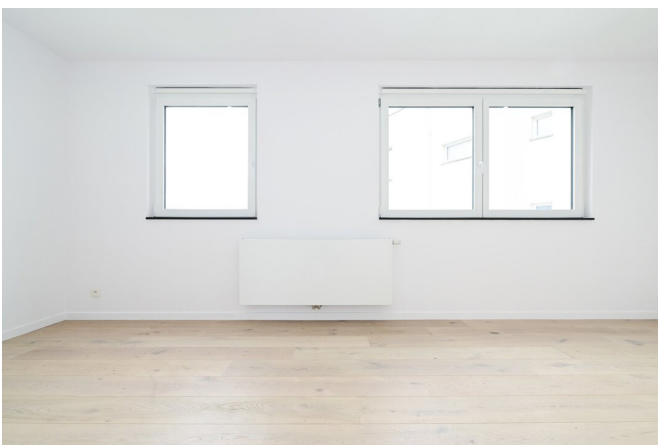
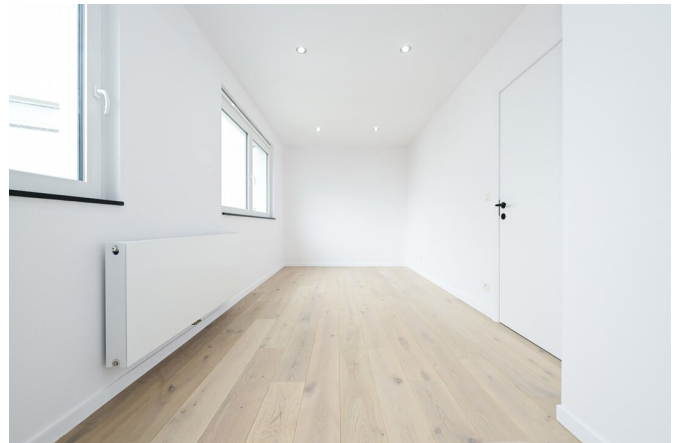
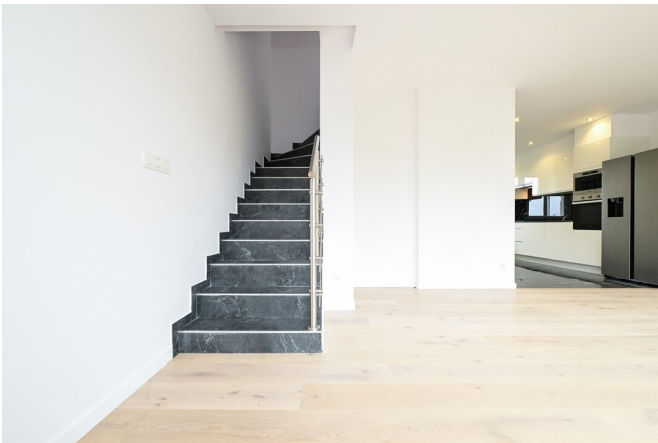
EPC Value	51
EPC Label	B
Urban planning destination	Unknown
Urban planning permit	Unknown
Subdivision permit	Unknown
Summons	Unknown
Court decision	Unknown
Right to sell	Unknown
O-Level	Not located in flood area

Layout

Toilets 2

FIERCE

I M M O



FIERCE

I M M O



FIERCE

I M M O



Interested in this estate?

Contact us for more information



Michaël Baert

Responsible New constructions - IPI 512.639

- T. +32 472 46 93 44
- E. michael@fierceimmo.com

FIERCE

I M M O