



## CHARMING 2-BEDROOM APARTMENT WITH TERRACE

Rue François Ysewyn 65 10, 1070 Anderlecht

# FIERCE

I M M O

Reference	7056306
Price	€ 1.200
Ground surface	229m <sup>2</sup>
Living surface	81m <sup>2</sup>
Terrace surface	8m <sup>2</sup>
Bedrooms	2
Bathrooms	1

## Description

**In a quiet neighborhood of Anderlecht, discover this charming apartment. It offers two pleasant bedrooms as well as a terrace.**

Located on the 2nd floor of a well-maintained small building, the property is laid out as follows:

Entrance into a spacious hall with a cloakroom area, two quiet bedrooms at the rear, separate toilet, bathroom, laundry room, semi-equipped open kitchen leading to a bright living area (living room, dining room) with access to the rear terrace.

Monthly charges of €50 for common areas.

Individual boiler – EPC: E.

**A MUST-SEE!**

## Essential info

<b>Reference</b>	7056306
<b>Type</b>	Flat
<b>Ground surface</b>	229m <sup>2</sup>
<b>Living surface</b>	81m <sup>2</sup>
<b>Terrace surface</b>	8m <sup>2</sup>
<b>Year of construction</b>	2005
<b>Availability</b>	Tbd with the tenant
<b>Elevator available</b>	Yes

## Required info

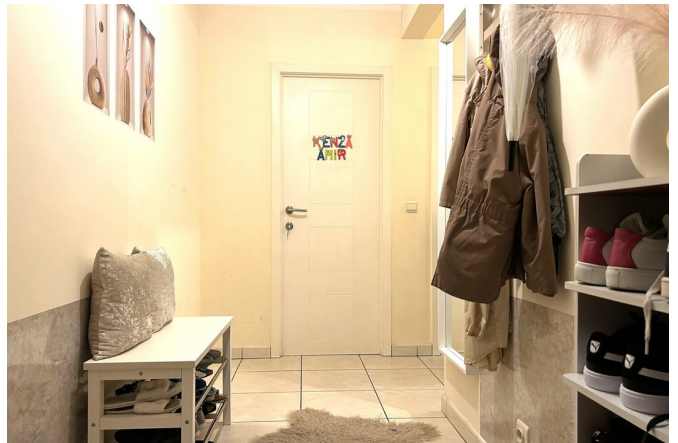
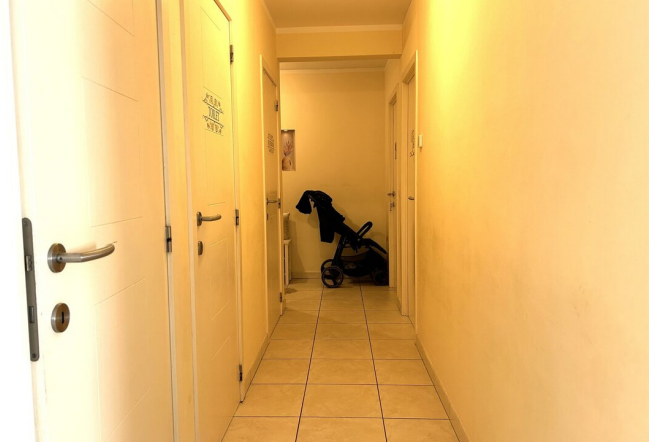
<b>EPC Value</b>	233
<b>EPC Label</b>	E
<b>Urban planning destination</b>	Living zone
<b>Urban planning permit</b>	Unknown
<b>Subdivision permit</b>	Unknown
<b>Summons</b>	Unknown
<b>Court decision</b>	Unknown
<b>Right to sell</b>	Unknown
<b>O-Level</b>	Not located in flood area

## Layout

<b>Toilets</b>	1
----------------	---

# FIERCE

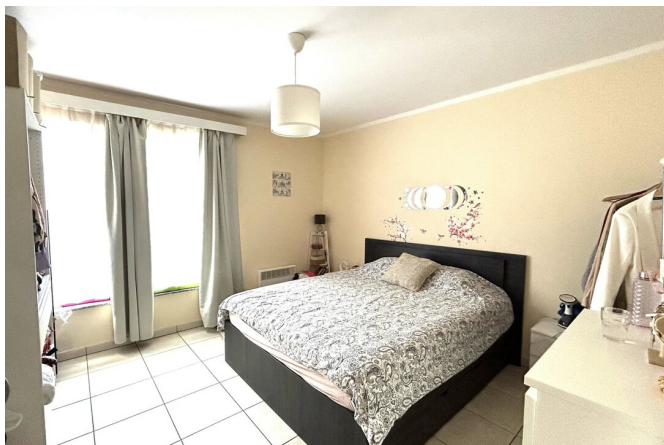
I M M O





# FIERCE

I M M O



## Interested in this estate?

Contact us for more information

Fierce Immo

• T. 02 420 65 01

# FIERCE

I M M O