



## MAGNIFICENT 3-BEDROOM PENTHOUSE IN FORT-JACO

Chaussée de Waterloo 942, 1180 Uccle

# FIERCE

I M M O

|                        |                   |
|------------------------|-------------------|
| <b>Reference</b>       | 7283034           |
| <b>Price</b>           | € 3.400           |
| <b>Ground surface</b>  | 350m <sup>2</sup> |
| <b>Living surface</b>  | 185m <sup>2</sup> |
| <b>Terrace surface</b> | 60m <sup>2</sup>  |
| <b>Bedrooms</b>        | 3                 |
| <b>Bathrooms</b>       | 3                 |

## Description

Located in the immediate vicinity of the Bois de la Cambre in Vert Chasseur, come and discover this magnificent duplex penthouse of  $\pm 185$  m<sup>2</sup>, with a south-facing terrace of  $\pm 60$  m<sup>2</sup>.

The upper floor consists of a large bright living room, a gas fireplace, and a fully equipped open kitchen. The whole offers a very pleasant living space, opening directly onto the spacious terrace.

The lower floor features the night area, composed of three bedrooms, each with its own private bathroom. A laundry room completes this level.

The apartment offers beautiful high-quality finishes, electric blinds, plenty of storage, a cellar, and two underground parking spaces.

The common charges amount to €250 per month.

It benefits from a calm and green environment, just a few steps from the Bois de la Cambre and the Forêt de Soignes, while remaining close to shops, the European School, and sports facilities.

For any further information or to arrange a visit, please feel free to contact me.

# FIERCE

I M M O

## Essential info

|                             |                   |
|-----------------------------|-------------------|
| <b>Reference</b>            | 7283034           |
| <b>Type</b>                 | Flat              |
| <b>Ground surface</b>       | 350m <sup>2</sup> |
| <b>Living surface</b>       | 185m <sup>2</sup> |
| <b>Terrace surface</b>      | 60m <sup>2</sup>  |
| <b>Year of construction</b> | 2017              |
| <b>Availability</b>         | Immediately       |
| <b>Elevator available</b>   | Yes               |

## Required info

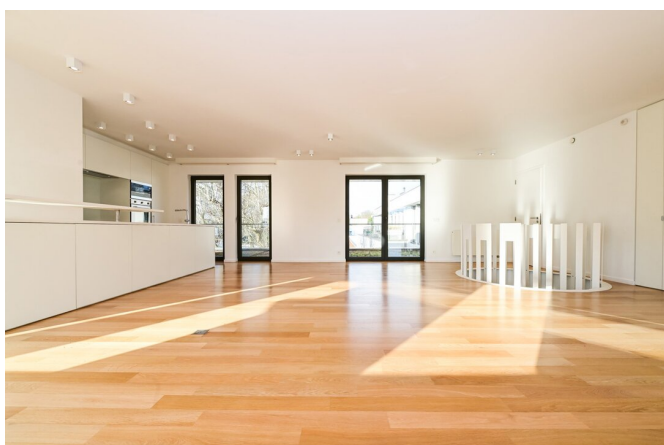
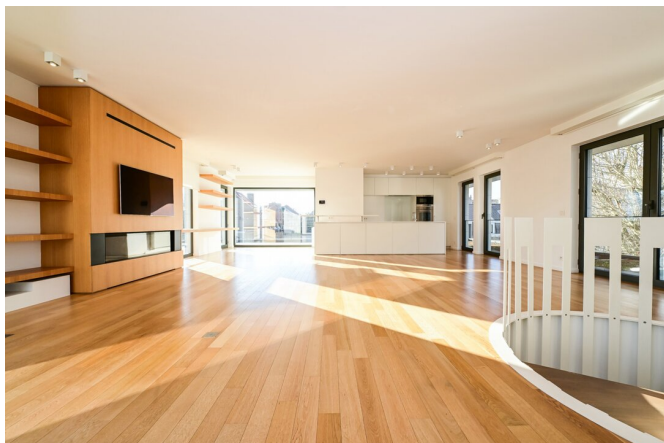
|                                   |                           |
|-----------------------------------|---------------------------|
| <b>EPC Value</b>                  | 96                        |
| <b>EPC Label</b>                  | C                         |
| <b>EPC Code</b>                   | 618877                    |
| <b>Urban planning destination</b> | Unknown                   |
| <b>Urban planning permit</b>      | Unknown                   |
| <b>Subdivision permit</b>         | Unknown                   |
| <b>Summons</b>                    | Unknown                   |
| <b>Court decision</b>             | Unknown                   |
| <b>Right to sell</b>              | Unknown                   |
| <b>O-Level</b>                    | Not located in flood area |

## Layout

**Toilets** 2

# FIERCE

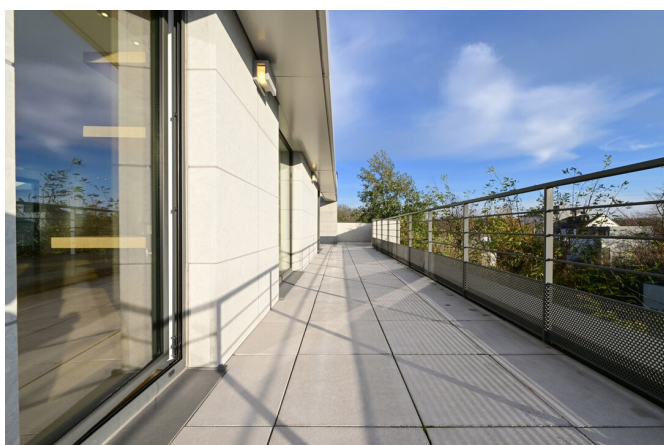
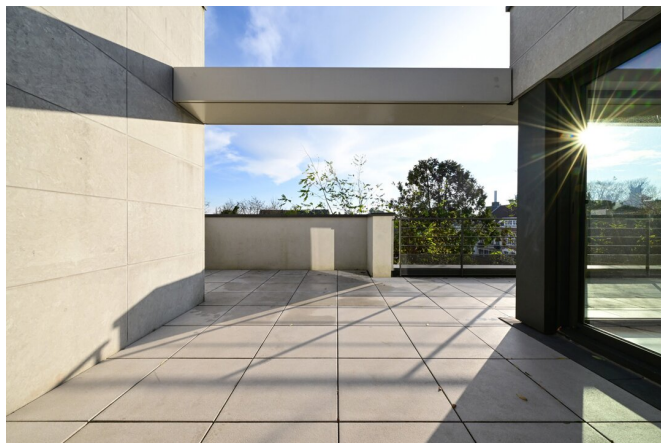
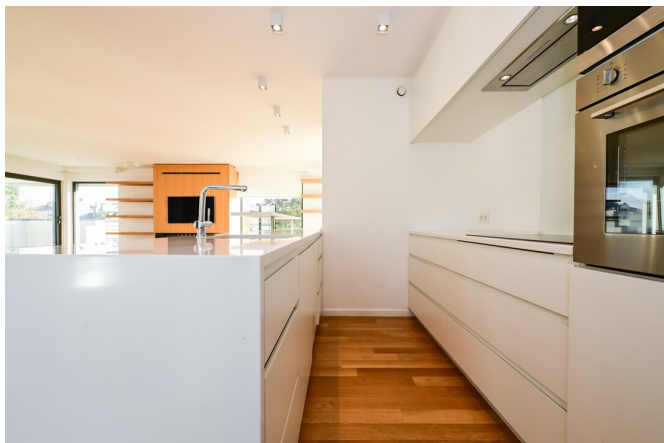
I M M O





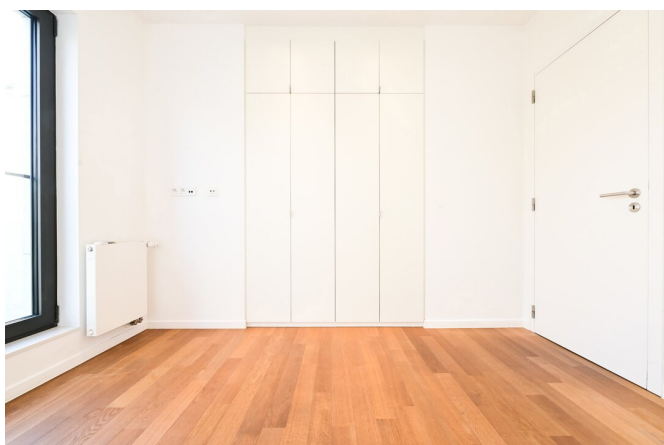
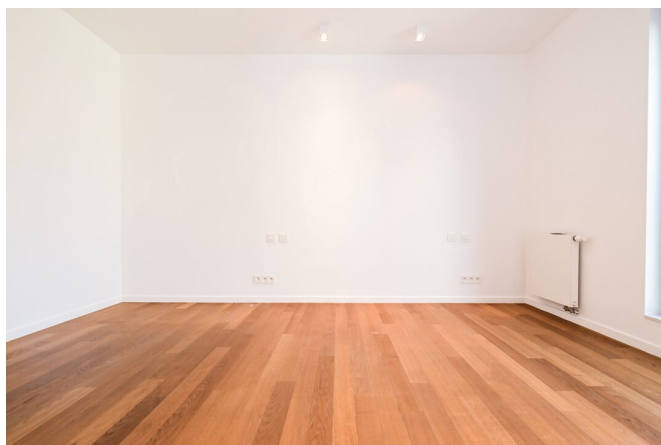
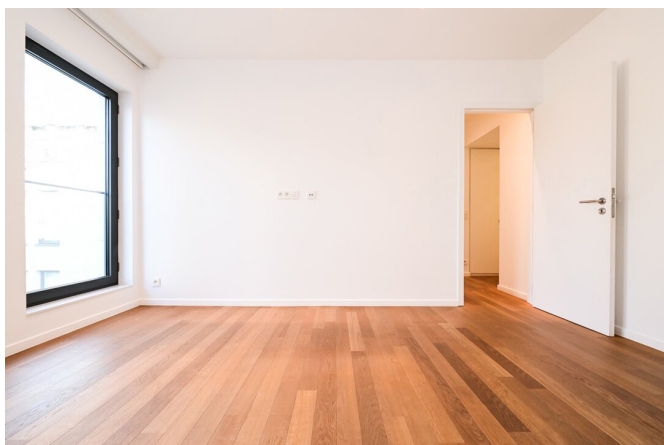
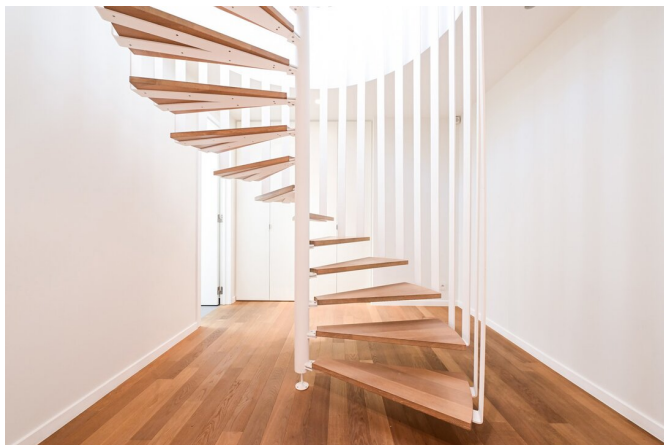
# FIERCE

I M M O



# FIERCE

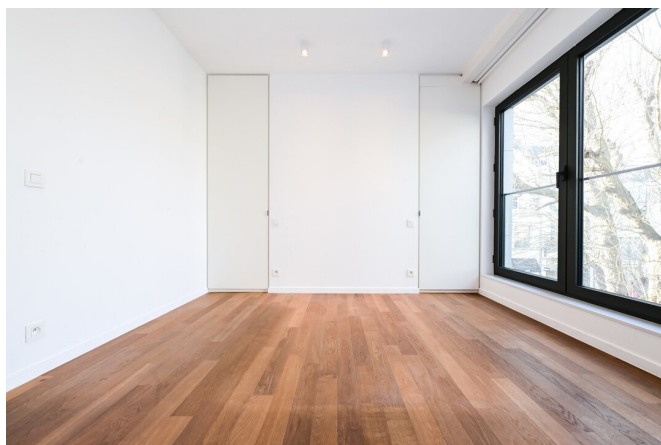
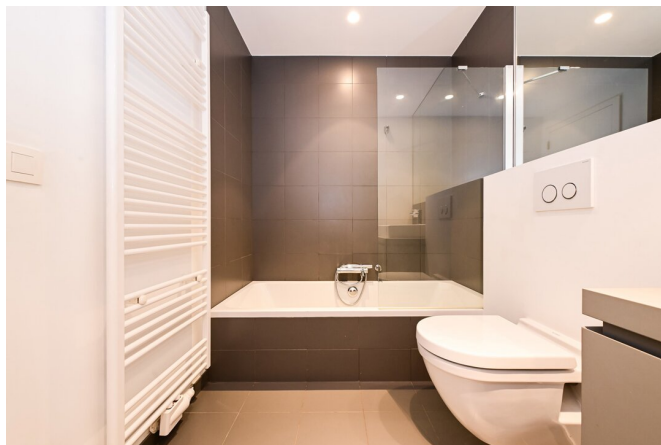
I M M O





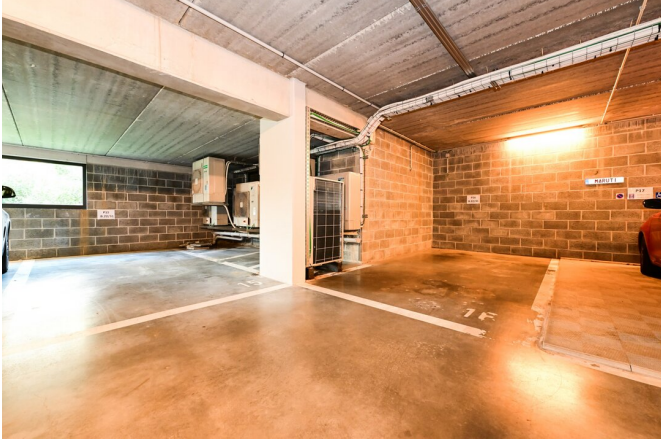
# FIERCE

I M M O



# FIERCE

I M M O





## Interested in this estate?

Contact us for more information

Fierce Immo

• T. 02 420 65 01

# FIERCE

I M M O