



PLEASANT 2BED DUPLEX + TERRACE

Martin Pfeifferstraat 20, 1080 Molenbeek-Saint-Jean

Reference	5638726
Price	€ 1.150
Ground surface	400m ²
Living surface	101m ²
Terrace surface	13m ²
Bedrooms	2
Bathrooms	1

Description

Just a stone's throw from the Karreveld castle, in a residential area of Molenbeek, discover our pleasant duplex apartment with 2 bedrooms and a double terrace.

Located on the fifth and top floor of a small condominium with lift, the property is composed as follows: Armoured door, spacious entrance hall with rear side fully equipped kitchen (oven, electric hob, hood, dishwasher, washing machine, fridge, freezer and boiler, access to the rear terrace, first bedroom of 17m² with also access to the rear terrace. On the rear side, bathroom with bath, separate WC, cupboard and second bedroom of 10m², bright dining/living room with access to the front terrace and upstairs you will discover a super cosy lounge with fireplace. Communal charges €150, individual electricity, water and gas meters. Cellar included.
CONTACT 0485 80 14 45 FOR INFO AND VISITS.

Essential info

Reference	5638726
Type	Flat
Ground surface	400m ²
Living surface	101m ²
Terrace surface	13m ²
Year of construction	1975
Availability	Tbd with the tenant
Elevator available	Yes

Required info

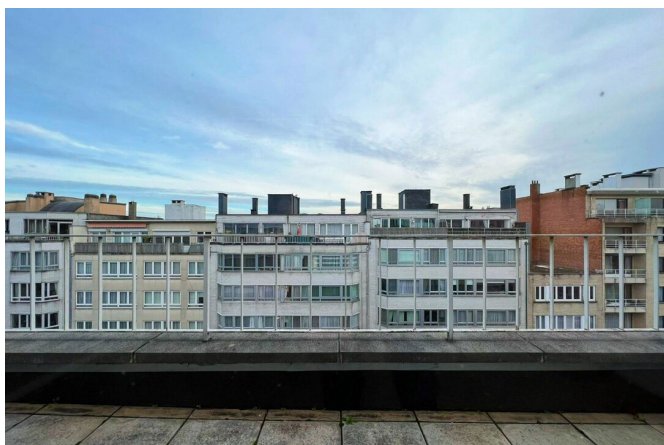
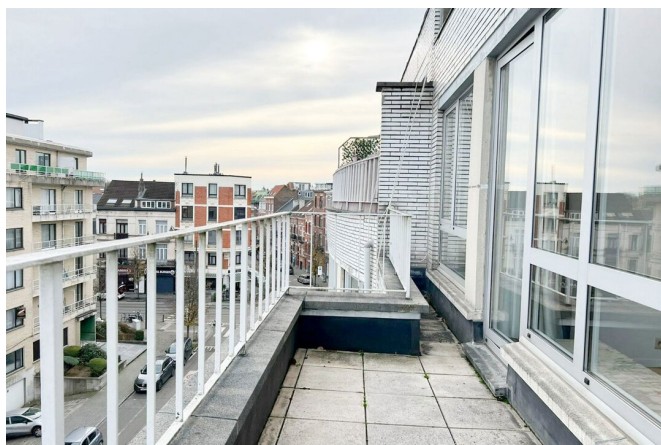
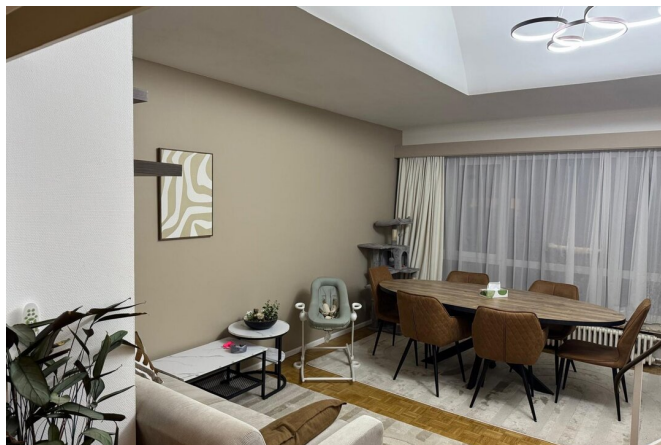
EPC Value	220
EPC Label	E
Urban planning destination	Unknown
Urban planning permit	Unknown
Subdivision permit	Unknown
Summons	Unknown
Court decision	Unknown
Right to sell	Unknown
O-Level	Not located in flood area

Layout

Toilets 1

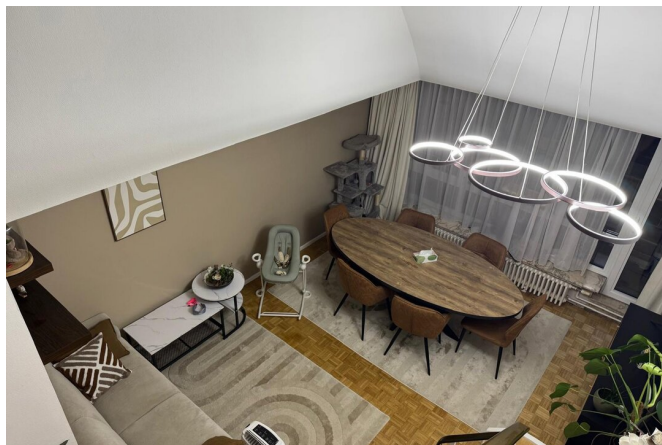
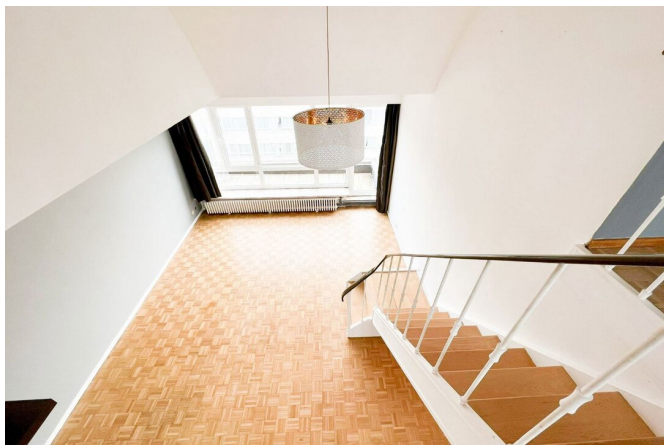
FIERCE

I M M O



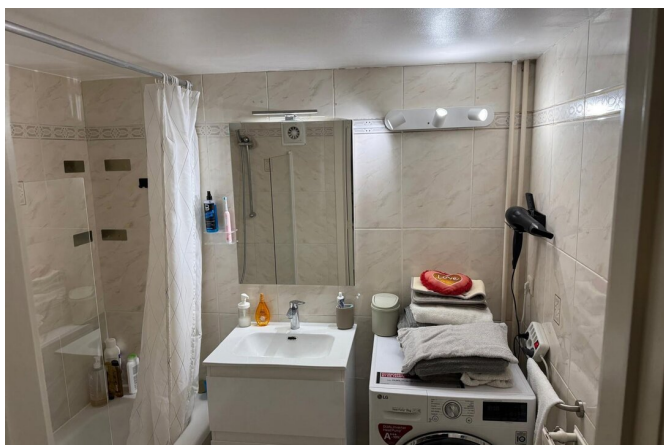
FIERCE

I M M O



FIERCE

I M M O



FIERCE

I M M O



Interested in this estate?

Contact us for more information



Florent Gossart

Founder | Sales | Rent - IPI 513.507

- T. +32 499 08 92 77
- E. info@fierceimmo.com

FIERCE

I M M O