



MAGNIFICENT GROUND FLOOR + GARDEN

Fridtjof Nansenstraat 26, 1070 Anderlecht

Reference	5518609
Price	€ 1.100
Ground surface	183m ²
Living surface	70m ²
Terrace surface	10m ²
Bedrooms	1
Bathrooms	1

Description

In the musicians' district, a stone's throw from Veeweyde metro station and 10 minutes by public transport from Erasme, discover this magnificent ground floor apartment with large garden.

Located on the ground floor of a small condominium, the property comprises an entrance hall leading at the rear to a pleasant living room with super-equipped open-plan kitchen, access to the beautiful garden, separate WC, utility room, front bedroom with shower room. Double glazing, PEB C, large cellar included. Must see!

Essential info

Reference	5518609
Type	Flat
Ground surface	183m ²
Living surface	70m ²
Terrace surface	10m ²
Garden surface	113m ²
Year of construction	1931
Availability	Immediately

Required info

EPC Value	147
EPC Label	C
Urban planning destination	Unknown
Urban planning permit	Unknown
Subdivision permit	Unknown
Summons	Unknown
Court decision	Unknown
Right to sell	Unknown
O-Level	Not located in flood area

Layout

Toilets 1

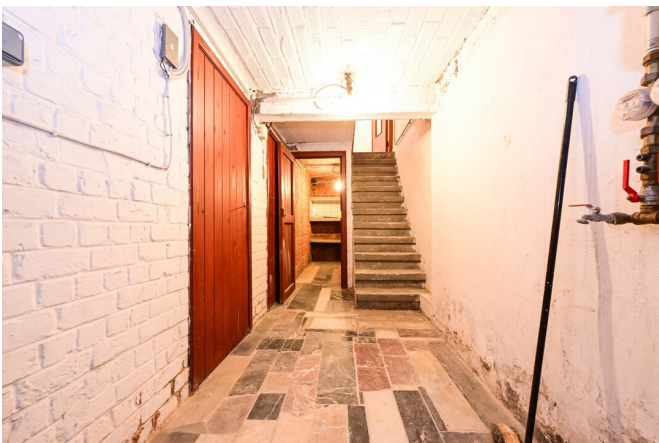
FIERCE

I M M O



FIERCE

I M M O



Interested in this estate?

Contact us for more information



Florent Gossart

Founder | Sales | Rent - IPI 513.507

- T. +32 499 08 92 77
- E. info@fierceimmo.com

FIERCE

I M M O