

FIERCE

I M M O



4-BEDROOM FAMILY HOUSE IN ETTERBEEK

avenue Charles Legrelle 3, 1040 Etterbeek

FIERCE

I M M O

Reference	7730197
Price	€ 3.650
Ground surface	120m ²
Living surface	332m ²
Terrace surface	25m ²
Bedrooms	4
Bathrooms	3
Garages	1

Description

Fierce Immo is proud to present this carefully renovated house of over 300 m², located in a sought-after neighbourhood of Etterbeek, within easy reach of public transport, schools, the European institutions and embassies.

It is made of: a large entrance hall with staircase, a spacious living area with an open-plan fireplace, a fully equipped open-plan kitchen, separate toilets, 4 bedrooms, an office, a bathroom, two shower rooms, and -the cherry on the cake- a large playroom in the attic.

The house also benefits from a large terrace, a utility room, a cellar and a garage.

Ideal for a family looking to settle into a new home for a few years. EPC rating E. No common charges.

FIERCE

I M M O

Essential info

Reference	7730197
Type	House
Ground surface	120m ²
Living surface	332m ²
Terrace surface	25m ²
Year of construction	1930
Year of renovation	2011
Availability	Tbd with the tenant

Required info

EPC Value	262
EPC Label	E
EPC Code	202305220000644907019
Urban planning destination	Living zone
Urban planning permit	Unknown
Subdivision permit	Unknown
Summons	Unknown
Court decision	Unknown
Right to sell	Unknown
O-Level	Not located in flood area

Layout

Toilets	3
Garages	1
Parking places	1

FIERCE

I M M O



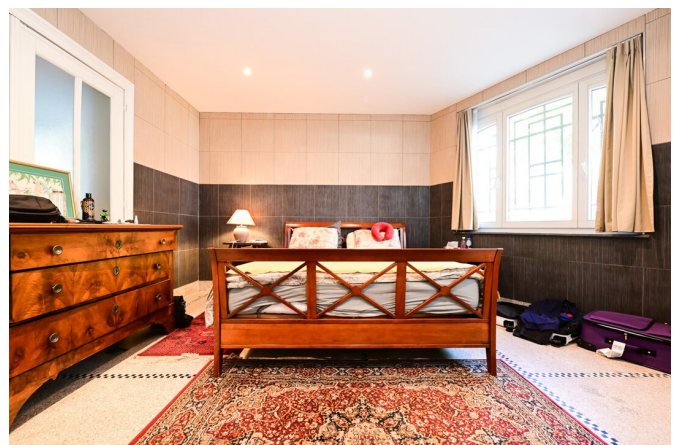
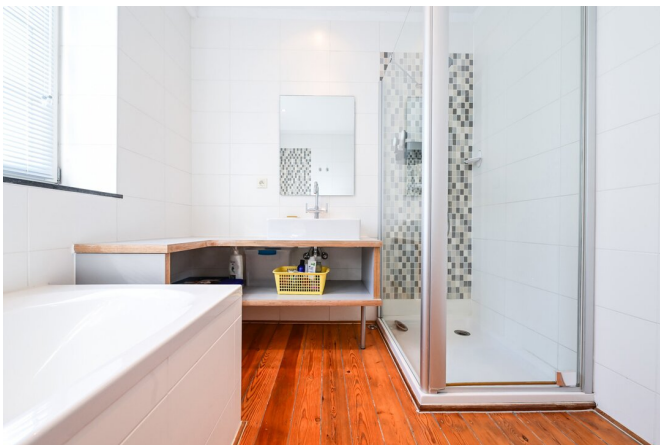
FIERCE

I M M O



FIERCE

I M M O



FIERCE

I M M O



FIERCE

I M M O

Interested in this estate?

Contact us for more information



Michaël Baert

Responsible New constructions - IPI 512.639

- T. +32 472 46 93 44
- E. michael@fierceimmo.com

FIERCE

I M M O