

FIERCE

I M M O



STUNNING HORECA BUSINESS AT PLACE DU MIRROIR

Chaussée de Jette 604, 1090 Jette

Reference	7759339
Price	€ 3.500
Ground surface	250m ²
Living surface	120m ²

FIERCE

I M M O

Description

Just steps from Place du Miroir, discover this magnificent 120 m² commercial space—featuring HORECA (food & beverage) authorization and a large 100 m² garden—ready for a refresh!

Ideally located, this property with a large storefront is adaptable to any type of project.

Renovation work is required to tailor the space to your specific needs.

Available immediately!

A rare opportunity.

Essential info

Reference	7759339
Type	Commercial
Ground surface	250m ²
Living surface	120m ²
Year of construction	1950
Availability	Immediately

Required info

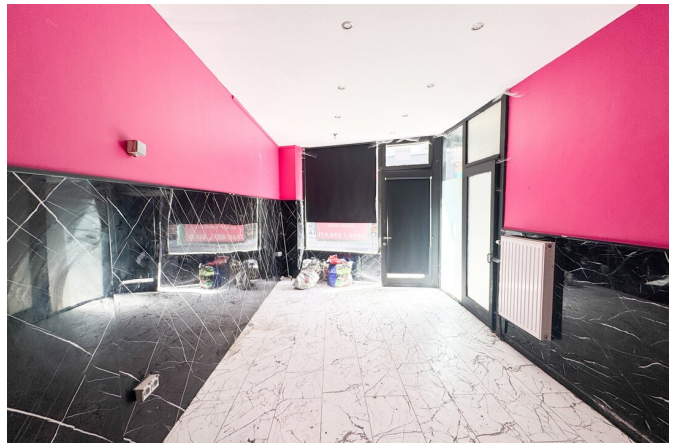
Urban planning destination	Unknown
Urban planning permit	Unknown
Subdivision permit	Unknown
Summons	Unknown
Court decision	Unknown
Right to sell	Unknown
O-Level	Not located in flood area

Layout

Toilets 1

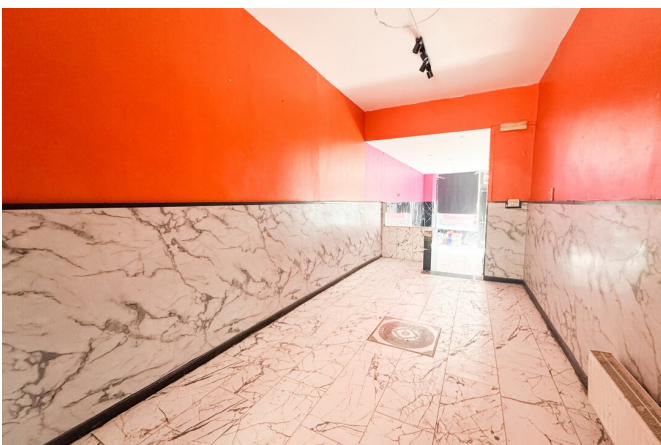
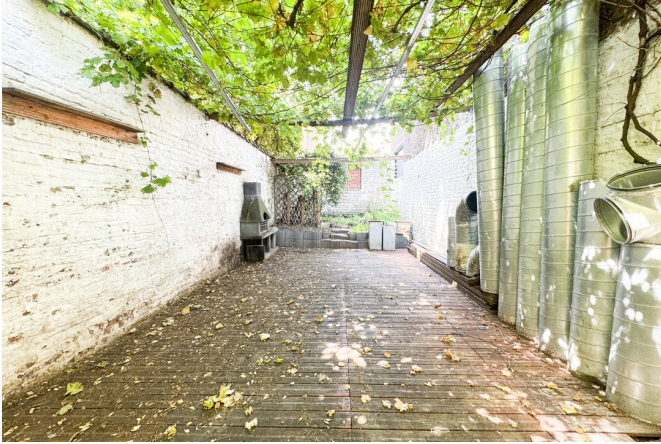
FIERCE

I M M O



FIERCE

I M M O



FIERCE

I M M O



FIERCE

I M M O

Interested in this estate?

Contact us for more information



Noah Todaro

Real estate advisor - IPI 800.066

- T. +32 492 40 78 05
- E. noah@fierceimmo.com

FIERCE

I M M O