

FIERCE

I M M O



STUNNING RENOVATED RETAIL SPACE IN CHATELAIN!!!

Rue de l'Aqueduc Waterleidingsstraat 77, 1050 Elsene

Reference	7759377
Price	€ 2.190
Ground surface	220m ²
Living surface	95m ²

FIERCE

I M M O

Description

Just steps away from Place du Châtelain and Rue du Bailli, discover this magnificent, fully renovated 95 m² commercial space!

It features a very large shop window suitable for any type of business concept.

The property has undergone renovation work.

Business for sale (leasehold/goodwill).

Available immediately!

Essential info

Reference	7759377
Type	Commercial
Ground surface	220m ²
Living surface	95m ²
Year of construction	1952
Availability	Immediately

Required info

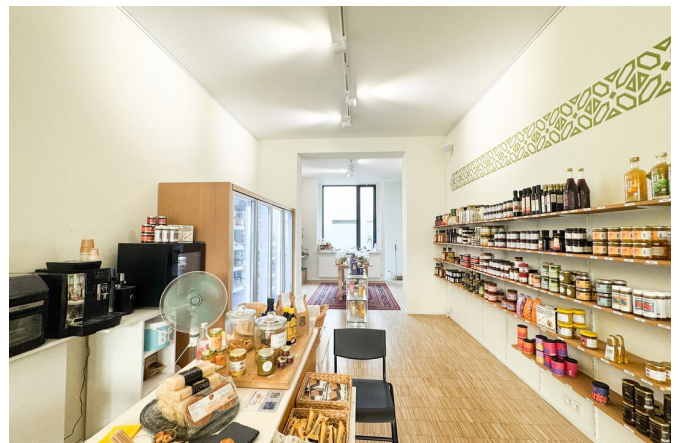
Urban planning destination	Unknown
Urban planning permit	Unknown
Subdivision permit	Unknown
Summons	Unknown
Court decision	Unknown
Right to sell	Unknown
O-Level	Not located in flood area

Layout

Toilets 1

FIERCE

I M M O



FIERCE

I M M O



FIERCE

I M M O



FIERCE

I M M O

Interested in this estate?

Contact us for more information



Noah Todaro

Real estate advisor - IPI 800.066

- T. +32 492 40 78 05
- E. noah@fierceimmo.com

FIERCE

I M M O