



Mansion for investors - coliving spaces

Square Léopold 27, 1020 Laeken

FIERCE

I M M O

Reference	COLOCATION SQUARE LEOPOLD
Price	€ 900.000
Ground surface	723m ²
Living surface	285m ²
Terrace surface	18m ²
Bedrooms	9
Bathrooms	7

Description

Are you an investor looking for a good return (4.5% NET), without having to worry about anything? Fierce Immo is proud to present this exclusive Mansion, built at the beginning of the 20th century and converted into a coliving space. It extends over 4 floors and a surface area of 285 sqm. The ground floor is dedicated to the common spaces: a fully-equipped kitchen, a spacious, bright living and dining room for the comfort of the tenants. The rest of the house is made up of 9 bedrooms, all of them very pleasant, spacious and bright, and most of them with individual showers. Upstairs, you'll find a coworking space for your hardest-working tenants! In the basement, you'll find two further rooms for conversion (relaxation area) and a laundry room with two washing machines and a tumble dryer. The icing on the cake is the unoverlooked, west-facing garden, which is the jewel in this house's crown. In the peace and quiet of a residential area, your tenants will have easy access to the city centre via the nearby public transport network (Metro 6, Tram 19, bus, etc.). Would you like a presentation of this investment opportunity? Call us today on 02 / 420 65 01.

FIERCE

I M M O

Essential info

Reference	COLOCATION SQUARE LEOPOLD
Type	House
Ground surface	723m ²
Living surface	285m ²
Terrace surface	18m ²
Garden surface	105m ²
Year of construction	1912
Year of renovation	2022
Availability	Immediately

Required info

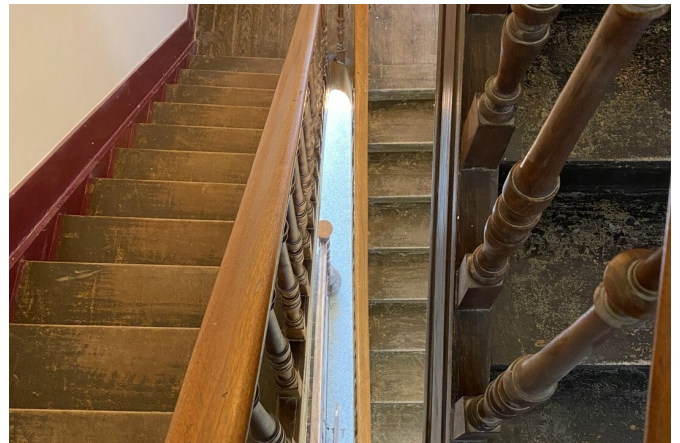
EPC Value	518
EPC Label	G
EPC Code	202104290000587847018
Urban planning destination	Unknown
Urban planning permit	Yes
Subdivision permit	Yes
Summons	No
Court decision	Unknown
Right to sell	Unknown
O-Level	Not communicated

Layout

Toilets 5

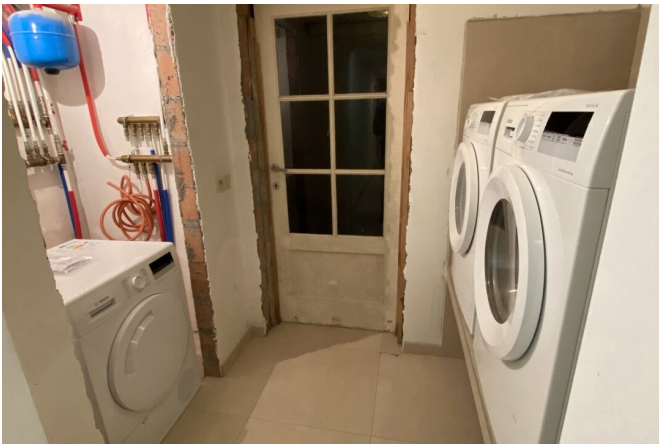
FIERCE

I M M O



FIERCE

I M M O



FIERCE

I M M O



Interested in this estate?

Contact us for more information



Michaël Baert

Responsible New constructions - IPI 512.639

- T. +32 472 46 93 44
- E. michael@fierceimmo.com

FIERCE

I M M O