

FIERCE

I M M O



Investment property for experienced investors

FIERCE

I M M O

Reference	5587791
Price	€ 1.250.000
Ground surface	340m ²
Living surface	360m ²
Terrace surface	40m ²
Bedrooms	13
Bathrooms	7

FIERCE

I M M O

Description

Are you an investor looking for a good return (6.6% NET), without having to worry about anything? Fierce Immo is proud to present this exclusive investment property, which has been converted into a coliving space. It extends over 4 floors, with a surface area of 360 sqm. A real nugget for you as an investor, and for your tenants, young workers!

The house is made up as follows: on the ground floor, a superbly equipped kitchen, a dining room, a small and a large bright living room overlooking the garden. The garden is quiet and out of sight. The perfect place for your tenants' Thursday aperitifs! The first to third floors have thirteen spacious, light-filled bedrooms, plus two bathrooms, a shower room and two separate toilets. One of the bedrooms on the 2nd floor also has a private terrace.

It will take you less than 10 minutes on foot to get to the Botanique stop where metros 2 and 6 and trams 92 and 93 are located. Around the corner is bus number 62, which will take you directly to Brussels North station.

Need some fresh air? The house is a stone's throw from Square Armand Steurs and Parc Josaphat.

Would you like a presentation of this investment opportunity? Call us now on 02 / 420 65 01.

Essential info

Reference	5587791
Type	House
Ground surface	340m ²
Living surface	360m ²
Terrace surface	40m ²
Garden surface	120m ²
Year of construction	1956
Year of renovation	2021
Availability	Immediately

Required info

EPC Value	334-334
EPC Label	F
EPC Code	2021110200005986220114
Urban planning destination	Unknown
Urban planning permit	Unknown
Subdivision permit	Unknown
Summons	Unknown
Court decision	Unknown
Right to sell	Unknown
O-Level	Not located in flood area

FIERCE

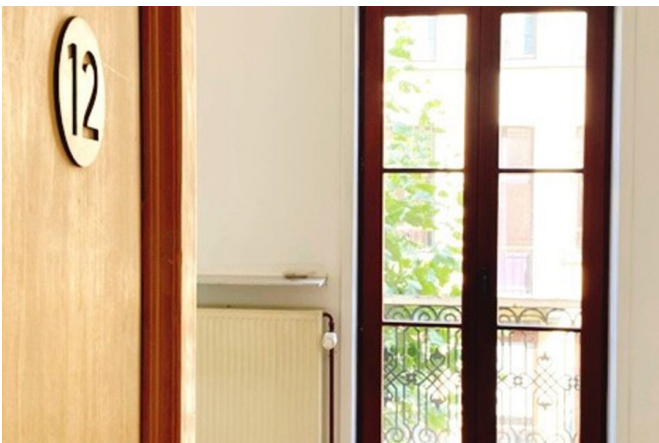
I M M O

Layout

Toilets 5

FIERCE

I M M O



FIERCE

I M M O



FIERCE

I M M O

Interested in this estate?

Contact us for more information



Michaël Baert

Responsible New constructions - IPI 512.639

- T. +32 472 46 93 44
- E. michael@fierceimmo.com

FIERCE

I M M O