



## EXCEPTIONAL FURNISHED PENTHOUSE 4 BED, 4 BATH, TERRACE + P

Avenue Yorkshire 22, 1200 Woluwe-Saint-Lambert

# FIERCE

I M M O

<b>Reference</b>	6261334
<b>Price</b>	€ 1.090.000
<b>Ground surface</b>	5300m <sup>2</sup>
<b>Living surface</b>	215m <sup>2</sup>
<b>Terrace surface</b>	45m <sup>2</sup>
<b>Bedrooms</b>	4
<b>Bathrooms</b>	4
<b>Garages</b>	1

## Description

Ideally located in a sought-after area, this penthouse benefits from easy access to urban amenities, restaurants, shops and surrounding green spaces.

this magnificent luxury penthouse, offering an elegant and refined lifestyle in one of the most desirable areas of the city. With its 215m<sup>2</sup> spread over two floors and an exceptional terrace, this penthouse embodies the height of comfort and privilege.

This penthouse is arranged on two levels, offering a harmonious separation between living areas and private areas.

With a spacious and sunny terrace, offering breathtaking views of the surrounding area and the urban skyline.

The bright and spacious living room, tastefully furnished and with large bay windows, providing an ideal setting for relaxing or hosting receptions.

A fully equipped kitchen with high-end appliances, ideal for preparing delicious meals while enjoying the views from the adjacent terrace.

Four elegant bedrooms, each lovingly furnished and with its own bathroom.

This penthouse is furnished with attention to detail and a strong aesthetic sense, creating an atmosphere of luxury and comfort.

Available for furnished rental, this penthouse offers the opportunity to settle in immediately and enjoy a high-end lifestyle.

Don't miss this unique opportunity to live in an exceptional penthouse, combining luxury, comfort and an urban lifestyle.

Contact us now on 02 420 65 01 to arrange a visit.

# FIERCE

I M M O

## Essential info

<b>Reference</b>	6261334
<b>Type</b>	Flat
<b>Ground surface</b>	5300m <sup>2</sup>
<b>Living surface</b>	215m <sup>2</sup>
<b>Terrace surface</b>	45m <sup>2</sup>
<b>Year of construction</b>	2017
<b>Availability</b>	Immediately
<b>Elevator available</b>	Yes

## Required info

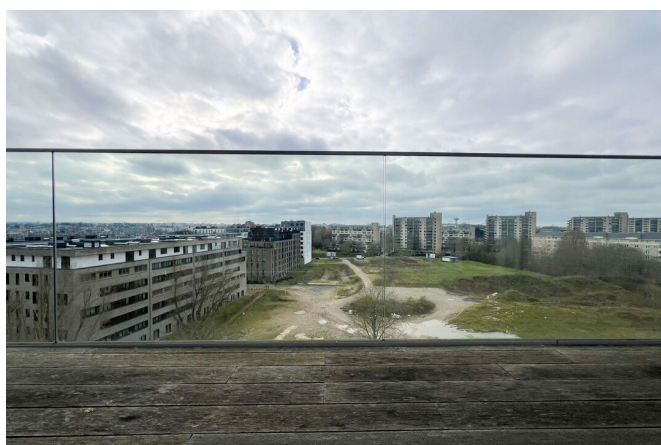
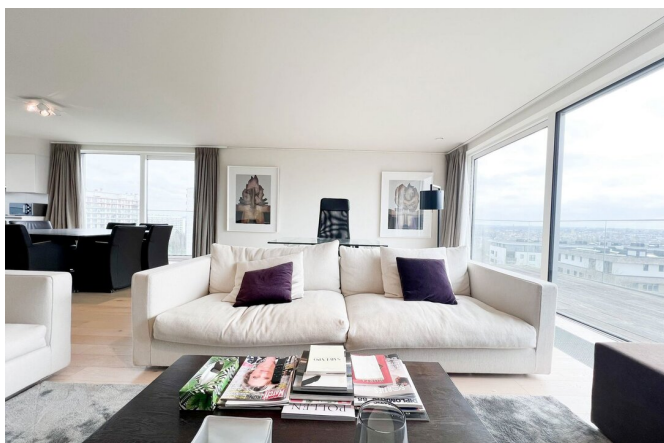
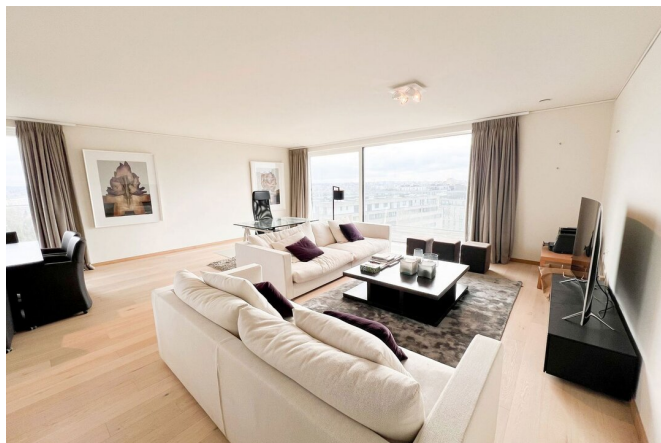
<b>EPC Value</b>	96
<b>EPC Label</b>	C
<b>Urban planning destination</b>	Unknown
<b>Urban planning permit</b>	Unknown
<b>Subdivision permit</b>	Unknown
<b>Summons</b>	Unknown
<b>Court decision</b>	Unknown
<b>Right to sell</b>	Unknown
<b>O-Level</b>	Not located in flood area

## Layout

<b>Toilets</b>	2
<b>Garages</b>	1
<b>Parking places</b>	1

# FIERCE

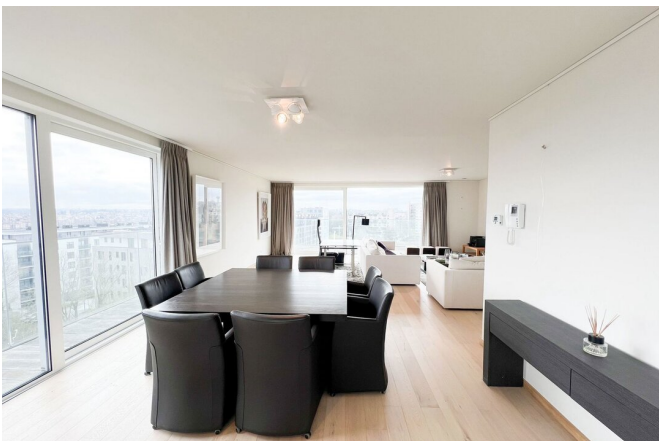
I M M O





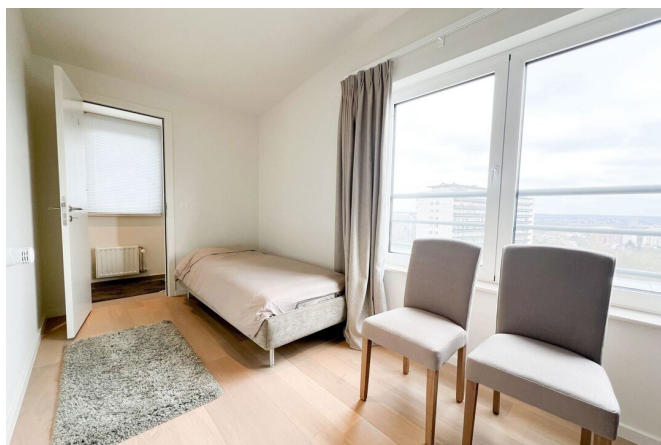
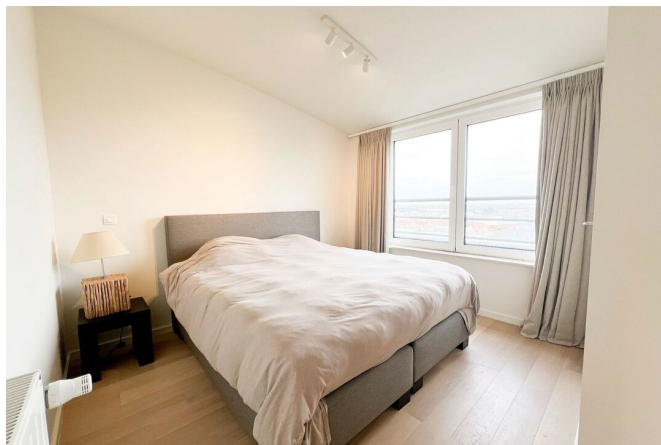
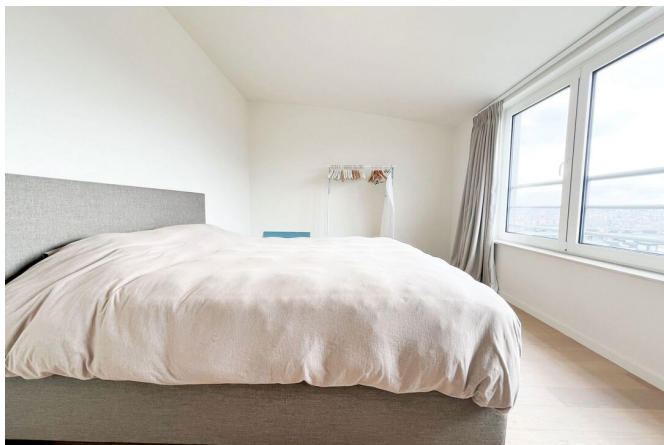
# FIERCE

I M M O



# FIERCE

I M M O





# FIERCE

I M M O



## Interested in this estate?

Contact us for more information



### Noah Todaro

Conseiller immobilier | Ventes | Locations - IPI  
800.066

- T. +32 492 40 78 05
- E. [noah@fierceimmo.com](mailto:noah@fierceimmo.com)



# FIERCE

I M M O