



GROUND FLOOR COMMERCIAL SPACE + PARKING

Avenue de la Couronne 43, 1050 Ixelles

Reference	6501941
Price	€ 299.000
Ground surface	1366m ²
Living surface	169m ²
Garages	1

Description

On the prestigious Avenue de la Couronne, one of Brussels' main thoroughfares, discover our superb commercial ground floor offering a beautiful storefront and over 169 m² of space to be customized according to your needs, three parking spaces, and two parking boxes in a secure underground garage.

Currently operating as a driving school, the property is laid out as follows: a beautiful storefront of ± 10 meters in length, an entrance hall, a reception area, customer welcome area, and an office at the rear, as well as a second separate office by the storefront. A large 35 m² room set up as a classroom (formerly used as a vault), a 10 m² office, a meeting room with kitchenette, and a separate WC.

Customizable according to your needs (formerly arranged by a bank, the property still has a vault room and high-security features).

Three parking spaces available as an option at €25,000 each and two parking boxes available as an option at €35,000 each.

A must-see!

FIERCE

I M M O

Essential info

Reference	6501941
Type	Commercial
Ground surface	1366m ²
Living surface	169m ²
Year of construction	16970
Availability	At the contract
Elevator available	Yes

Required info

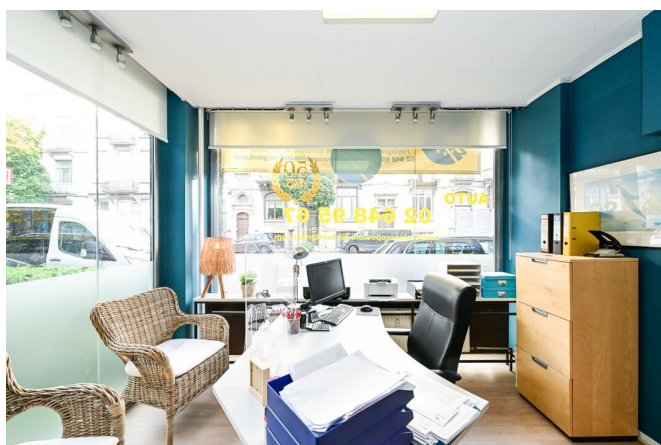
Urban planning destination	Unknown
Urban planning permit	No
Subdivision permit	No
Summons	No
Court decision	Unknown
Right to sell	Unknown
O-Level	Not located in flood area

Layout

Toilets	1
Garages	1
Parking places	1

FIERCE

I M M O



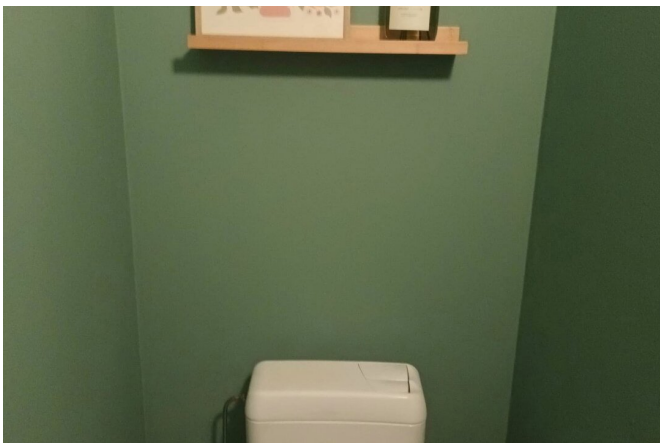
FIERCE

I M M O



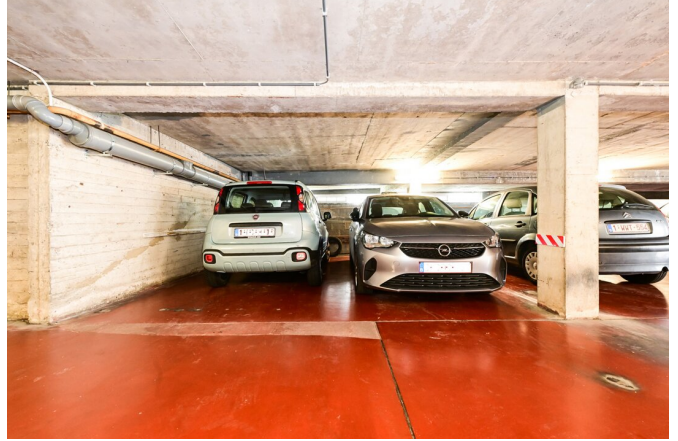
FIERCE

I M M O



FIERCE

I M M O



Interested in this estate?

Contact us for more information



Florent Gossart

Founder | Sales | Rent - IPI 513.507

- T. +32 499 08 92 77
- E. info@fierceimmo.com

FIERCE

I M M O