



MAGNIFICENT PENTHOUSE 5 BEDROOMS - 2 BATHROOMS - TERRACE

Vanderlindenstraat 36 6, 1030 Schaerbeek

FIERCE

I M M O

Reference	6546858
Price	€ 450.000
Ground surface	390m ²
Living surface	165m ²
Terrace surface	14m ²
Bedrooms	5
Bathrooms	2

Description

In the heart of Schaerbeek, in the Collignon district, discover this magnificent penthouse offering the potential for 5 bedrooms + terrace, located in a charming rear building in a quiet inner courtyard, benefiting from the tranquility of the area.

This rare and beautiful property consists of the following:

An entrance hall leading to the spacious, bright living room with access to the beautiful covered terrace of 14 m², facing WEST, overlooking the peaceful inner courtyard. The American kitchen, to be chosen custom-made (budget of €10,000 included in the price), a hallway leading to two large bedrooms of 19 m², a bathroom with bathtub and WC, a master bedroom (16 m²) with en-suite bathroom and WC, a storage room, a separate WC, and additional storage space.

It is possible to add two partition walls to transform this magnificent three-bedroom apartment into a five-bedroom home, at the seller's expense.

The property has lots of charm, with original exposed beams and numerous new skylights that provide an abundance of natural light. The roof has been replaced and insulated, EPC D, individual meters.

A property that is definitely worth visiting!!

Essential info

Reference	6546858
Type	Flat
Ground surface	390m ²
Living surface	165m ²
Terrace surface	14m ²
Year of construction	1931
Year of renovation	2025
Availability	At the contract

Required info

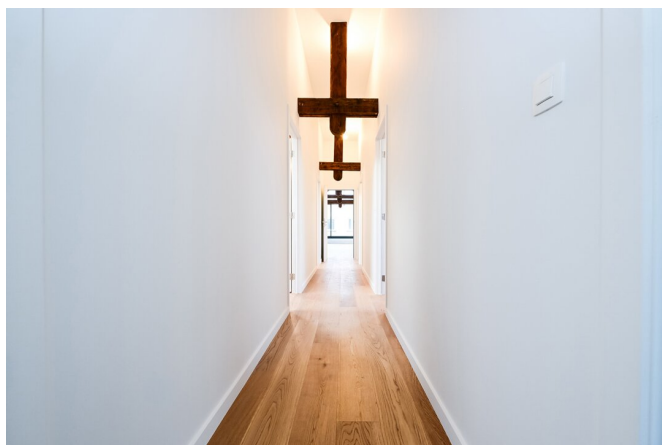
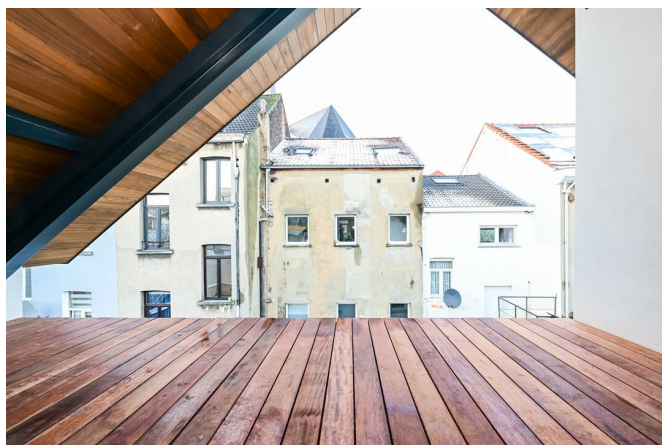
EPC Value	208
EPC Label	D
Urban planning destination	Unknown
Urban planning permit	No
Subdivision permit	No
Summons	No
Court decision	Unknown
Right to sell	Unknown
O-Level	Not located in flood area

Layout

Toilets 3

FIERCE

I M M O



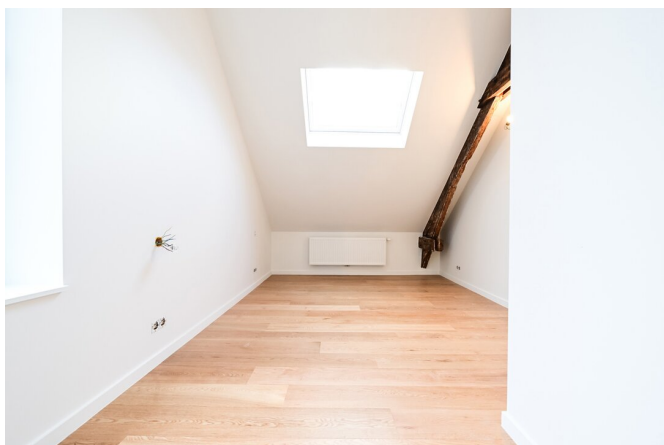
FIERCE

I M M O



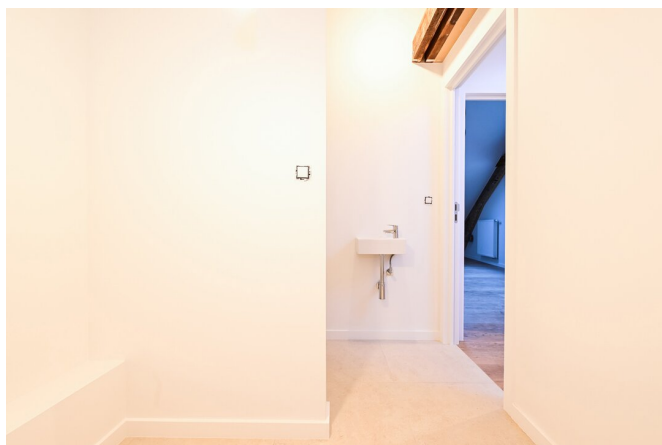
FIERCE

I M M O



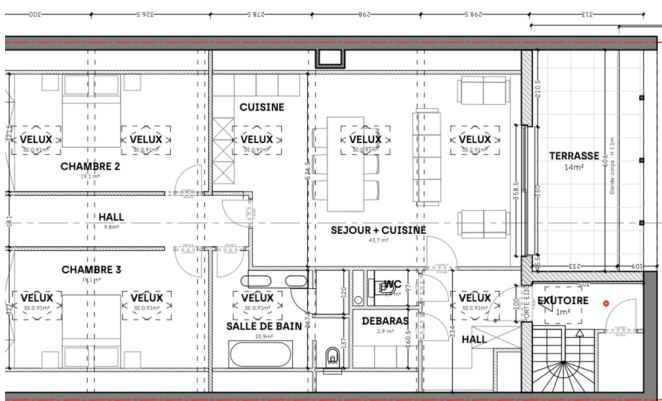
FIERCE

I M M O



FIERCE

I M M O



Interested in this estate?

Contact us for more information



Michaël Baert

Responsible New constructions - IPI 512.639

- T. +32 472 46 93 44
- E. michael@fierceimmo.com

FIERCE

I M M O