



## 4 new low-energy houses 100% customisable

Kasterlinden 1, 1082 Berchem-Sainte-Agathe

# FIERCE

I M M O

<b>Reference</b>	5828715
<b>Price</b>	€ 788.000
<b>Ground surface</b>	245m <sup>2</sup>
<b>Living surface</b>	228m <sup>2</sup>
<b>Terrace surface</b>	54m <sup>2</sup>
<b>Bedrooms</b>	4
<b>Bathrooms</b>	2
<b>Garages</b>	1

## Description

Do you dream of a completely customizable home that combines comfort, quality of life and sustainable development? Fierce Immo is proud to present its new "turnkey" real estate project of four single-family houses with 2 and 3 facades, between town and country.

The Kasterlinden project, located in the street of the same name, is close to the center of Berchem-Sainte-Agathe, a small, green and quiet commune in Brussels. Schools, restaurants and shops are just a few minutes' walk away, allowing you to take full advantage of this idyllic setting.

The Kasterlinden project consists of four low-energy houses built in solid wood with top-quality facing bricks. The 230 sqm. of living space is spread over 4 levels, including 4 (large) bedrooms, 2 bathrooms, an office area, a garage, a large living room with super-equipped kitchen (optional), two large terraces and a large garden directly overlooking the Hoogveld.

Double-glazed aluminum frames. High-quality finishes. Underfloor heating. Solar panels (optional). PEB A+.

Registration fees and VAT. For more information, call us on 02 420 65 01 for a project presentation in our agency avenue Louise.

## Essential info

<b>Reference</b>	5828715
<b>Type</b>	House
<b>Ground surface</b>	245m <sup>2</sup>
<b>Living surface</b>	228m <sup>2</sup>
<b>Terrace surface</b>	54m <sup>2</sup>
<b>Garden surface</b>	100m <sup>2</sup>
<b>Year of construction</b>	2024
<b>Availability</b>	At delivery

## Required info

<b>EPC Value</b>	40
<b>EPC Label</b>	A
<b>Urban planning destination</b>	Living zone
<b>Urban planning permit</b>	Yes
<b>Subdivision permit</b>	Yes
<b>Summons</b>	No
<b>Court decision</b>	Unknown
<b>Right to sell</b>	No
<b>O-Level</b>	Not located in flood area

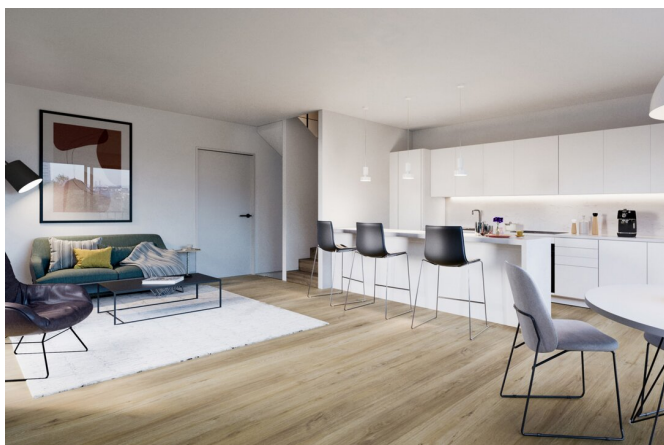
## Layout

<b>Toilets</b>	2
<b>Garages</b>	1
<b>Parking places</b>	1



# FIERCE

I M M O





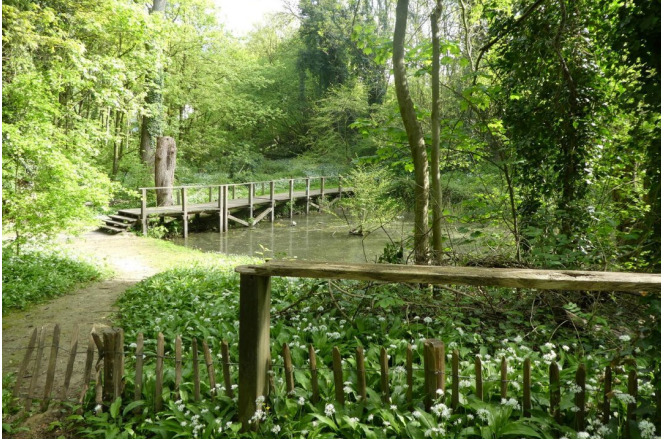
# FIERCE

I M M O



# FIERCE

I M M O



## Interested in this estate?

Contact us for more information



### Michaël Baert

Responsible New constructions - IPI 512.639

- T. +32 472 46 93 44
- E. [michael@fierceimmo.com](mailto:michael@fierceimmo.com)

# FIERCE

I M M O