



SPORTS EQUIPMENT WAREHOUSE WITH MEZZANINE

Rue du Corbeau 95, 1030 Schaerbeek

Reference

6632407

Price

€ 65.000

Living surface

65m²

Description

Ideally located in a quiet area of Schaerbeek (on the border with EVERE), discover our warehouse offering more than 85m² with a mezzanine. The warehouse has been completely insulated at the walls and has a new roof, new screed and a new electrical installation. The warehouse is located at the back of a small condominium with access via the common hallway. Ideal for contractor or storage. Dimensions: 5.14m wide by 6.3m deep, i.e. 32.5m² per tray. Ceiling height 2.93m. To visit !!

Essential info

Reference	6632407
Type	Commercial
Living surface	65m ²
Year of construction	1950
Year of renovation	2020
Availability	At the contract

Required info

Urban planning destination	Unknown
Urban planning permit	No
Subdivision permit	No
Summons	No
Court decision	Unknown
Right to sell	Unknown
O-Level	Not located in flood area

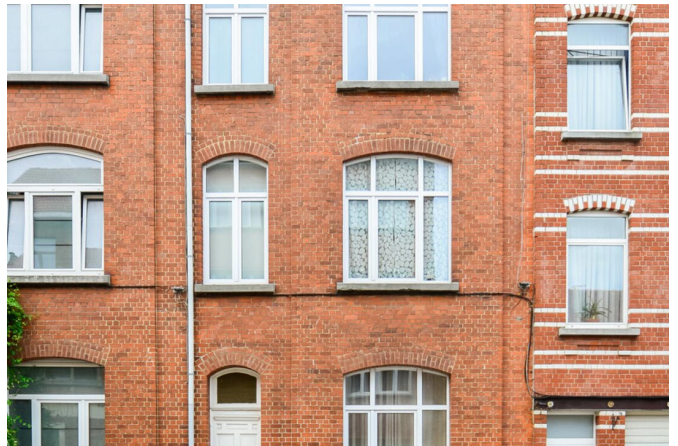
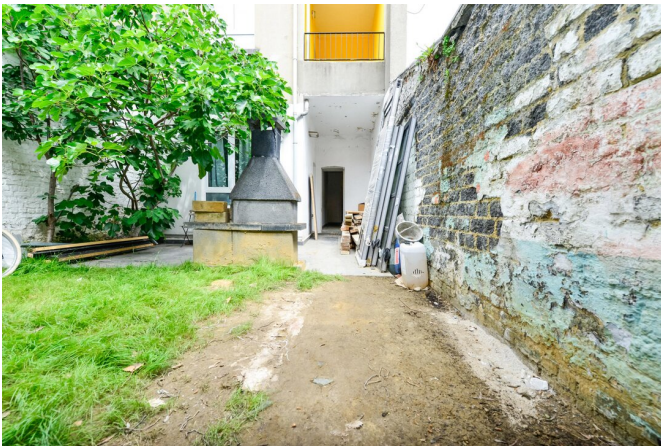
FIERCE

I M M O



FIERCE

I M M O



Interested in this estate?

Contact us for more information



Florent Gossart

Founder | Sales | Rent - IPI 513.507

- T. +32 499 08 92 77
- E. info@fierceimmo.com

FIERCE

I M M O