



Botanique 47 - magnificent penthouse, exceptional renovation

chaussée de Haecht 47, 1210 Saint-Josse-ten-Noode

| | |
|------------------------|-------------------|
| Reference | 6626144 |
| Price | € 575.000 |
| Ground surface | 324m ² |
| Living surface | 94m ² |
| Terrace surface | 23m ² |
| Bedrooms | 2 |
| Bathrooms | 2 |

Description

Fierce Immo is proud to offer this magnificent 94 sqm. penthouse with 23 sqm. terrace, located in a completely renovated Brussels Mansion.

The property comprises an entrance hall with checkroom and separate toilet, a beautiful living area with access to the terrace inside the island, a superbly equipped kitchen, 2 bedrooms, one with dressing room, 2 shower rooms. Cellar.

The apartment offers all modern comforts: air conditioning, solar panels, double flow system, heat pump, triple glazing, etc. Exceptional finishes: built-in cupboards, oak flooring, etc.! PEB B. Available immediately. For further information, please contact us on 02 / 420 65 01.

Essential info

| | |
|-----------------------------|-------------------|
| Reference | 6626144 |
| Type | Flat |
| Ground surface | 324m ² |
| Living surface | 94m ² |
| Terrace surface | 23m ² |
| Year of construction | 1920 |
| Year of renovation | 2024 |
| Availability | At the contract |

Required info

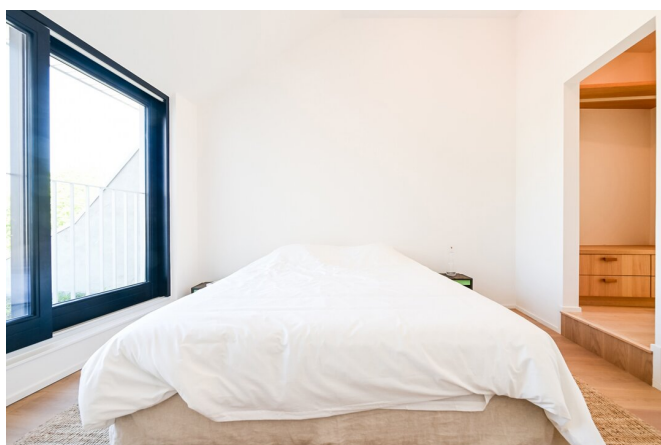
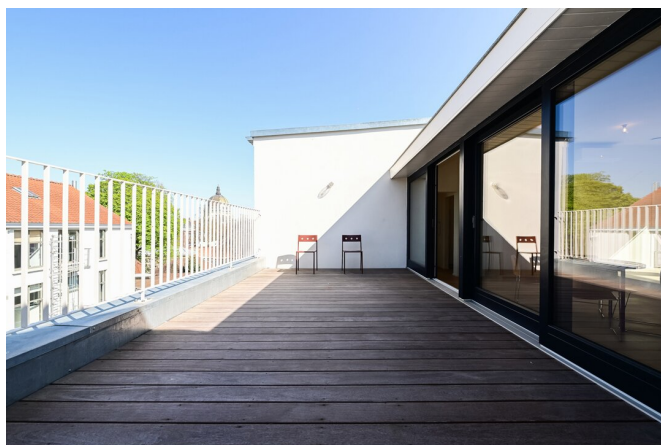
| | |
|-----------------------------------|---------------------------|
| EPC Value | 84 |
| EPC Label | B |
| Urban planning destination | Living zone |
| Urban planning permit | Yes |
| Subdivision permit | Yes |
| Summons | No |
| Court decision | No |
| Right to sell | No |
| O-Level | Not located in flood area |

Layout

Toilets 1

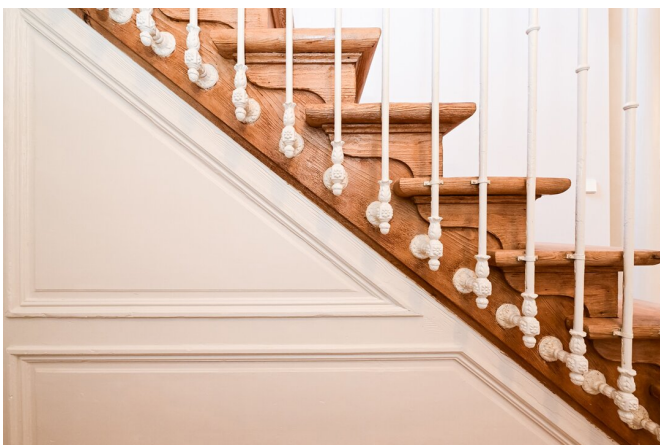
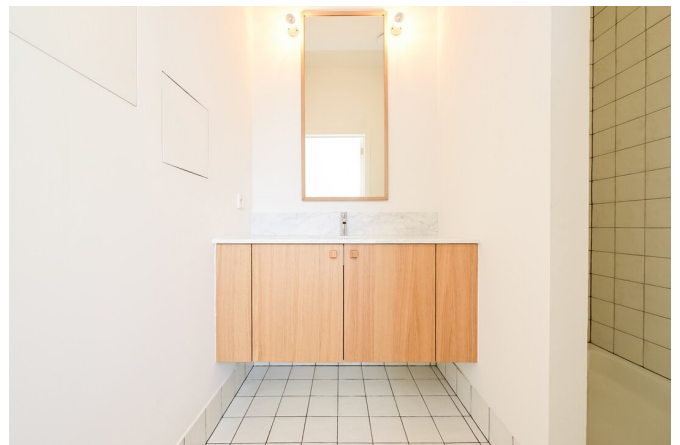
FIERCE

I M M O



FIERCE

I M M O



FIERCE

I M M O



Interested in this estate?

Contact us for more information



Michaël Baert

Responsible New constructions - IPI 512.639

- T. +32 472 46 93 44
- E. michael@fierceimmo.com

FIERCE

I M M O