



SHELL COMMERCIAL SPACE + REAR HOUSE

Rue de Linthout 11, 1040 Etterbeek

Reference	6679708
Price	€ 219.000
Ground surface	100m ²
Living surface	135m ²

Description

In the heart of the European Quarter and just steps away from the Cinquantenaire, discover this commercial ground floor with a rear house (currently converted into a living space). It consists of the following: a large commercial display window facing the street, a main room of 55 m² SHELL; a private courtyard of 15 m²; a rear house of 77 m², comprising a living room with open kitchen, bathroom, separate WC, and a first bedroom plus an office on the 2nd floor.

A cellar is also available, the meters are individual, and the gas boiler is brand new (Junkers brand). There is also the possibility of a laundry area in the basement.

A MUST-SEE!!

Essential info

Reference	6679708
Type	Commercial
Ground surface	100m ²
Living surface	135m ²
Year of construction	1911
Availability	At the contract

Required info

Urban planning destination	Unknown
Urban planning permit	Unknown
Subdivision permit	Unknown
Summons	Unknown
Court decision	Unknown
Right to sell	Unknown
O-Level	Not located in flood area

Layout

Toilets 1

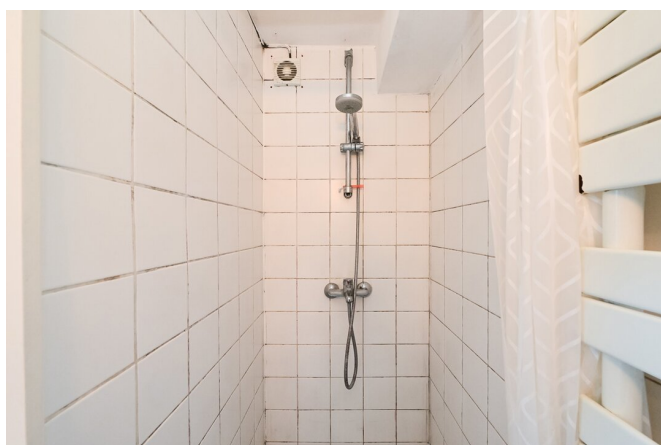
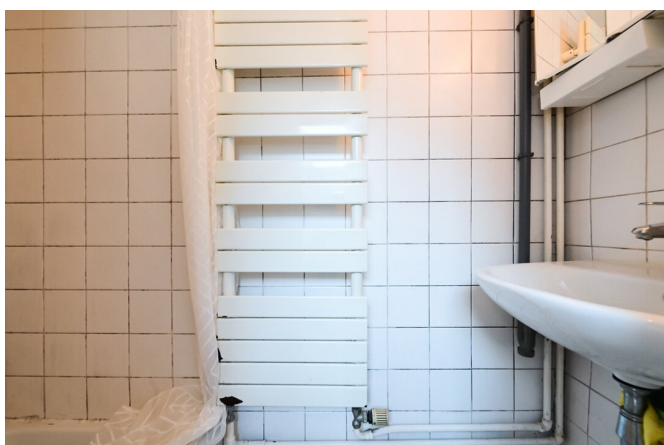
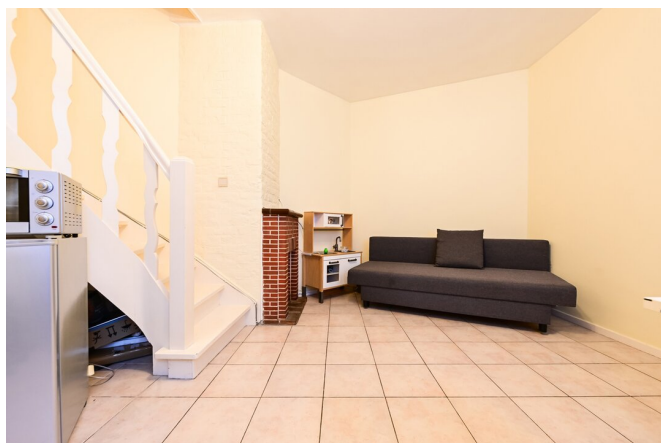
FIERCE

I M M O



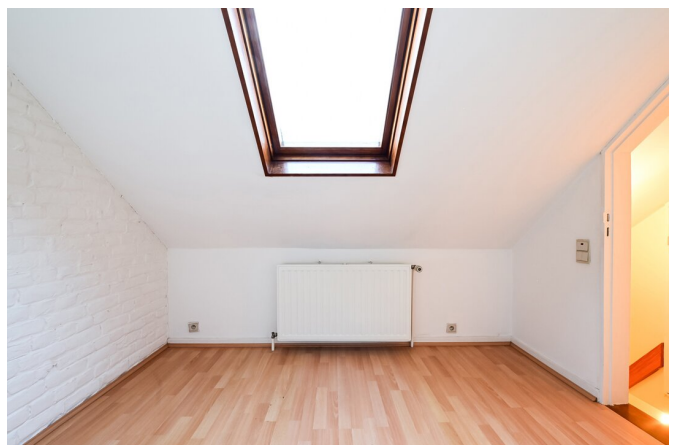
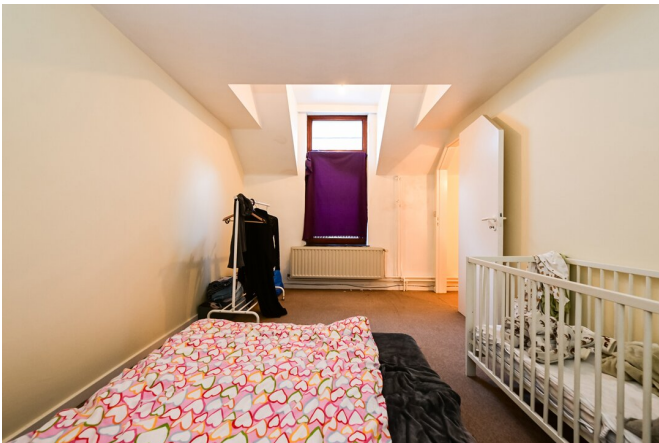
FIERCE

I M M O



FIERCE

I M M O



FIERCE

I M M O



Interested in this estate?

Contact us for more information



Noah Todaro

Conseiller immobilier | Ventes | Locations - IPI
800.066

- T. +32 492 40 78 05
- E. noah@fierceimmo.com

FIERCE

I M M O