

FIERCE  
I M M O

JOURNÉE  
PORTES  
OUVERTES

QUAND ?

SAMEDI 17 MAI  
10H00 - 13H30

ARRET HUNDERENVELD, BERCHEM-SAINTE-AGATHE

10 APPARTEMENTS  
NEUFS DE STANDING  
DE 2 À 3 CHAMBRES

## New development "Potaarde" - Open day on 17 May from 10AM

Potaarde 1, 1082 Berchem-Sainte-Agathe

<b>Reference</b>	6635351
<b>Price</b>	€ 380.000
<b>Ground surface</b>	550m <sup>2</sup>
<b>Living surface</b>	114m <sup>2</sup>
<b>Terrace surface</b>	8m <sup>2</sup>
<b>Bedrooms</b>	3
<b>Bathrooms</b>	2
<b>Garages</b>	1

## Description

Looking for your dream home? Look no further! Fierce Immo is proud to present its latest new-build development in Berchem-Sainte-Agathe.

A perfect combination of modernity and comfort, while meeting the latest environmental standards (e.g. voltaic panels, rainwater recovery, triple glazing, etc.), this 10-apartment project is ideally located between town and country.

Each apartment has been carefully designed to meet the needs of future residents. The bright, spacious living areas provide a warm, welcoming atmosphere. Finishes and fittings, as chosen by the buyer, are of the highest quality. Fully equipped kitchens, elegant bathrooms and practical storage spaces are an integral part of every apartment. There's also a garden or terrace to relax on after a long day.

The location of our new development is another major advantage. Close to shops, schools and public transport (the city center is just a few minutes away thanks to numerous bus and tram lines), you'll enjoy a dynamic urban lifestyle in a calm, peaceful environment. In fact, Kattebroek Park is just across the street from your apartment! Fancy a stroll? The Promenade verte paths are just waiting for you!

Don't miss this opportunity to become the owner of an exceptional new home, made to last. Contact us now for more information and a presentation in our Brussels office.

## Essential info

<b>Reference</b>	6635351
<b>Type</b>	Flat
<b>Ground surface</b>	550m <sup>2</sup>
<b>Living surface</b>	114m <sup>2</sup>
<b>Terrace surface</b>	8m <sup>2</sup>
<b>Garden surface</b>	11m <sup>2</sup>
<b>Year of construction</b>	2025
<b>Availability</b>	At delivery
<b>Elevator available</b>	Yes

## Required info

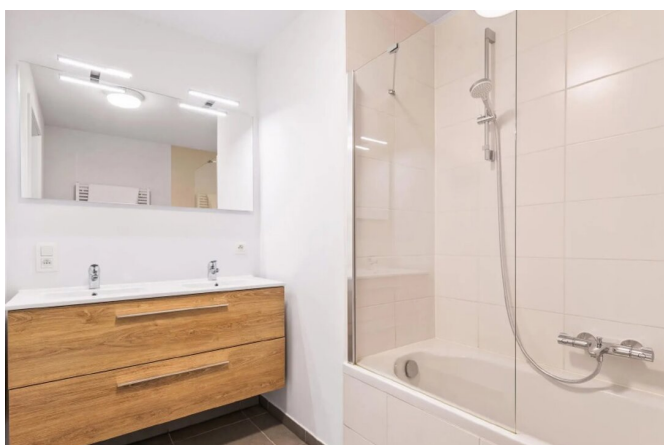
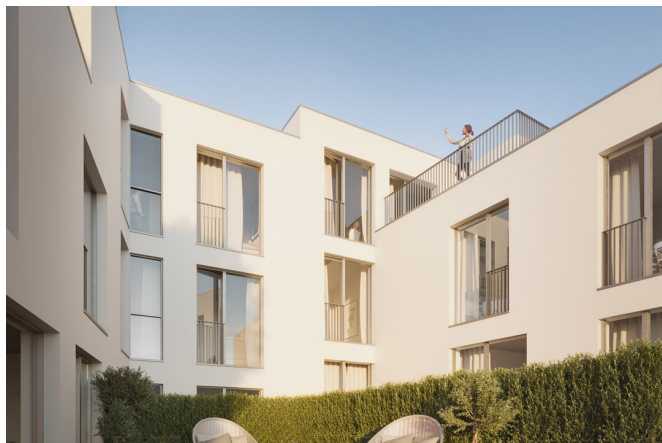
<b>EPC Value</b>	36
<b>EPC Label</b>	A
<b>Urban planning destination</b>	Unknown
<b>Urban planning permit</b>	Yes
<b>Subdivision permit</b>	Yes
<b>Summons</b>	No
<b>Court decision</b>	No
<b>Right to sell</b>	Unknown
<b>O-Level</b>	Not located in flood area

## Layout

<b>Toilets</b>	2
<b>Garages</b>	1
<b>Parking places</b>	1

# FIERCE

I M M O



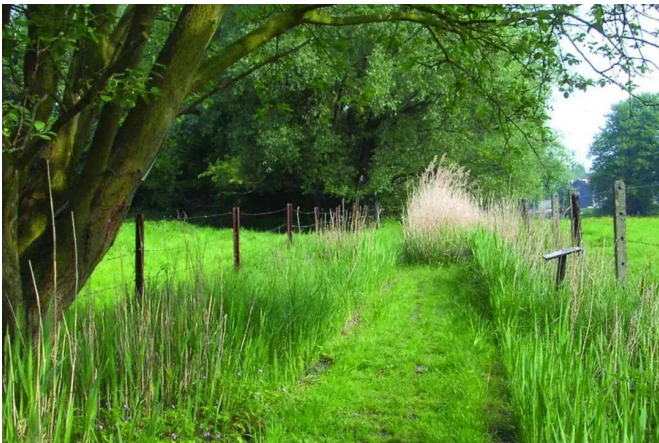
# FIERCE

I M M O



# FIERCE

I M M O



FIERCE  
I M M O

**PRESENTATIE  
OP KANTOOR  
LOUIZALAAN 231  
1050 BRUSSEL**

FIERCE  
I M M O

**PRESENTATIE  
OP KANTOOR  
LOUIZALAAN 231  
1050 BRUSSEL**

## Interested in this estate?

Contact us for more information



### Michaël Baert

Responsible New constructions - IPI 512.639

- T. +32 472 46 93 44
- E. [michael@fierceimmo.com](mailto:michael@fierceimmo.com)

# FIERCE

I M M O