



OPPORTUNITY - 3 bedrooms in a new project of 3 units!

Avenue du Cimetière de Bruxelles 103, 1140 Evere

Reference	6622811
Price	€ 380.000
Ground surface	90m ²
Living surface	105m ²
Terrace surface	10m ²
Bedrooms	3
Bathrooms	2

Description

Between Place Paduwa and the Brussels Cemetery, Fierce Immo presents this 3 bedroom apartment of 105 sqm. in its new project in Evere, close to all amenities, major roads and transportation.

A small condominium with just 3 units, ranging from 1-bedroom to 3-bedroom.

All apartments offer a spacious, bright living area, spacious bedrooms, a large bathroom, a separate toilet and a large cellar.

The developer has used quality materials and ensured that the finishes are perfect: super-equipped kitchens, individual high-efficiency gas boilers, semi-massive oak parquet flooring, triple glazing, videophony, two coats of paint, etc. All individual (water, gas, electricity). PEB A and B+. Advantageous taxation: 12.50% on the land value (abattement possible) and 21% on the building value. Available immediately. Ideal for first-time buyers or for investment with complete peace of mind.

Essential info

Reference	6622811
Type	Flat
Ground surface	90m ²
Living surface	105m ²
Terrace surface	10m ²
Garden surface	25m ²
Year of construction	2023
Availability	Immediately

Required info

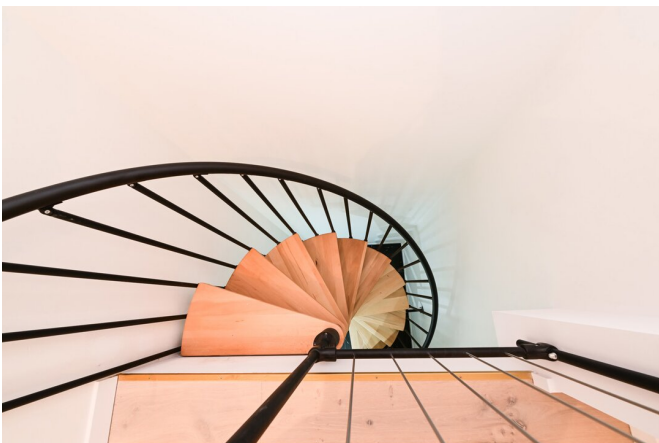
EPC Value	40
EPC Label	A
Urban planning destination	Unknown
Urban planning permit	Yes
Subdivision permit	Yes
Summons	No
Court decision	No
Right to sell	Unknown
O-Level	Not located in flood area

Layout

Toilets 2

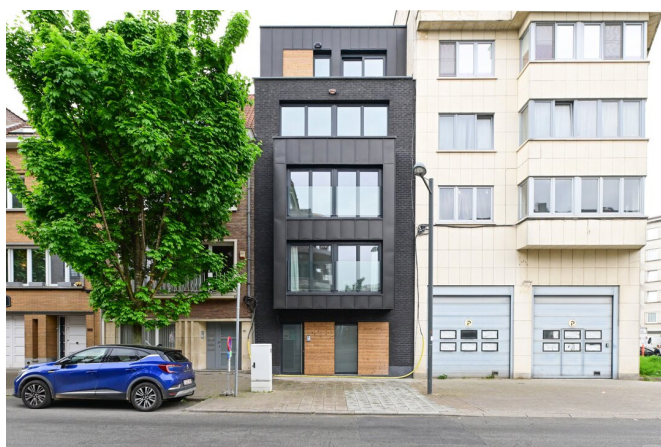
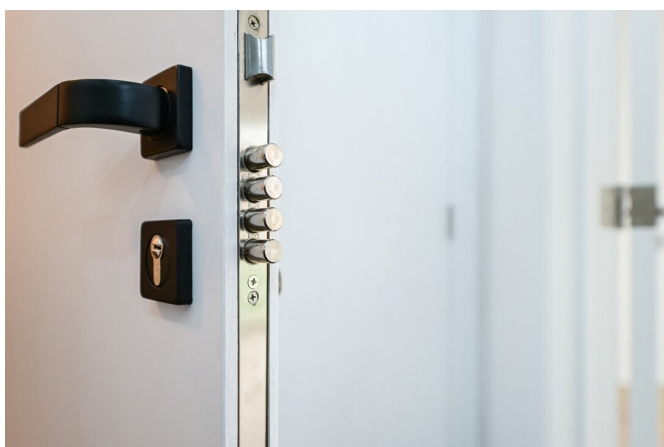
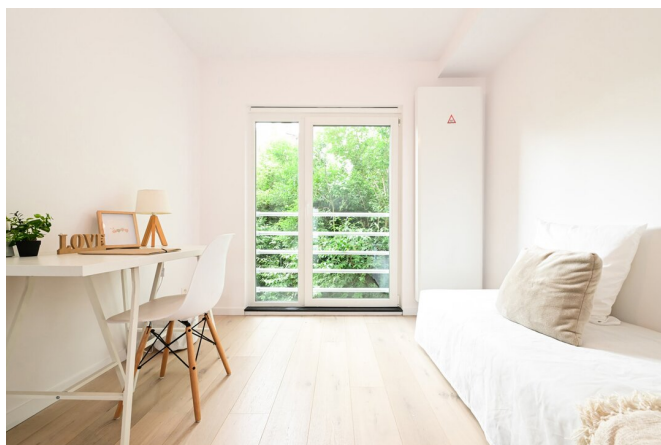
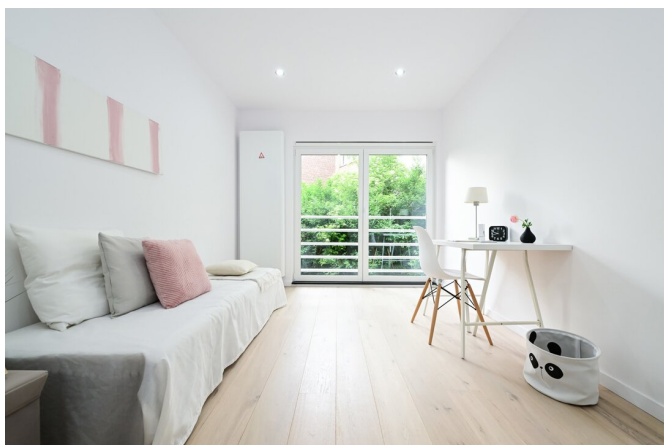
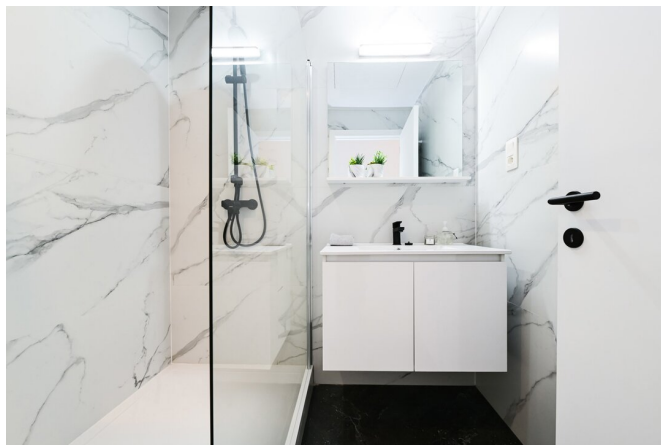
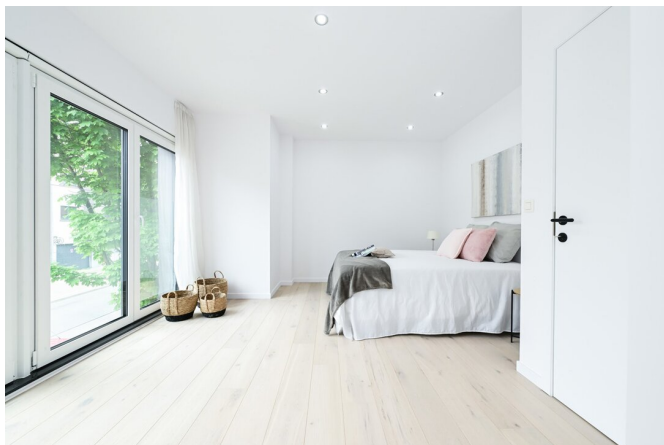
FIERCE

I M M O



FIERCE

I M M O



Interested in this estate?

Contact us for more information



Michaël Baert

Responsible New constructions - IPI 512.639

- T. +32 472 46 93 44
- E. michael@fierceimmo.com

FIERCE

I M M O