



Dream 1-bedroom apartment

Rue du Pavillon 45 8, 1030 Schaerbeek

FIERCE

I M M O

Reference	6702015
Price	€ 269.900
Ground surface	450m ²
Living surface	67m ²
Terrace surface	5m ²
Bedrooms	1
Bathrooms	1

Description

Fierce Immo is proud to exclusively market Ydilles, an exceptional new development in the heart of Schaerbeek! This human-scale project will comprise 4 apartments, ranging from 1-bedroom to 3-bedroom, as well as two 3-bedroom houses.

Nestled in a friendly neighborhood, it offers all the necessary amenities: proximity to the Docks, Schaerbeek train station, schools, parks and much more!

Every detail has been meticulously selected by the developer to guarantee the sustainability of the project over time, complying with the latest environmental standards and offering everyday comfort. You'll also have the opportunity to personalize your apartment as you wish (tiled floors, semi-massive parquet, super-equipped kitchen, etc.).

After a long day, relax in the landscaped courtyard, with its shared vegetable garden.

The sale is subject to registration fees and VAT for the apartments, and VAT for the houses. Contact us now for a personalized project presentation on 02 / 420 65 01.

FIERCE

I M M O

Essential info

Reference	6702015
Type	Flat
Ground surface	450m ²
Living surface	67m ²
Terrace surface	5m ²
Year of construction	2023
Availability	At the contract
Elevator available	Yes

Required info

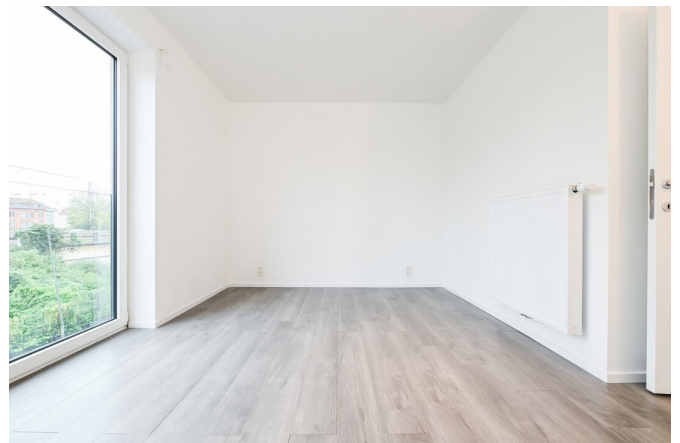
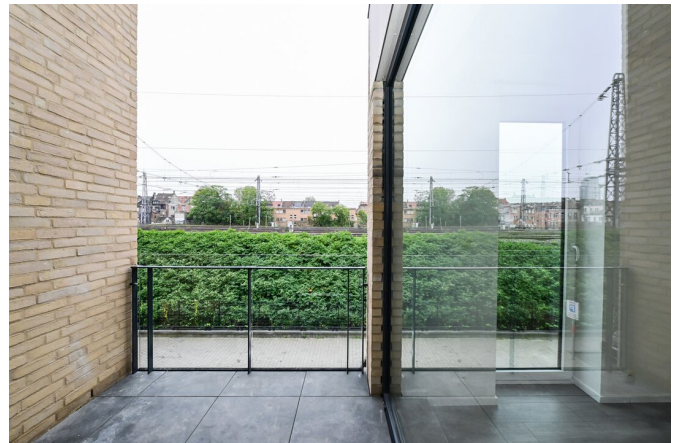
EPC Value	38
EPC Label	A
Urban planning destination	Unknown
Urban planning permit	Yes
Subdivision permit	Yes
Summons	No
Court decision	No
Right to sell	Unknown
O-Level	Not located in flood area

Layout

Toilets 1

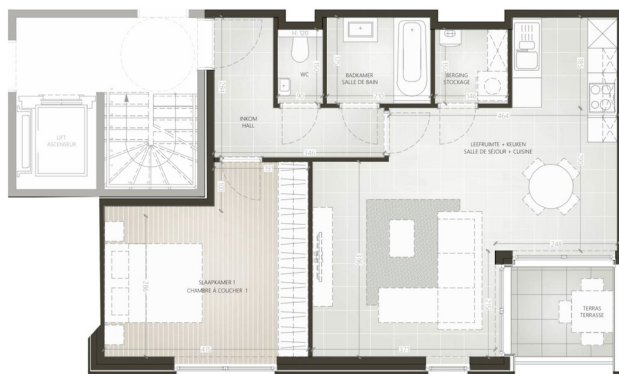
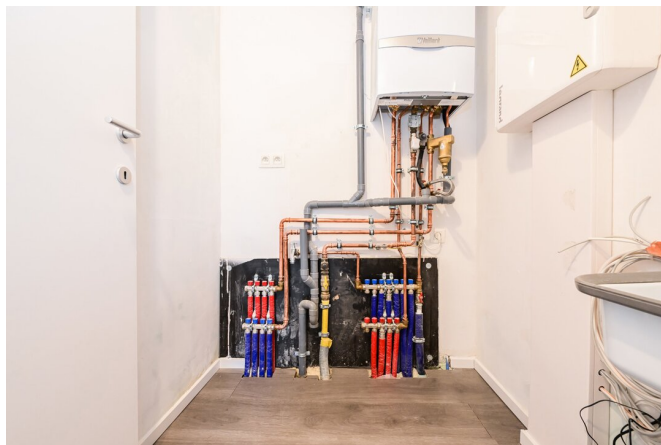
FIERCE

I M M O



FIERCE

I M M O



Interested in this estate?

Contact us for more information



Michaël Baert

Responsible New constructions - IPI 512.639

- T. +32 472 46 93 44
- E. michael@fierceimmo.com

FIERCE

I M M O