



STUNNING NEW PENTHOUSE - 3 BEDROOMS + TERRACE

Avenue de Mai 76 3, 1200 Woluwe-Saint-Lambert

FIERCE

I M M O

Reference	6693775
Price	€ 599.000
Ground surface	200m ²
Living surface	153m ²
Terrace surface	35m ²
Bedrooms	3
Bathrooms	2

Description

Between Georges Henri Park and Roodebeek Park, close to all amenities, discover this superb new penthouse offering three bedrooms, two bathrooms, and a beautiful terrace!

Located on the 3rd and 4th floors of a small condominium with no charges, it is composed as follows: armored door, entrance hall with wardrobe and separate WC; 26 m² living room opening onto a pleasant front balcony; 17 m² master bedroom with a first bathroom (bathtub, double sink, WC); two other bedrooms with access to the rear balcony; shower room.

On the upper floor, a void over the ground floor of the duplex; a very bright open living space including: a fully equipped kitchen with central island; spacious dining/living room opening onto the terrace; laundry room and separate WC.

This apartment, with very high-end finishes, offers a bright living space as well as a beautiful, clear, and green view.

VAT applicable (21%).

A MUST-SEE!!

Essential info

Reference	6693775
Type	Flat
Ground surface	200m ²
Living surface	153m ²
Terrace surface	35m ²
Year of construction	2024
Year of renovation	2024
Availability	At the contract

Required info

EPC Value	32.37
EPC Label	A
Urban planning destination	Unknown
Urban planning permit	No
Subdivision permit	No
Summons	No
Court decision	Unknown
Right to sell	Unknown
O-Level	Not located in flood area

Layout

Toilets 3

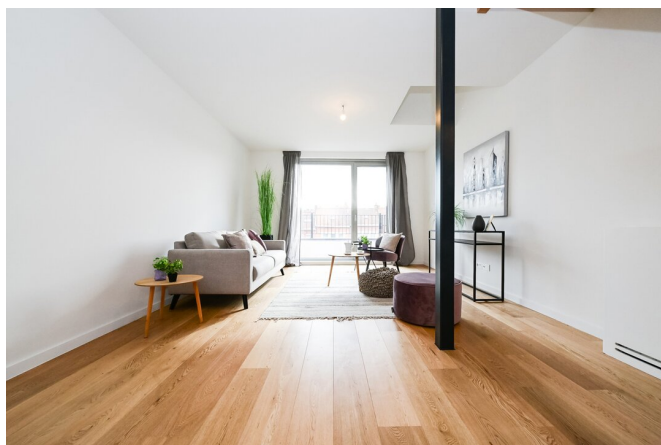
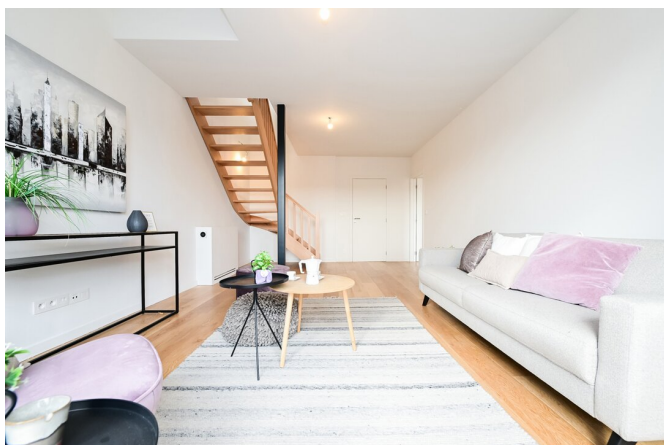
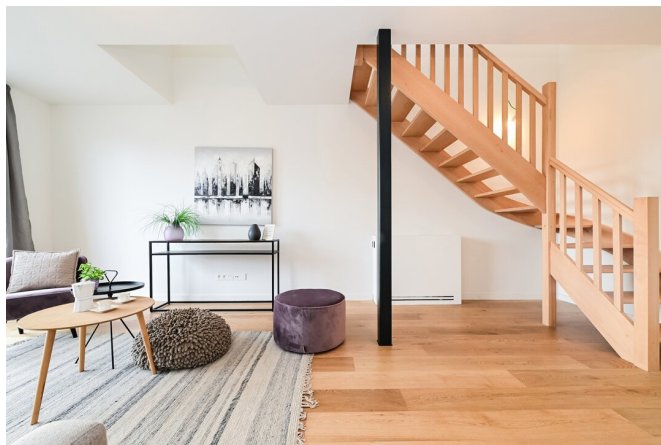
FIERCE

I M M O



FIERCE

I M M O



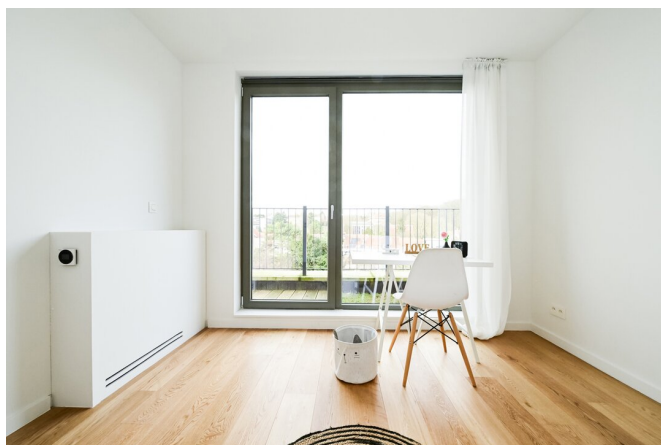
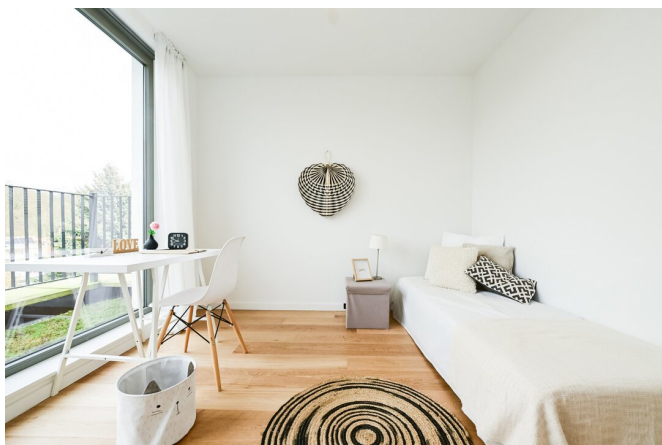
FIERCE

I M M O



FIERCE

I M M O



FIERCE

I M M O



Interested in this estate?

Contact us for more information



Michaël Baert

Responsible New constructions - IPI 512.639

- T. +32 472 46 93 44
- E. michael@fierceimmo.com

FIERCE

I M M O