



3 BEDROOM APARTMENT - DOUBLE TERRACE + PARKING

Chaussée de Namur 34 H05, 1400 Nivelles

Reference	6792403
Price	€ 199.000
Ground surface	5000m ²
Living surface	92m ²
Terrace surface	17m ²
Bedrooms	3
Bathrooms	1
Garages	1

Description

Close to all amenities, discover this apartment in need of refreshing, offering three bedrooms, a double terrace, and parking options.

Located on the fifth floor with an elevator, the property is laid out as follows: secure entrance door, entrance hall, fully equipped kitchen with access to the front balcony (facing East), bright living room also with access to the front balcony (14 m²), night hall leading to three bedrooms (one with a private balcony), shower room, and separate toilet.

Optional (not mandatory):

-

Outdoor parking space: €4,000

-

Secured indoor parking space: €7,000

Contact us for more information or to schedule a visit!

Essential info

Reference	6792403
Type	Flat
Ground surface	5000m ²
Living surface	92m ²
Terrace surface	17m ²
Year of construction	1975
Availability	At the contract
Elevator available	Yes

Required info

EPC Value	276
EPC Label	D
Urban planning destination	Unknown
Urban planning permit	Unknown
Subdivision permit	Unknown
Summons	Unknown
Court decision	Unknown
Right to sell	Unknown
O-Level	Not located in flood area

Layout

Toilets	1
Garages	1
Parking places	1

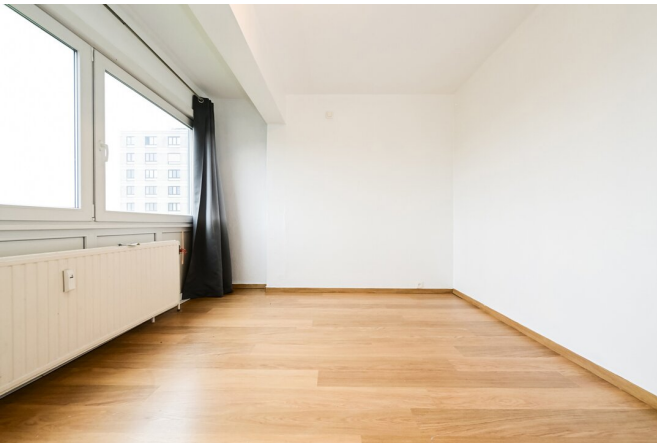
FIERCE

I M M O



FIERCE

I M M O



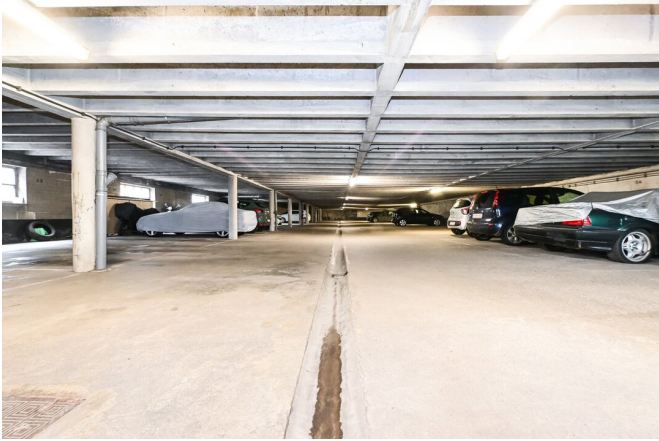
FIERCE

I M M O



FIERCE

I M M O



Interested in this estate?

Contact us for more information



Florent Gossart

Founder | Sales | Rent - IPI 513.507

- T. +32 499 08 92 77
- E. info@fierceimmo.com

FIERCE

I M M O