



Superb new 3-bedroom apartment

Potaarde 1, 1082 Berchem-Sainte-Agathe

FIERCE

I M M O

| | |
|------------------------|-------------------|
| Reference | 6356816 |
| Price | € 375.000 |
| Ground surface | 550m ² |
| Living surface | 114m ² |
| Terrace surface | 8m ² |
| Bedrooms | 3 |
| Bathrooms | 2 |
| Garages | 1 |

Description

Looking for your dream home? Look no further! Fierce Immo is proud to present this 3-bedroom apartment in its brand-new development in Berchem-Sainte-Agathe.

The perfect combination of modernity and comfort, while meeting the latest environmental standards (e.g. voltaic panels, rainwater recovery, triple glazing, etc.), this 10-apartment project is ideally located between town and country.

This apartment has been carefully designed to meet your needs. The bright, spacious living areas provide a warm, welcoming atmosphere. Finishes and fittings, as chosen by the purchaser, are of the highest quality. A fully equipped kitchen, an elegant bathroom and practical storage spaces are an integral part of this apartment. There's also a terrace to relax on after a long day.

The location of this apartment is another major advantage. Close to shops, schools and public transport (just a few minutes to the city center thanks to the many bus and streetcar lines), you'll benefit from a dynamic urban life while enjoying a calm and peaceful environment. In fact, the Promenade verte paths are just waiting for you!

Contact us today for more information and a presentation in our Brussels office.

Essential info

| | |
|-----------------------------|-------------------|
| Reference | 6356816 |
| Type | Flat |
| Ground surface | 550m ² |
| Living surface | 114m ² |
| Terrace surface | 8m ² |
| Year of construction | 2025 |
| Availability | At delivery |
| Elevator available | Yes |

Required info

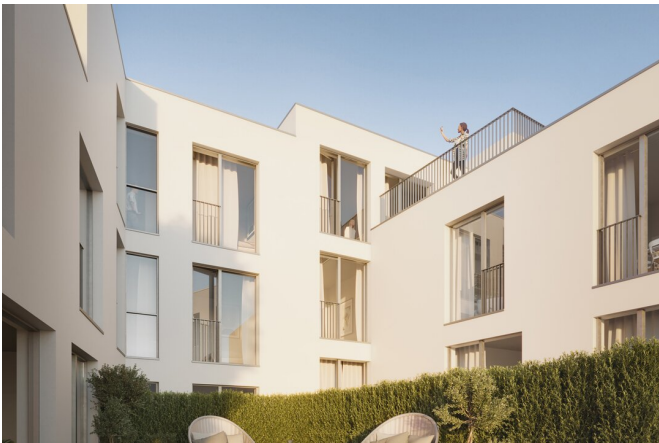
| | |
|-----------------------------------|---------------------------|
| EPC Value | 36 |
| EPC Label | A |
| Urban planning destination | Unknown |
| Urban planning permit | Yes |
| Subdivision permit | Yes |
| Summons | No |
| Court decision | No |
| Right to sell | Unknown |
| O-Level | Not located in flood area |

Layout

| | |
|-----------------------|---|
| Toilets | 2 |
| Garages | 1 |
| Parking places | 1 |

FIERCE

I M M O



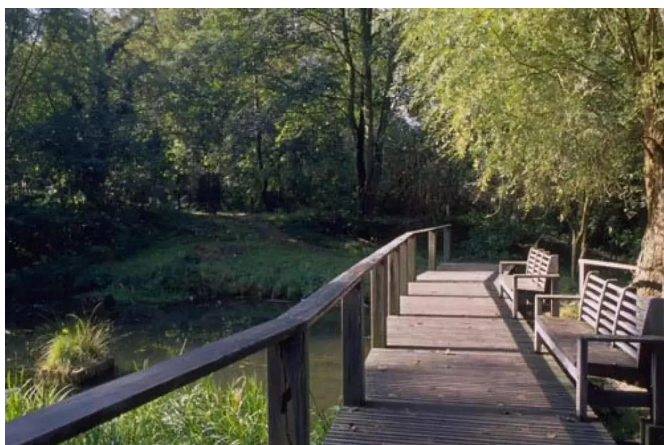
FIERCE

I M M O



FIERCE

I M M O



Interested in this estate?

Contact us for more information



Michaël Baert

Responsible New constructions - IPI 512.639

- T. +32 472 46 93 44
- E. michael@fierceimmo.com

FIERCE

I M M O