



HIGH-END DUPLEX IN CHARACTER BUILDING – 2 BEDROOMS + TERRACE

Rue Fulton 27 1, 1000 Brussels

FIERCE

I M M O

Reference	6838823
Price	€ 500.000
Ground surface	336m ²
Living surface	93m ²
Terrace surface	9m ²
Bedrooms	2
Bathrooms	1

Description

Just a stone's throw from the European institutions, between Parc du Cinquantaire and the Trois Squares district, discover this magnificent duplex apartment, completely renovated with quality materials, offering two bedrooms with their own private bathrooms and a pleasant south-facing terrace.

Located on the second and third floors of a small, characterful building with no charges, the property is composed as follows:

Entrance on landing with guest WC and cupboards, entrance into a bright living room (lounge, dining room) with custom-built, fully-equipped open-plan kitchen and high-quality materials, + access to the terrace (9 m² south-facing). Upstairs, two beautiful bedrooms with their own private bathrooms (1 shower and the other bath) and dressing area in the night hall with laundry area, separate toilet.

Solar panels, compliant electricity, cellar and bike room included. PEB A !!!

Ideal as first home or investment.

VISIT NOW!

Essential info

Reference	6838823
Type	Flat
Ground surface	336m ²
Living surface	93m ²
Terrace surface	9m ²
Year of construction	1929
Year of renovation	2025
Availability	Immediately

Required info

EPC Value	77
EPC Label	B
Urban planning destination	Unknown
Urban planning permit	Unknown
Subdivision permit	Unknown
Summons	Unknown
Court decision	Unknown
Right to sell	Unknown
O-Level	Not located in flood area

Layout

Toilets 2

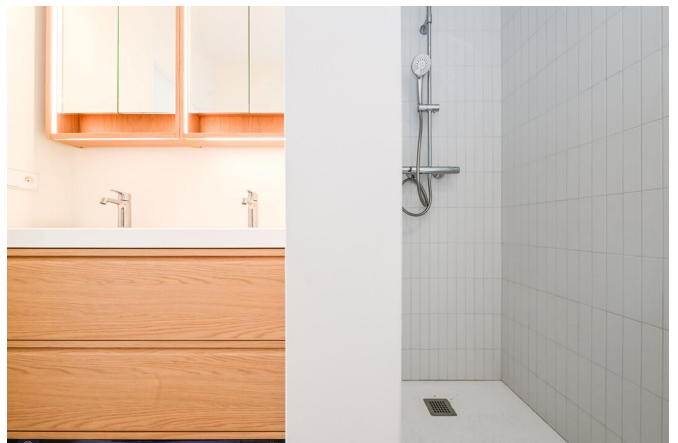
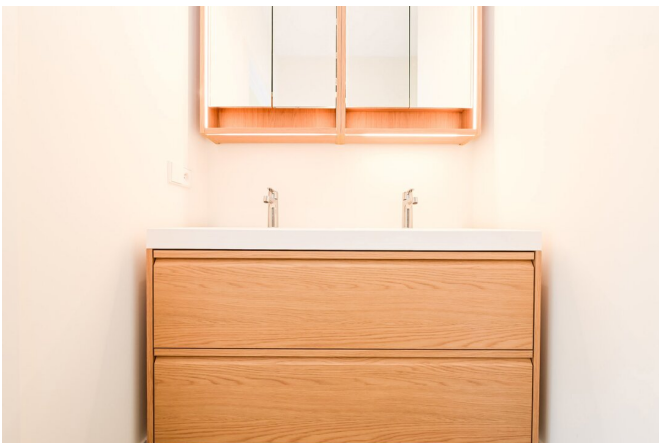
FIERCE

I M M O



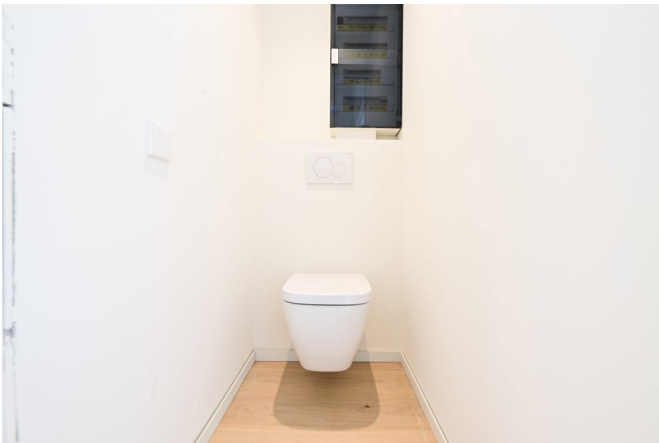
FIERCE

I M M O



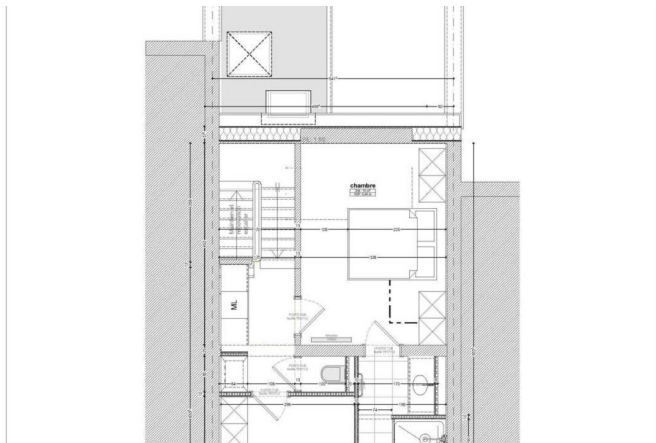
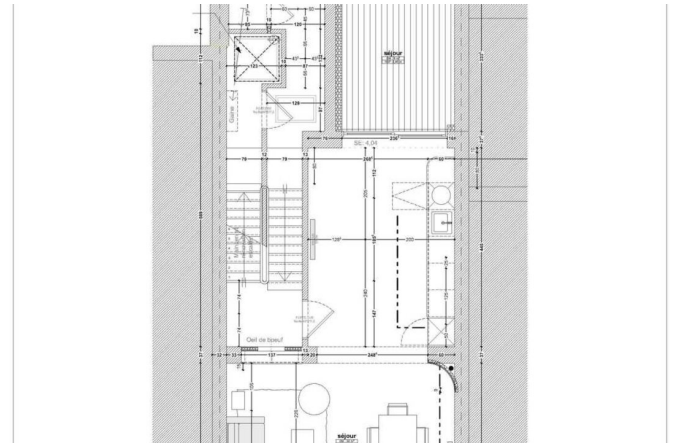
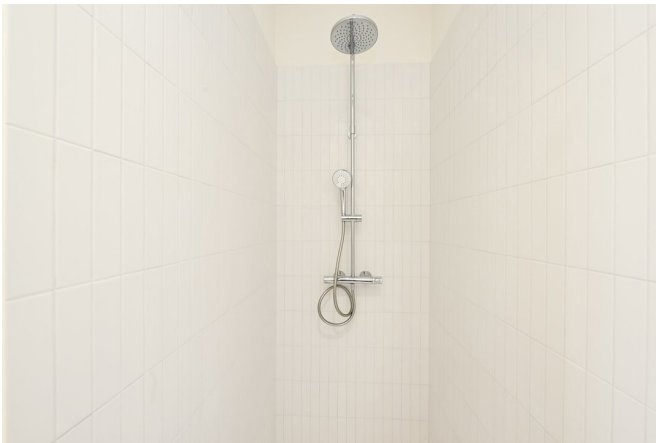
FIERCE

I M M O



FIERCE

I M M O



Interested in this estate?

Contact us for more information



Michaël Baert

Responsible New constructions - IPI 512.639

- T. +32 472 46 93 44
- E. michael@fierceimmo.com

FIERCE

I M M O