



CHARMING HOUSE 4 BEDROOMS - 2 BATHROOMS - GARAGE - GARDEN

Kinsendaelstraat 16, 1180 Uccle

Reference	6819967
Price	€ 550.000
Ground surface	110m ²
Living surface	171m ²
Terrace surface	15m ²
Bedrooms	4
Bathrooms	2
Garages	1

Description

Just steps from the French lycée and the Kinsendael nature reserve, ideally located close to numerous public transport options, discover this charming house offering four bedrooms, two bathrooms, parking, and a pleasant outdoor area.

The house consists of an entrance hall leading to a large living room with a seating area, a veranda with dining space, a semi-open equipped kitchen with access to the lovely garden, as well as a separate toilet and a garage at the front.

On the first floor, there is a front-facing bedroom with a beautiful wooded view of Papenkasteel Castle, a second bedroom, a bathroom, a toilet, and a laundry area.

On the second floor, a large third bedroom facing the street, built-in closets, a fourth bedroom, a dressing room, and a second recently renovated bathroom.

Wooden double glazing, basement storage spaces on the ground floor, storage room, boiler room, and garage. A charming house not to be missed!

Essential info

Reference	6819967
Type	House
Ground surface	110m ²
Living surface	171m ²
Terrace surface	15m ²
Garden surface	30m ²
Year of construction	1956
Year of renovation	2010
Availability	Immediately

Required info

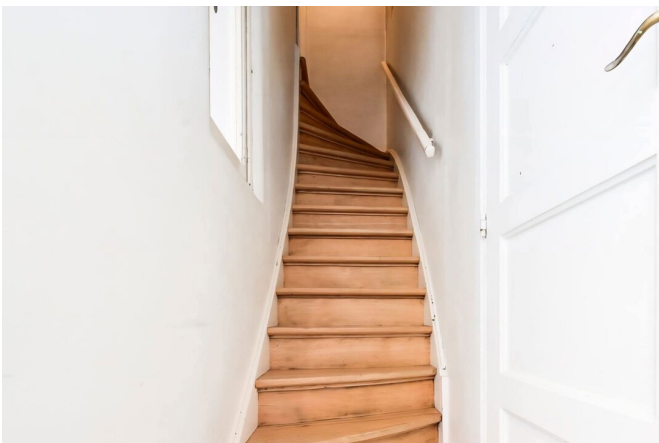
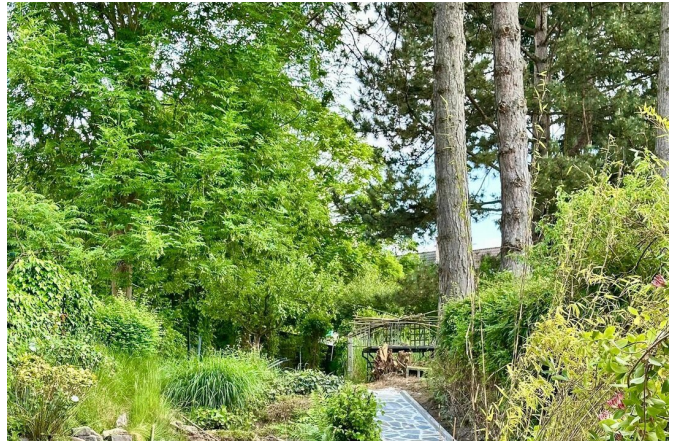
EPC Value	375
EPC Label	G
Urban planning destination	Unknown
Urban planning permit	No
Subdivision permit	No
Summons	No
Court decision	Unknown
Right to sell	Unknown
O-Level	Not located in flood area

Layout

Toilets	3
Garages	1

FIERCE

I M M O



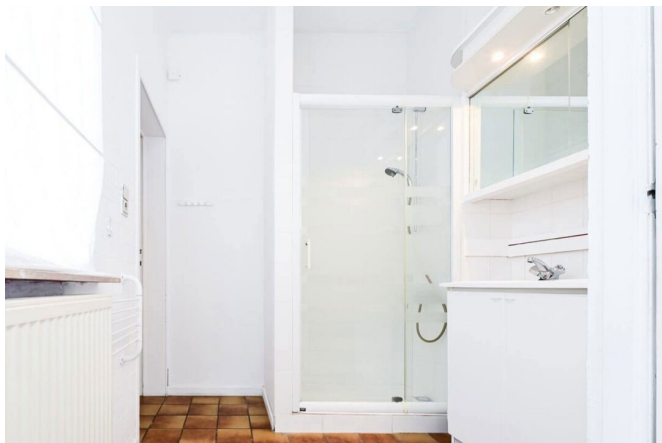
FIERCE

I M M O



FIERCE

I M M O



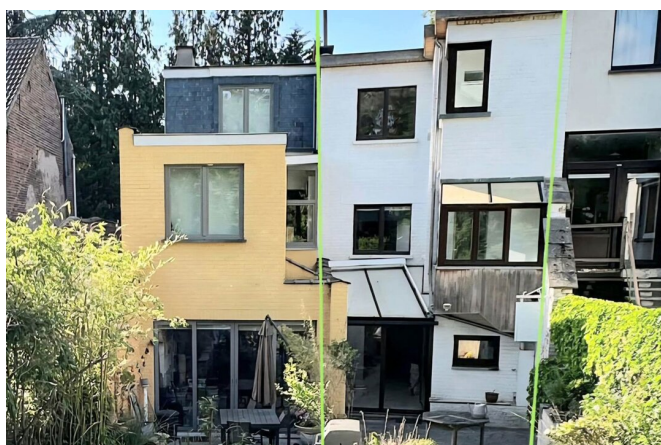
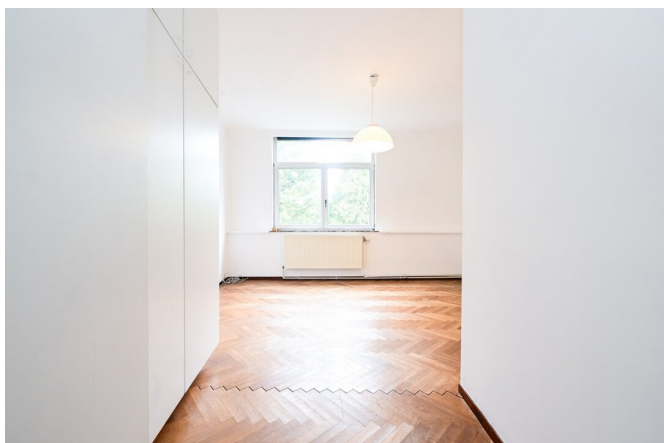
FIERCE

I M M O



FIERCE

I M M O



Interested in this estate?

Contact us for more information



Florent Gossart

Founder | Sales | Rent - IPI 513.507

- T. +32 499 08 92 77
- E. info@fierceimmo.com

FIERCE

I M M O