



## FULLY RENOVATED GARDEN-LEVEL APARTMENT – 2 BEDROOMS – 2 BATH

Rue Fulton 27, 1000 Brussels

# FIERCE

I M M O

Reference	6835380
Price	€ 550.000
Ground surface	336m <sup>2</sup>
Living surface	102m <sup>2</sup>
Terrace surface	15m <sup>2</sup>
Bedrooms	2
Bathrooms	2

## Description

**Just a stone's throw from the European institutions, between Cinquantenaire Park and the Trois Squares district, discover this magnificent ground-floor apartment, fully renovated with high-quality materials. It offers two bedrooms, each with its own en-suite bathroom, and a peaceful, lush private garden.**

Located on the ground floor and basement level of a charming small building **with no communal charges**, the property is laid out as follows:

You enter directly into the living area. At the front, there is a first bedroom with a private shower room. At the rear, you'll find the dining area and a stunning custom-made open-plan kitchen, fully equipped with top-of-the-range materials, with access to the beautiful garden. Separate guest WC.

In the basement: a second bedroom with a private bathroom (bathtub and toilet), a separate storage cellar, and also direct access to the garden.

**Additional features:** solar panels, compliant electrical system, cellar included, and bike storage.

**Energy rating: A!!**

**A MUST-SEE!!**

## Essential info

<b>Reference</b>	6835380
<b>Type</b>	Flat
<b>Ground surface</b>	336m <sup>2</sup>
<b>Living surface</b>	102m <sup>2</sup>
<b>Terrace surface</b>	15m <sup>2</sup>
<b>Garden surface</b>	100m <sup>2</sup>
<b>Year of construction</b>	1929
<b>Year of renovation</b>	2025
<b>Availability</b>	Immediately

## Required info

<b>EPC Value</b>	44
<b>EPC Label</b>	A
<b>Urban planning destination</b>	Unknown
<b>Urban planning permit</b>	Unknown
<b>Subdivision permit</b>	Unknown
<b>Summons</b>	Unknown
<b>Court decision</b>	Unknown
<b>Right to sell</b>	Unknown
<b>O-Level</b>	Not located in flood area

## Layout

**Toilets** 2



# FIERCE

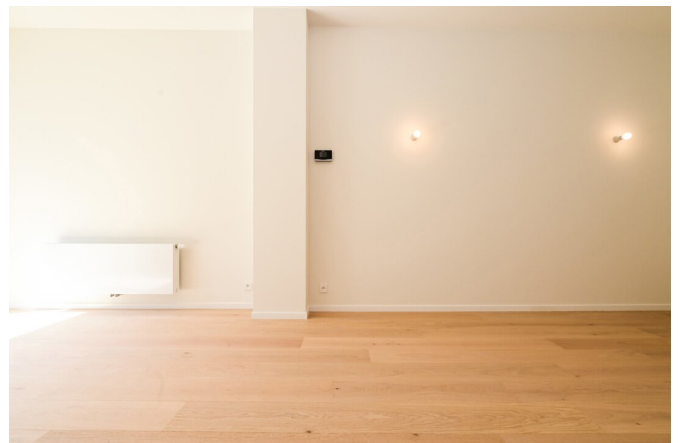
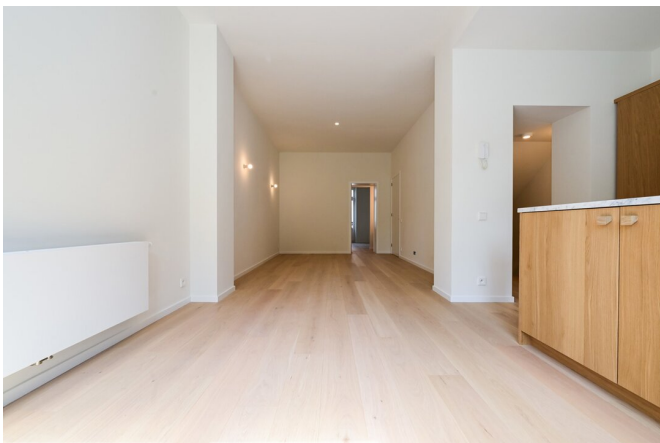
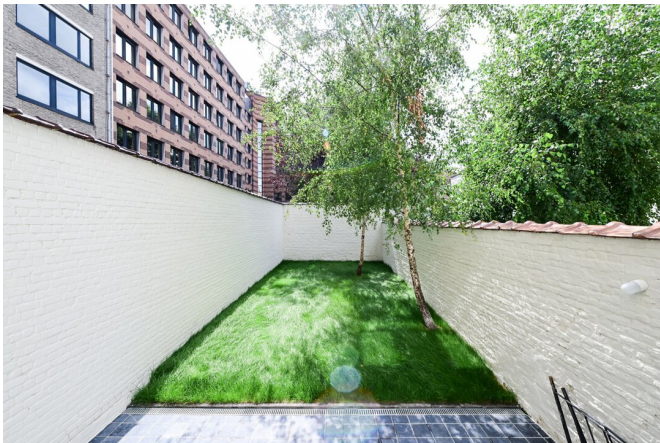
I M M O





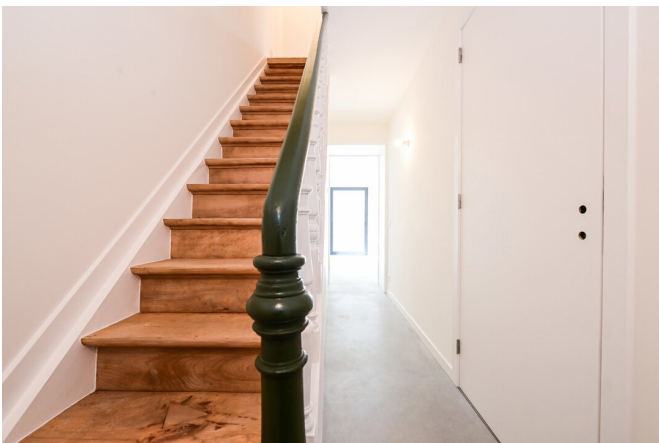
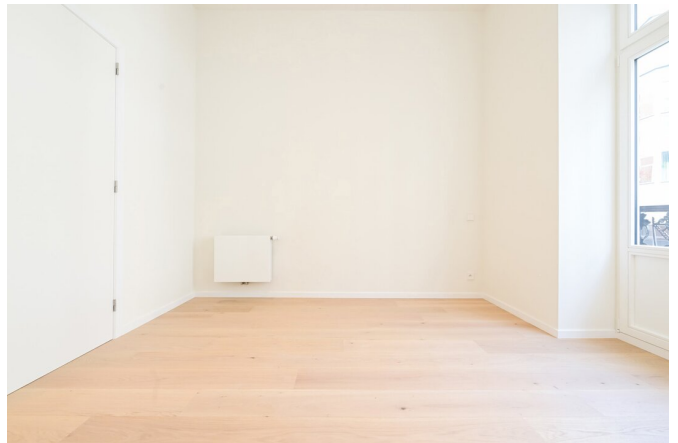
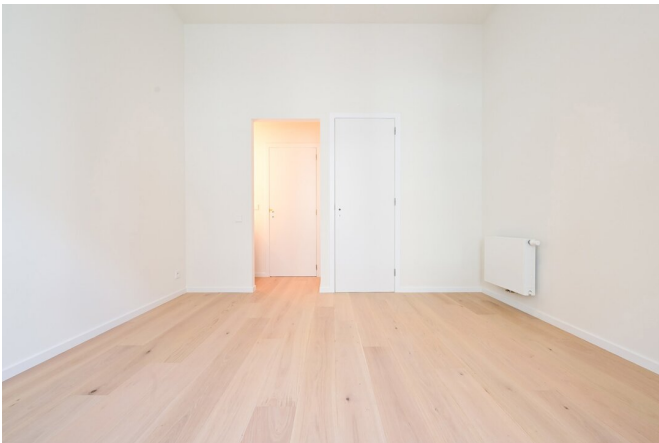
# FIERCE

I M M O



# FIERCE

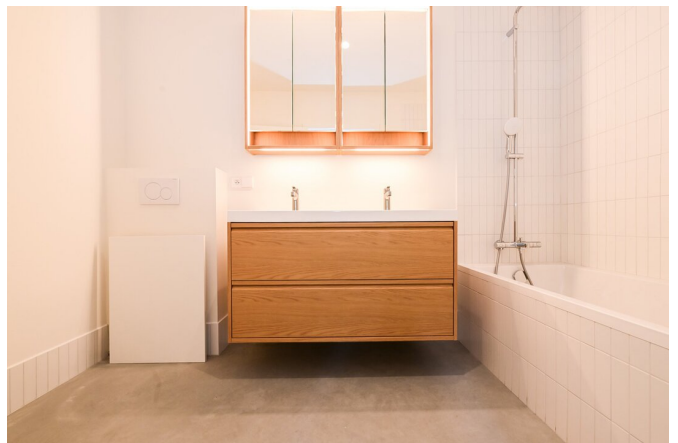
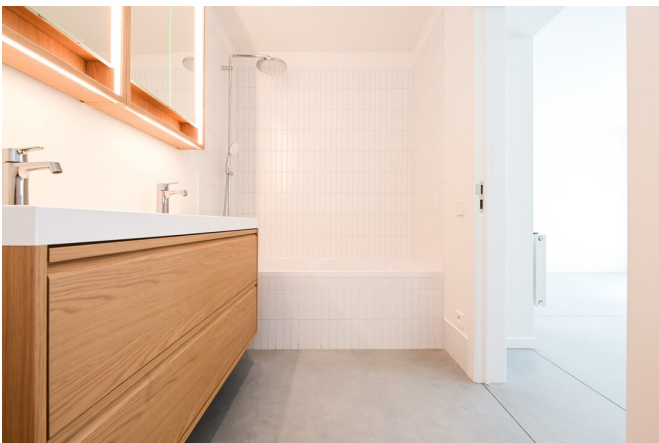
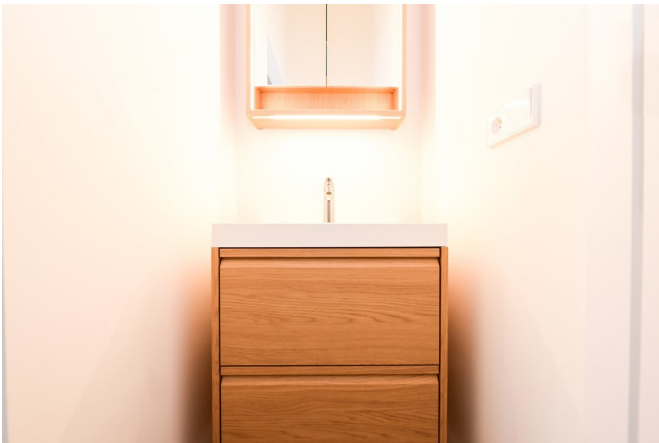
I M M O





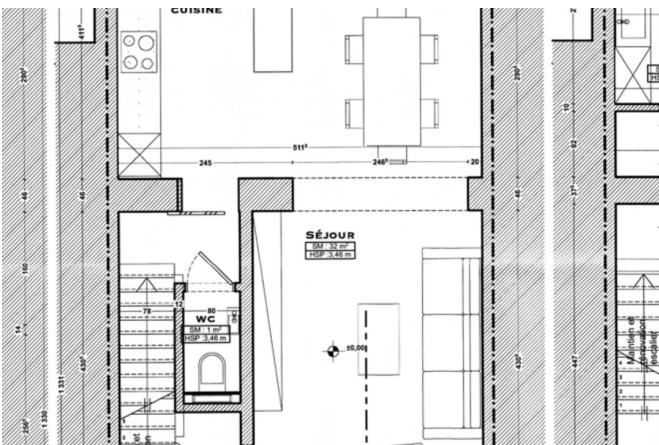
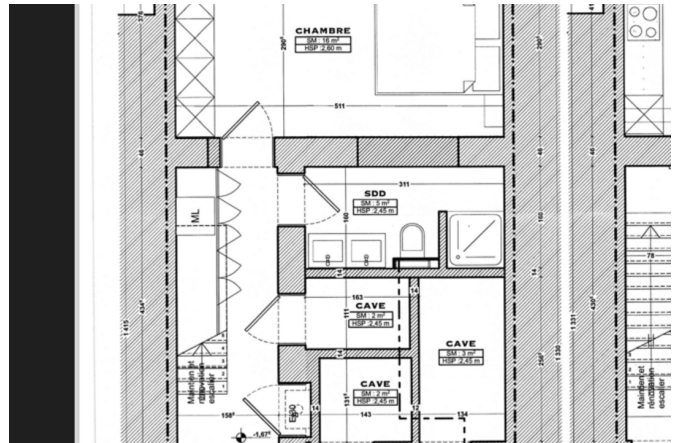
# FIERCE

I M M O



# FIERCE

I M M O





## Interested in this estate?

Contact us for more information



### Michaël Baert

Responsible New constructions - IPI 512.639

- T. +32 472 46 93 44
- E. [michael@fierceimmo.com](mailto:michael@fierceimmo.com)

# FIERCE

I M M O