



CASCO FLAT 2 BEDROOMS + DOUBLE TERRACE - PARKING - CINQUANTENAIRE

Avenue de Tervueren 32, 1200 Woluwe-Saint-Lambert

Reference	7054370
Price	€ 330.000
Ground surface	2000m ²
Living surface	132m ²
Terrace surface	16.3m ²
Bedrooms	2
Bathrooms	1

Description

Ideally located, close to the Cinquantenaire, discover this great project of CASCO flats to be converted into flats. Currently used as an office, we offer this beautiful project with permit accepted! A beautiful 132m² apartment with two bedrooms and a double terrace.

Located on the third floor with lift, the property will consist of a large living room of 40m² with a front terrace (SOUTH), night hall, laundry room, two beautiful bedrooms of 16,9m², a bathroom, a laundry room, a separate toilet and a back terrace for the two bedrooms. AAA location. Contact the agency for more information!

Essential info

Reference	7054370
Type	Flat
Ground surface	2000m ²
Living surface	132m ²
Terrace surface	16.3m ²
Year of construction	1970
Availability	At the contract
Elevator available	Yes

Required info

Urban planning destination	Unknown
Urban planning permit	Yes
Subdivision permit	Unknown
Summons	No
Court decision	Unknown
Right to sell	Unknown
O-Level	Not located in flood area

Layout

Toilets	2
Parking places	1

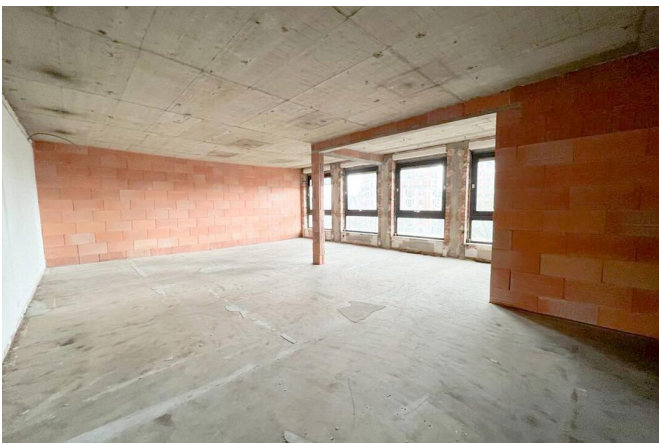
FIERCE

I M M O



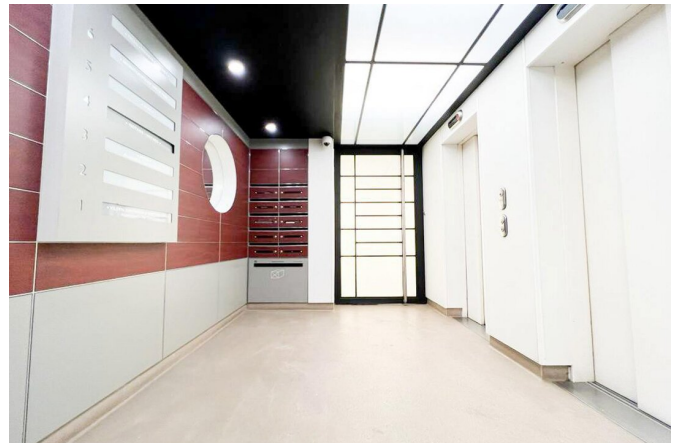
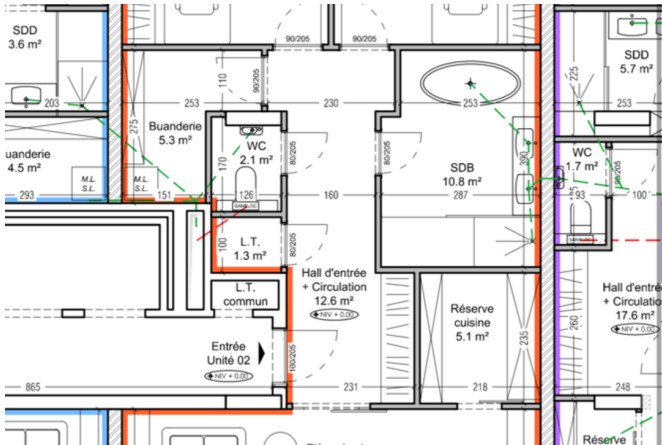
FIERCE

I M M O



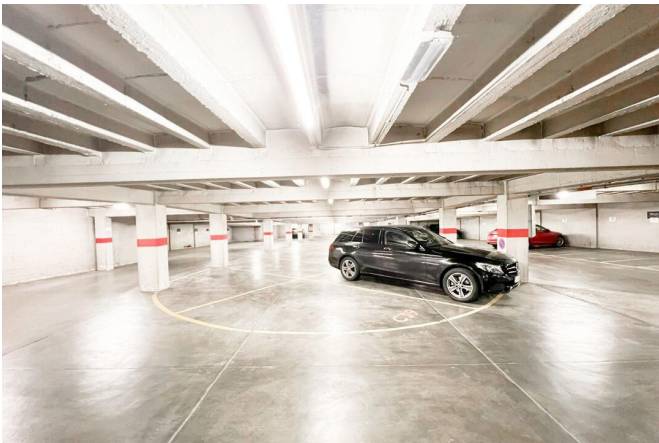
FIERCE

I M M O



FIERCE

I M M O



Interested in this estate?

Contact us for more information



Florent Gossart

Founder | Sales | Rent - IPI 513.507

- T. +32 499 08 92 77
- E. info@fierceimmo.com

FIERCE

I M M O