



Superb new 3-bedroom apartment - works are completed!

Potaarde 1, 1082 Berchem-Sainte-Agathe

FIERCE

I M M O

Reference	7211661
Price	€ 380.000
Ground surface	550m ²
Living surface	114m ²
Terrace surface	8m ²
Bedrooms	3
Bathrooms	2
Garages	1

Description

Looking for your dream home? Look no further! Fierce Immo is proud to present this 3-bedroom apartment + office space in its brand-new development in Berchem-Sainte-Agathe.

The perfect combination of modernity and comfort, while meeting the latest environmental standards (e.g. voltaic panels, rainwater recovery, triple glazing, etc.), this 10-apartment project is ideally located between town and country.

This apartment has been carefully designed to meet your needs. The bright, spacious living areas provide a warm, welcoming atmosphere. Finishes and fittings, as chosen by the purchaser, are of the highest quality. A fully equipped kitchen, an elegant bathroom and practical storage spaces are an integral part of this apartment. There's also a terrace to relax on after a long day.

The location of this apartment is another major advantage. Close to shops, schools and public transport (just a few minutes to the city center thanks to the many bus and streetcar lines), you'll benefit from a dynamic urban life while enjoying a calm and peaceful environment. In fact, the Promenade verte paths are just waiting for you!

Contact us today for more information and a presentation in our Brussels office.

Essential info

Reference	7211661
Type	Flat
Ground surface	550m ²
Living surface	114m ²
Terrace surface	8m ²
Garden surface	11m ²
Year of construction	2025
Availability	At delivery
Elevator available	Yes

Required info

EPC Value	36
EPC Label	A
Urban planning destination	Unknown
Urban planning permit	Yes
Subdivision permit	Yes
Summons	No
Court decision	No
Right to sell	Unknown
O-Level	Not located in flood area

Layout

Toilets	2
Garages	1
Parking places	1

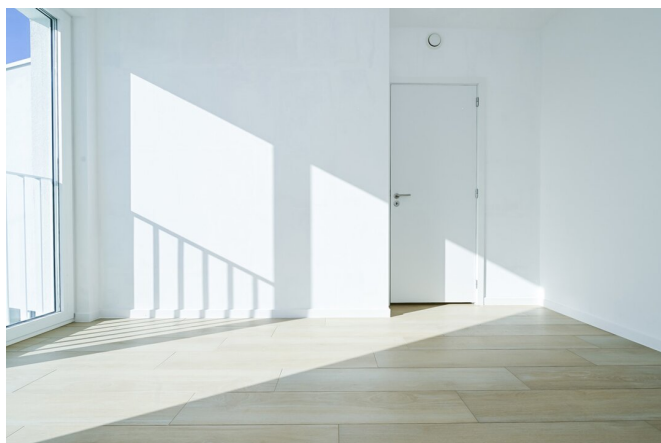
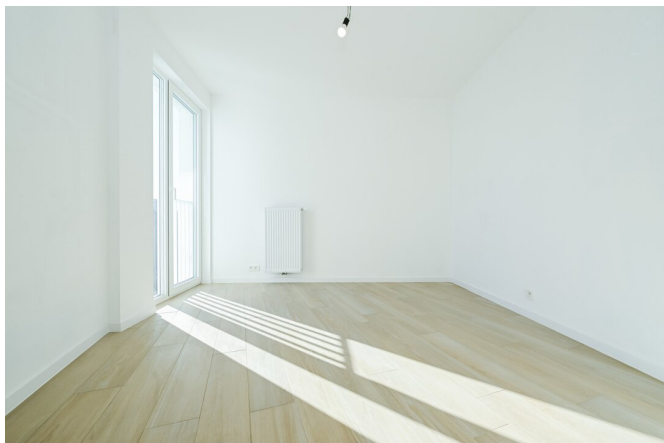
FIERCE

I M M O



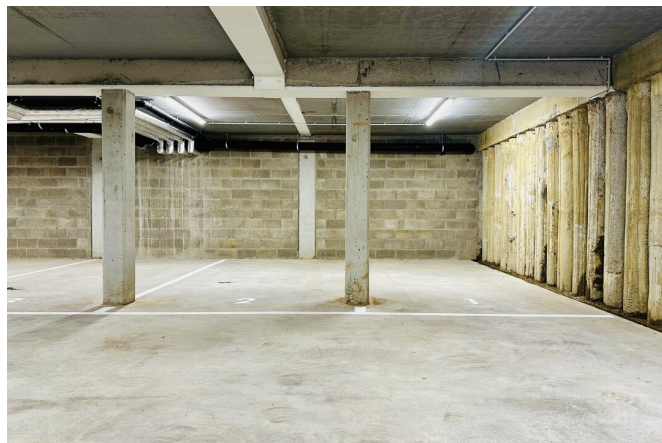
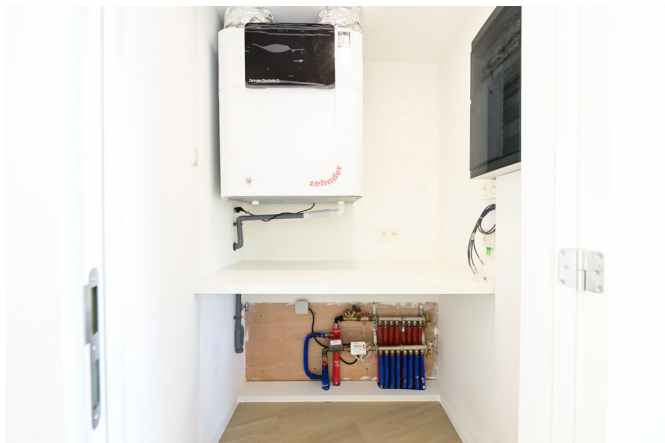
FIERCE

I M M O



FIERCE

I M M O



Interested in this estate?

Contact us for more information



Michaël Baert

Responsible New constructions - IPI 512.639

- T. +32 472 46 93 44
- E. michael@fierceimmo.com

FIERCE

I M M O