



MAGNIFICENT DUPLEX IN AN IDEAL LOCATION

Avenue d'Uccle 1, 1190 Forest

FIERCE

I M M O

Reference	20582667
Price	€ 250.000
Living surface	90m ²
Bedrooms	1
Bathrooms	1

Description

Ideally located in Forest, this spacious duplex of approximately 90 m² comprises a ground-floor office of approximately 28 m² (currently used as a studio apartment), included in the sale, and the duplex itself on the first and second floors.

This property is situated on a quiet street, close to public transport and all amenities.

The apartment features, on the first floor, a large, light-filled living room and a semi-equipped open-plan kitchen, offering a comfortable and practical living space.

Also on this level are a comfortable bedroom, a bathroom, and a separate WC.

The property benefits from double glazing and individual gas heating.

It is currently rented for €1,300 per month, making it an ideal opportunity for an immediate return on investment.

Essential info

Reference	20582667
Type	Flat
Living surface	90m ²
Year of construction	1900
Availability	Tbd with the tenant

Required info

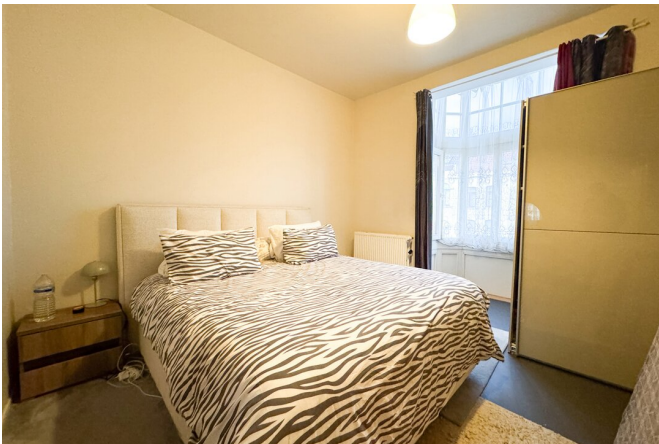
EPC Value	562
EPC Label	G
Urban planning destination	Unknown
Urban planning permit	Unknown
Subdivision permit	Unknown
Summons	Unknown
Court decision	Unknown
Right to sell	Unknown
O-Level	Not located in flood area

Layout

Toilets	1
----------------	---

FIERCE

I M M O



FIERCE

I M M O



Interested in this estate?

Contact us for more information



Noah Todaro

Real estate advisor - IPI 800.066

- T. +32 492 40 78 05
- E. noah@fierceimmo.com

FIERCE

I M M O