



LOT OF OFFICES 700M2 + PARKING SPACES

Avenue de Tervueren 32, 1040 Etterbeek

Reference	7057681
Price	€ 1.749.000
Living surface	700m ²

Description

Ideally located, just a stone's throw from Cinquantenaire, discover this large 720 m² plateau, currently divided into 4 areas + 8 parking spaces. Currently CASCO, we offer you this beautiful project with permit accepted!! of 4 apartments (3 2-bedroom apartments and one 3-bedroom), each with double terraces to be created plus 8 parking spaces in the basement. This large 720m² plateau is located on the third floor with elevator of an attractive condominium. AAA location. Contact the agency for more information!

Essential info

Reference	7057681
Type	Office
Living surface	700m ²
Year of construction	1970
Availability	At the contract
Elevator available	Yes

Required info

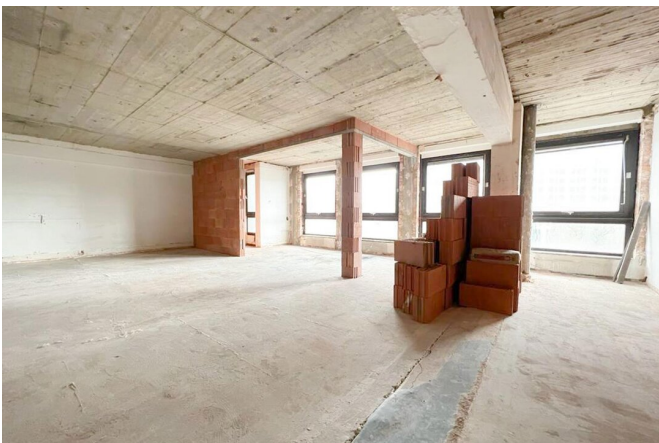
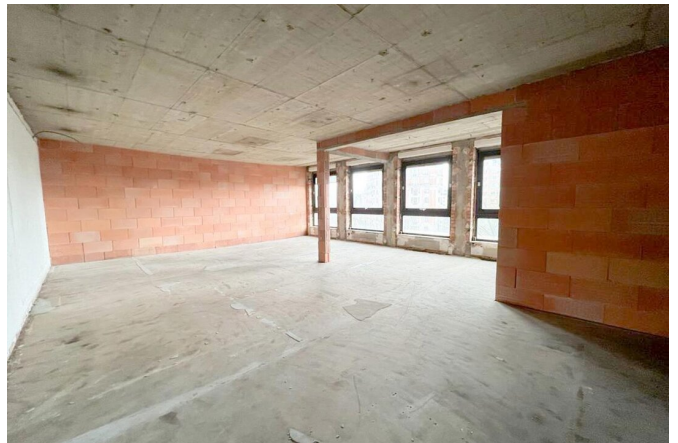
Urban planning destination	Unknown
Urban planning permit	Yes
Subdivision permit	Unknown
Summons	No
Court decision	Unknown
Right to sell	Unknown
O-Level	Not located in flood area

Layout

Toilets	10
Parking places	1

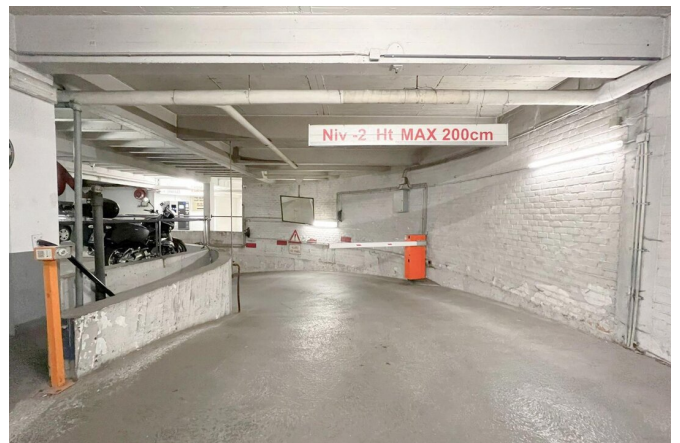
FIERCE

I M M O



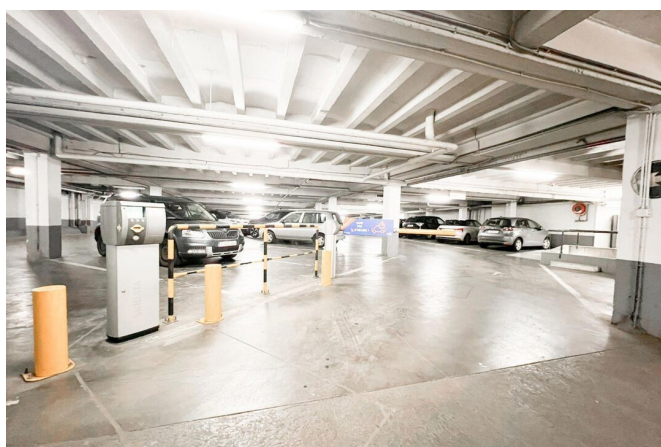
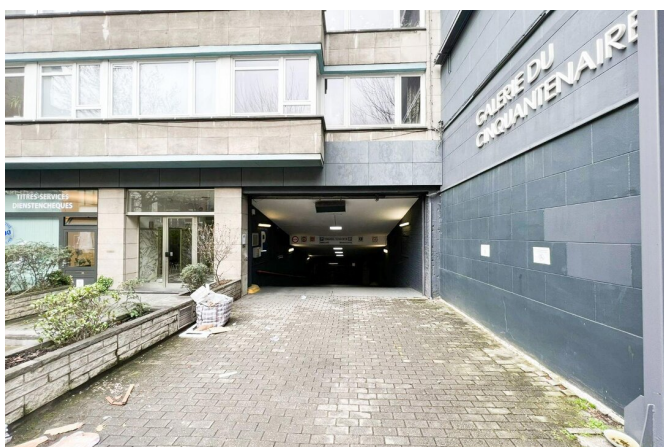
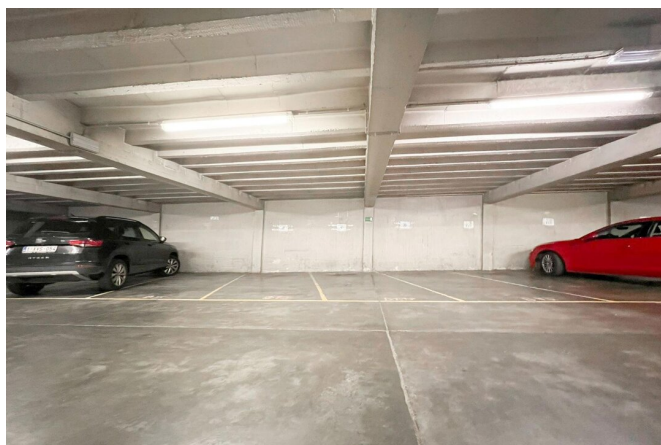
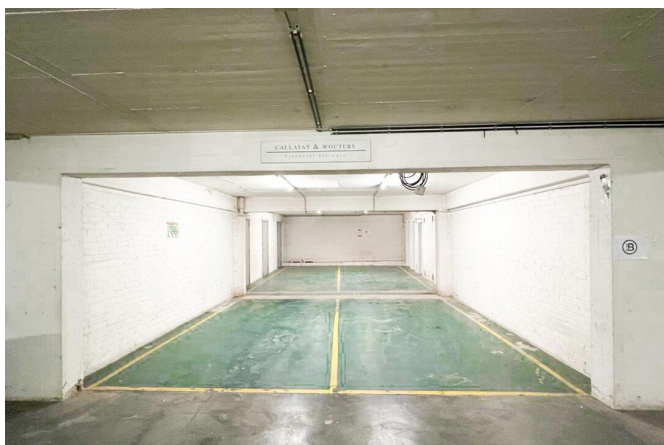
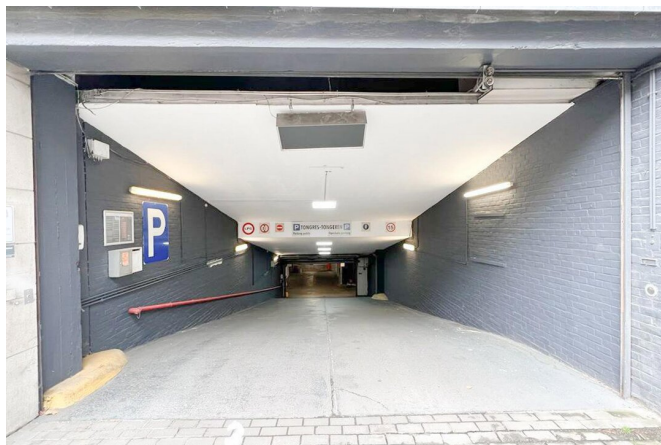
FIERCE

I M M O



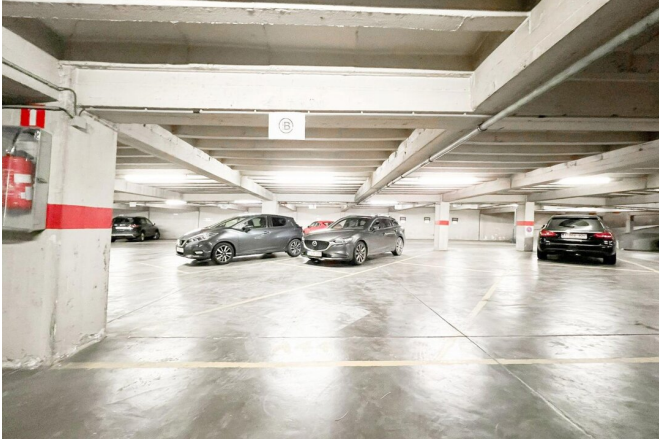
FIERCE

I M M O



FIERCE

I M M O



Interested in this estate?

Contact us for more information



Florent Gossart

Founder | Sales | Rent - IPI 513.507

- T. +32 499 08 92 77
- E. info@fierceimmo.com

FIERCE

I M M O