



INCOME PROPERTY BUILDING WITH 8 APARTMENTS

Rue du Méridien 47, 1210 Saint-Josse-ten-Noode

Reference	6862200
Price	€ 675.000
Living surface	410m ²
Terrace surface	14.6m ²
Bedrooms	8
Bathrooms	7

Description

FIERCE

I M M O

Located in Saint-Josse-Ten-Noode, a stone's throw from the Brussels Botanical Garden and close to all amenities, come and discover this building offering 8 apartments, recognized by the urban planning authorities as 3 lots.

The property is composed as follows: on the ground floor, an apartment with: entrance hall, dining room opening onto the kitchen and living room, night hall, bathroom with shower, and bedroom. The courtyard is accessible from the kitchen and bedroom.

On the 1st floor: a 1-bedroom apartment with living room at the front, bedroom, and bathroom at the rear; at the rear, an apartment with a living room, separate bedroom, and en-suite bathroom.

On the second floor: a two-bedroom apartment with a living room and first bedroom at the front, a second bedroom opening onto the rear, and a bathroom accessible from the entrance hall; at the rear, an apartment with a living room, separate bedroom, and en-suite bathroom.

On the third floor, a one-bedroom apartment with living room and separate kitchen, one bedroom and a bathroom; at the rear, an apartment with living room, separate bedroom and en-suite bathroom. Electricity compliant.

Monthly rental income:

Ground floor: €995.00
First floor front: €570.00
1st floor rear: €615.00
2nd floor front: €700.00
2nd floor rear: €491.27
3rd floor front: €670.00
3rd floor rear: €678.66
Total: €4,719.93

Essential info

Reference	6862200
Type	House
Living surface	410m ²
Terrace surface	14.6m ²
Year of construction	1912
Availability	Tbd with the tenant

Required info

EPC Value	236
EPC Label	E
EPC Code	20210504-0000588094-01-6
Urban planning destination	Unknown
Urban planning permit	Unknown
Subdivision permit	Unknown
Summons	Unknown
Court decision	Unknown
Right to sell	Unknown
O-Level	Not located in flood area

Layout

Toilets 7

FIERCE

I M M O



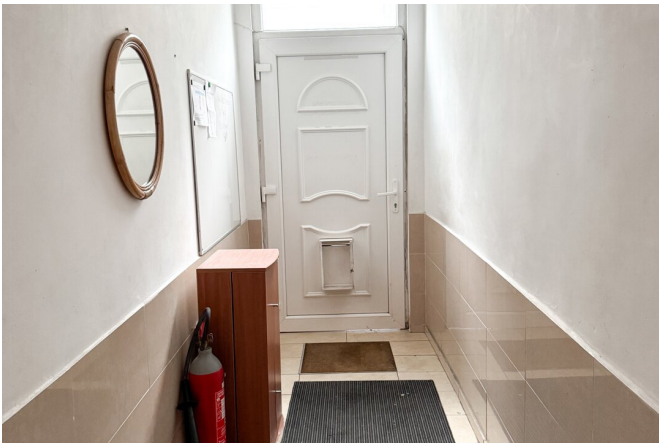
FIERCE

I M M O



FIERCE

I M M O



Interested in this estate?

Contact us for more information



Noah Todaro

Real estate advisor - IPI 800.066

- T. +32 492 40 78 05
- E. noah@fierceimmo.com

FIERCE

I M M O