



## Superb new 2-bedroom apartment - works are completed!

Potaarde 1, 1082 Berchem-Sainte-Agathe

# FIERCE

I M M O

<b>Reference</b>	7235518
<b>Price</b>	€ 320.000
<b>Ground surface</b>	550m <sup>2</sup>
<b>Living surface</b>	97m <sup>2</sup>
<b>Terrace surface</b>	3m <sup>2</sup>
<b>Bedrooms</b>	2
<b>Bathrooms</b>	1
<b>Garages</b>	1

## Description

Looking for your dream home? Look no further! Fierce Immo is proud to present this 2-bedroom apartment in its brand-new development in Berchem-Sainte-Agathe.

The perfect combination of modernity and comfort, while meeting the latest environmental standards (e.g. voltaic panels, rainwater recovery, triple glazing, etc.), this 10-apartment project is ideally located between town and country.

This apartment has been carefully designed to meet your needs. The bright, spacious living areas provide a warm, welcoming atmosphere. Finishes and fittings, as chosen by you, are of the highest quality. A fully equipped kitchen, an elegant bathroom and practical storage spaces are an integral part of this apartment. There's also a terrace to relax on after a long day.

The location of this apartment is another major advantage. Close to shops, schools and public transport (just a few minutes to the city center thanks to the many bus and streetcar lines), you'll benefit from a dynamic urban life while enjoying a calm and peaceful environment. In fact, the Promenade verte paths are just waiting for you!

Contact us today for more information and a presentation in our Brussels office.

## Essential info

<b>Reference</b>	7235518
<b>Type</b>	Flat
<b>Ground surface</b>	550m <sup>2</sup>
<b>Living surface</b>	97m <sup>2</sup>
<b>Terrace surface</b>	3m <sup>2</sup>
<b>Year of construction</b>	2025
<b>Availability</b>	At delivery
<b>Elevator available</b>	Yes

## Required info

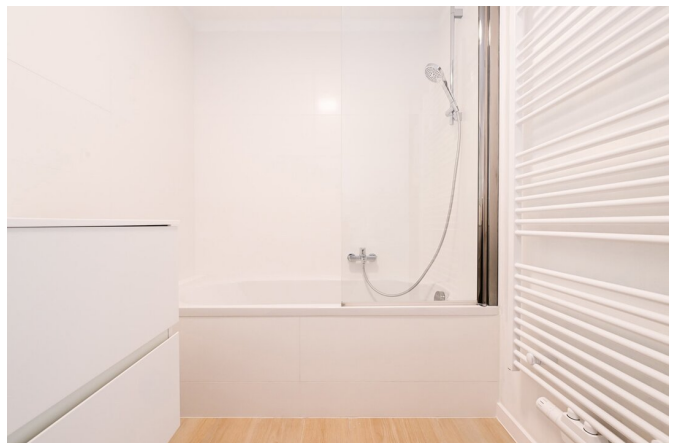
<b>EPC Value</b>	36
<b>EPC Label</b>	A
<b>Urban planning destination</b>	Unknown
<b>Urban planning permit</b>	Yes
<b>Subdivision permit</b>	Yes
<b>Summons</b>	No
<b>Court decision</b>	No
<b>Right to sell</b>	Unknown
<b>O-Level</b>	Not located in flood area

## Layout

<b>Toilets</b>	2
<b>Garages</b>	1
<b>Parking places</b>	1

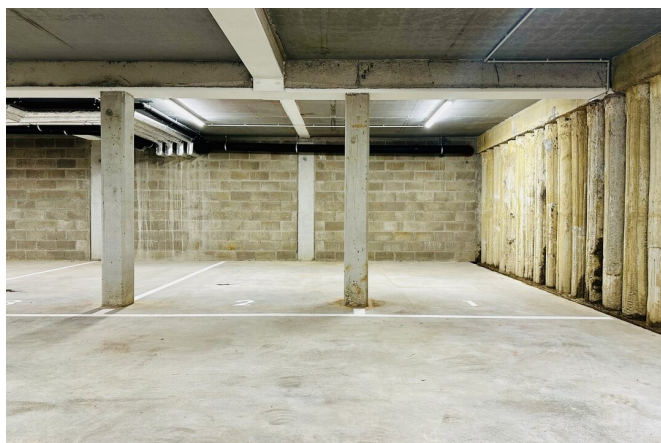
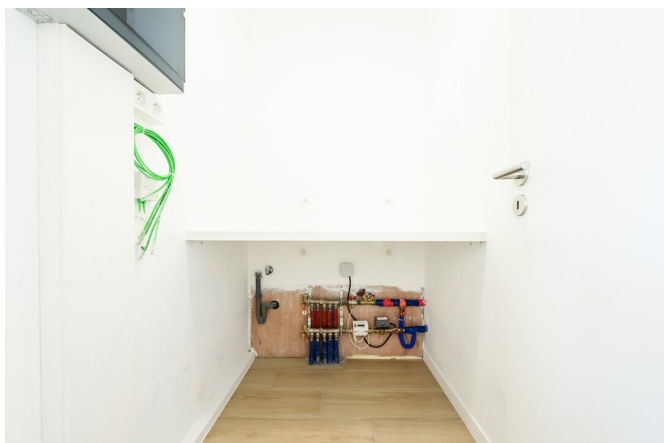
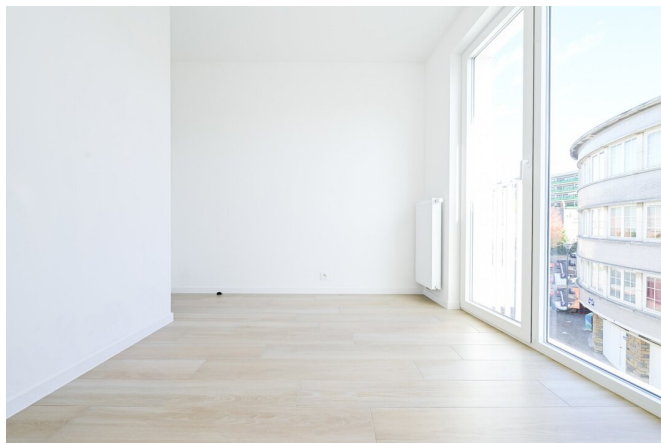
# FIERCE

I M M O



# FIERCE

I M M O





# FIERCE

I M M O



## Interested in this estate?

Contact us for more information



### Michaël Baert

Responsible New constructions - IPI 512.639

- T. +32 472 46 93 44
- E. [michael@fierceimmo.com](mailto:michael@fierceimmo.com)

# FIERCE

I M M O