



## BEAUTIFUL 2-BEDROOM APARTMENT + TERRACE + PARKING BOX

Avenue Louis Piérard 4, 1140 Evere

# FIERCE

I M M O

<b>Reference</b>	7281413
<b>Price</b>	€ 225.000
<b>Ground surface</b>	4850m <sup>2</sup>
<b>Living surface</b>	84m <sup>2</sup>
<b>Terrace surface</b>	4m <sup>2</sup>
<b>Bedrooms</b>	2
<b>Bathrooms</b>	1
<b>Garages</b>	1

## Description

Just steps from the center of Evere, discover this beautiful and bright apartment featuring two bedrooms, a terrace, and a parking box.

Located on the fourth floor of a building with an elevator, it is composed as follows: a spacious entrance hall, a front-facing living room with wooden flooring, a fully equipped rear kitchen with access to the south-facing terrace, a bathroom, a separate toilet, and two rear bedrooms, the smaller of which has access to a balcony.

This property offers a great opportunity for refreshing, ideal for a first purchase, an investment, or personal occupation.

Large parking box available as an option: **€30,000**.

**A MUST-SEE!!**

## Essential info

<b>Reference</b>	7281413
<b>Type</b>	Flat
<b>Ground surface</b>	4850m <sup>2</sup>
<b>Living surface</b>	84m <sup>2</sup>
<b>Terrace surface</b>	4m <sup>2</sup>
<b>Year of construction</b>	1970
<b>Availability</b>	Immediately
<b>Elevator available</b>	Yes

## Required info

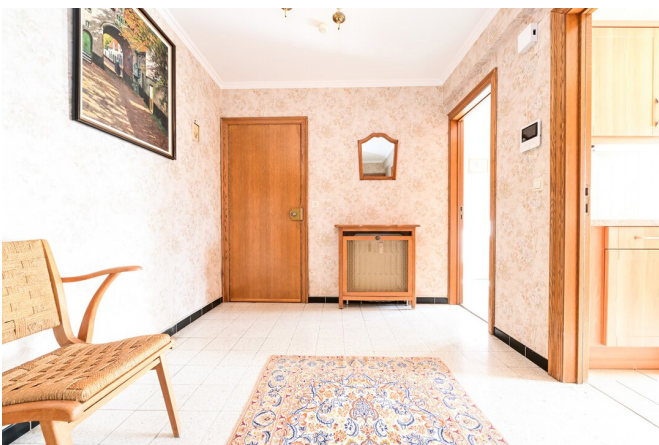
<b>EPC Value</b>	301
<b>EPC Label</b>	F
<b>Urban planning destination</b>	Unknown
<b>Urban planning permit</b>	Unknown
<b>Subdivision permit</b>	Unknown
<b>Summons</b>	Unknown
<b>Court decision</b>	Unknown
<b>Right to sell</b>	Unknown
<b>O-Level</b>	Not located in flood area

## Layout

<b>Toilets</b>	1
<b>Garages</b>	1
<b>Parking places</b>	1

# FIERCE

I M M O



# FIERCE

I M M O



# FIERCE

I M M O



# FIERCE

I M M O



## Interested in this estate?

Contact us for more information



### Noah Todaro

Real estate advisor - IPI 800.066

- T. +32 492 40 78 05
- E. [noah@fierceimmo.com](mailto:noah@fierceimmo.com)

# FIERCE

I M M O