



2 and 3-bedroom apartments - works are completed!

Potaarde 1, 1082 Berchem-Sainte-Agathe

FIERCE

I M M O

Reference	7238013
Price	€ 320.000
Ground surface	550m ²
Living surface	97m ²
Terrace surface	3m ²
Bedrooms	2
Bathrooms	1
Garages	1

Description

Looking for your dream home? Look no further! Fierce Immo is proud to present its latest new-build development in Berchem-Sainte-Agathe.

A perfect combination of modernity and comfort, while meeting the latest environmental standards (e.g. voltaic panels, rainwater recovery, triple glazing, etc.), this 10-apartment project is ideally located between town and country.

Each apartment has been carefully designed to meet the needs of future residents. The bright, spacious living areas provide a warm, welcoming atmosphere. Finishes and fittings, as chosen by the buyer, are of the highest quality. Fully equipped kitchens, elegant bathrooms and practical storage spaces are an integral part of every apartment. There's also a garden or terrace to relax on after a long day.

The location of our new development is another major advantage. Close to shops, schools and public transport (the city center is just a few minutes away thanks to numerous bus and tram lines), you'll enjoy a dynamic urban lifestyle in a calm, peaceful environment. In fact, Kattebroek Park is just across the street from your apartment! Fancy a stroll? The Promenade verte paths are just waiting for you!

Don't miss this opportunity to become the owner of an exceptional new home, made to last. Contact us now for more information and a presentation in our Brussels office.

Essential info

Reference	7238013
Type	Flat
Ground surface	550m ²
Living surface	97m ²
Terrace surface	3m ²
Year of construction	2025
Availability	At the contract
Elevator available	Yes

Required info

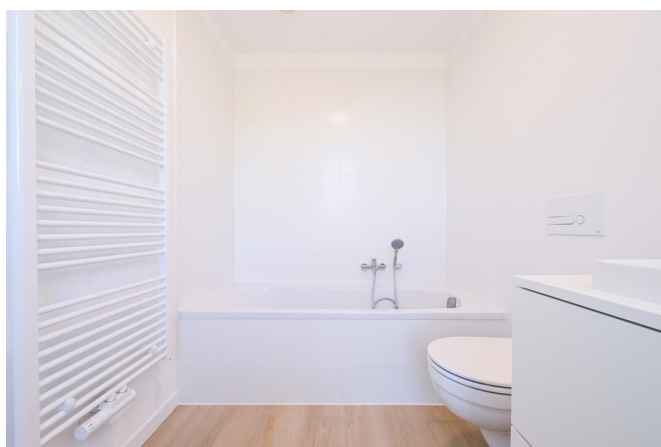
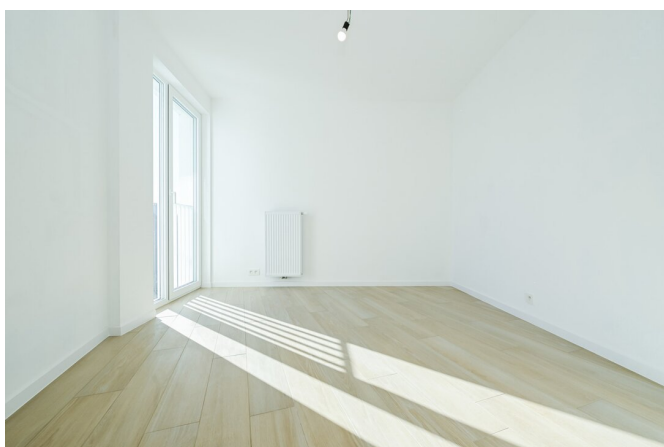
EPC Value	36
EPC Label	A
Urban planning destination	Unknown
Urban planning permit	Yes
Subdivision permit	Yes
Summons	No
Court decision	No
Right to sell	Unknown
O-Level	Not located in flood area

Layout

Toilets	2
Garages	1
Parking places	1

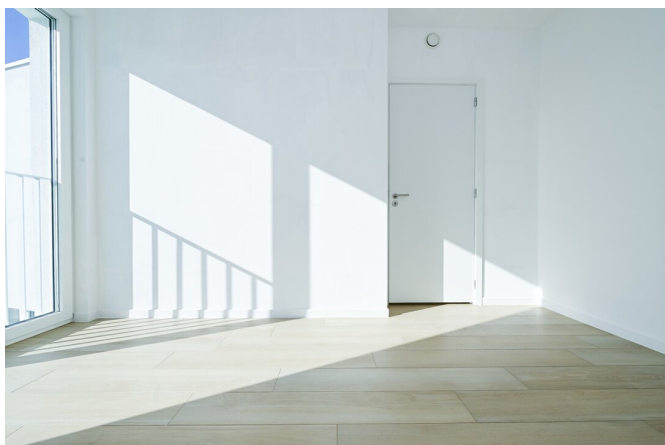
FIERCE

I M M O



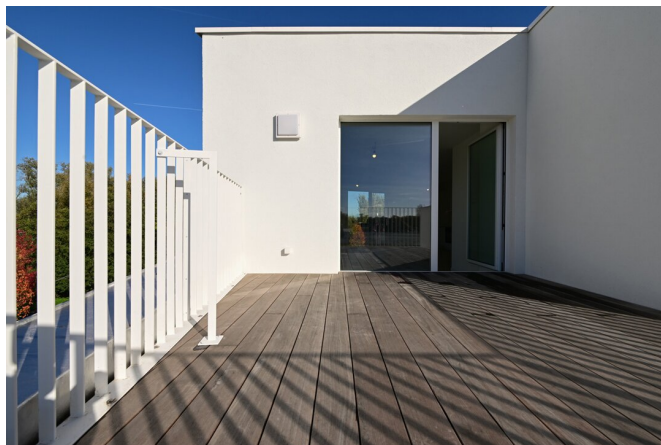
FIERCE

I M M O



FIERCE

I M M O



FIERCE

I M M O



Interested in this estate?

Contact us for more information



Michaël Baert

Responsible New constructions - IPI 512.639

- T. +32 472 46 93 44
- E. michael@fierceimmo.com

FIERCE

I M M O