



Exceptional mansion near the European quarter

Rue de Gravelines 24, 1000 Bruxelles

FIERCE

I M M O

Reference	7257603
Price	€ 997.000
Ground surface	145m ²
Living surface	282m ²
Terrace surface	8m ²
Bedrooms	4
Bathrooms	2

Description

EUROPEAN QUARTER - Fierce Immo is proud to present this magnificent 282 sqm. mansion with 4 bedrooms, terrace and garden.

How can you resist this eclectic-style house with its high ceilings, ancient mouldings, modern and functional kitchen, beautiful garden, 4 beautiful bedrooms, and so on? In short, it offers old-world charm and modern comfort.

The house is laid out as follows: on the ground floor, you will find a beautiful, bright living room, a large dining room perfect for entertaining family and friends, and a modern, fully equipped open-plan kitchen.

You will have access to a beautiful terrace and garden, a real relaxation area where you can enjoy a moment of calm in the heart of the city.

In the basement, you will find a large space for bicycles, a large laundry room and a second access to the garden.

On the first floor, you will find a modern shower room, two large bedrooms and a dressing area.

On the second floor, you will find a shower room with WC, a large bedroom and access to the attic, which can be used as a fourth bedroom or office. Each bedroom enjoys plenty of natural light thanks to the large double-glazed windows.

To complete the picture, there are solar panels, condensation gas heating system, solar water heater and water softener. PEB D. Electricity compliant. Don't delay, come and view today!

Essential info

Reference	7257603
Type	House
Ground surface	145m ²
Living surface	282m ²
Terrace surface	8m ²
Garden surface	50m ²
Year of construction	1901
Year of renovation	2020
Availability	At the contract

Required info

EPC Value	182
EPC Label	D
EPC Code	202201140000603305013
Urban planning destination	Living zone
Urban planning permit	Unknown
Subdivision permit	Unknown
Summons	No
Court decision	No
Right to sell	No
O-Level	Not located in flood area

Layout

Toilets 3

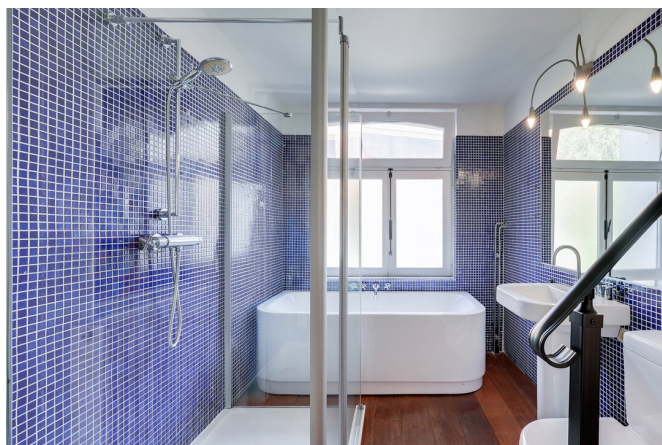
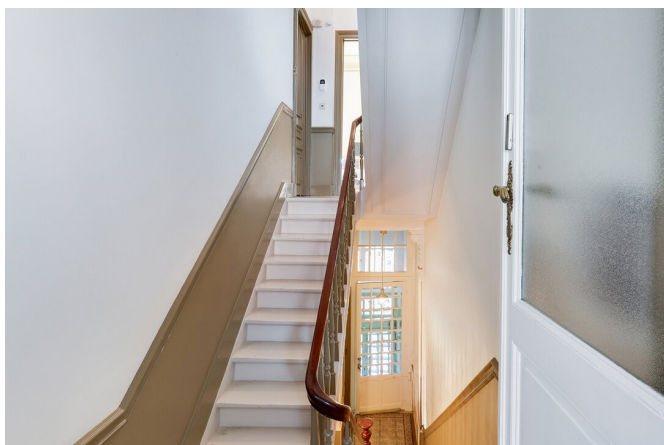
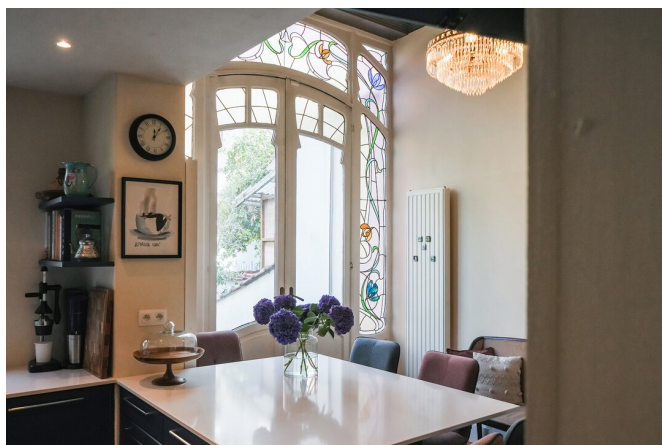
FIERCE

I M M O



FIERCE

I M M O



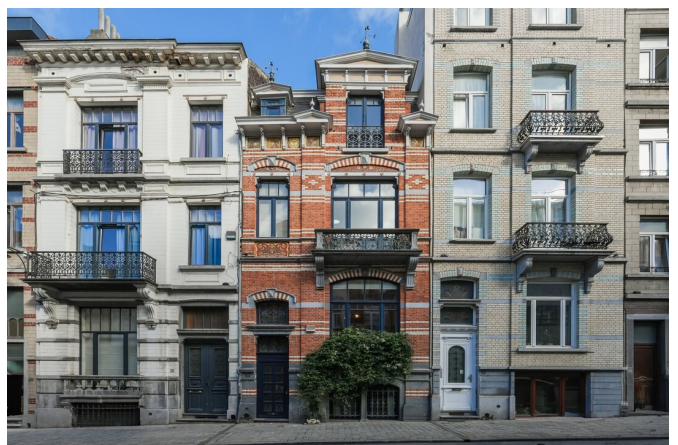
FIERCE

I M M O



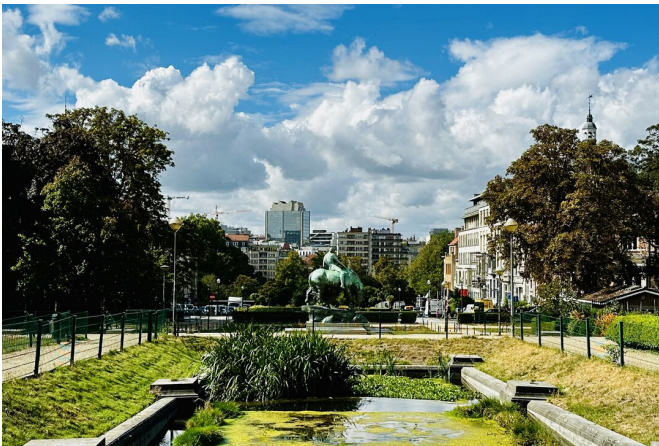
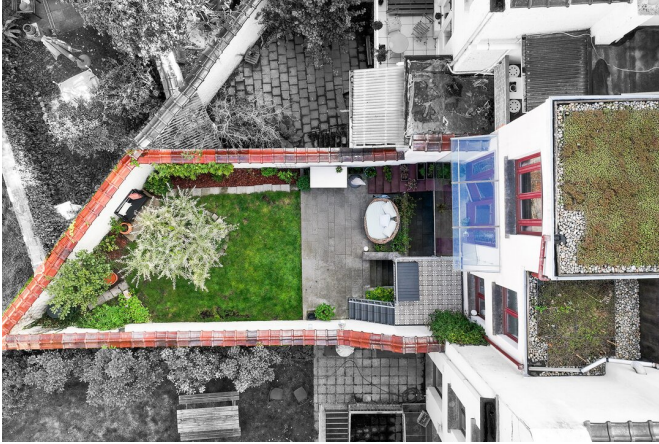
FIERCE

I M M O



FIERCE

I M M O



Interested in this estate?

Contact us for more information



Michaël Baert

Responsible New constructions - IPI 512.639

- T. +32 472 46 93 44
- E. michael@fierceimmo.com

FIERCE

I M M O