

FIERCE

I M M O



CHARMANTE MAISON 4 CHAMBRES + JARDIN

Tolstraat 4, 9550 Herzele

FIERCE

I M M O

Reference	7653544
Price	€ 220.000
Ground surface	255m ²
Living surface	187m ²
Bedrooms	3
Bathrooms	1

Description

Located opposite the magnificent Kasteel van Steenhuize-Wijnhuize, ideally positioned between Ninove and Zottegem, discover this charming house offering 3 bedrooms, a convertible attic, and a pleasant south-facing garden.

The property is composed as follows:

On the ground floor, three adjoining rooms including a bright living room, a welcoming dining room, and a fully equipped kitchen. At the rear, a technical/laundry area with boiler as well as additional storage space complete this level.

On the first floor, the night hall leads to three spacious bedrooms and a large bathroom fitted with both a bathtub and a shower.

The property also benefits from a convertible attic, offering great extension potential according to your needs.

Outside, a small rear passage leads to the fully south-facing garden, ideal for enjoying sunny days to the fullest.

A home full of potential, ideal for a family or as a first-time purchase!

A must-see property!!

FIERCE

I M M O

Essential info

Reference	7653544
Type	House
Ground surface	255m ²
Living surface	187m ²
Garden surface	125m ²
Year of construction	1950
Year of renovation	2025
Availability	At the contract

Required info

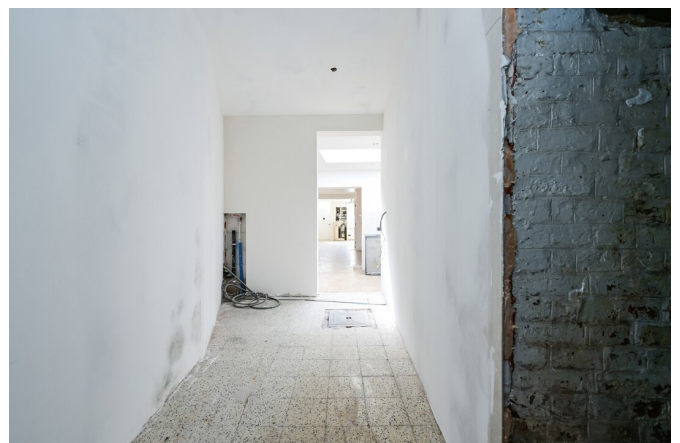
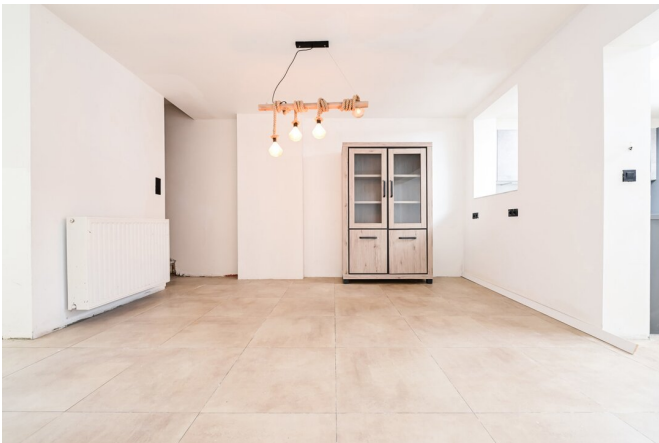
EPC Value	279
EPC Label	C
EPC Code	20260317-0003824675-RES-1
Urban planning destination	Living zone
Urban planning permit	No
Subdivision permit	No
Summons	No
Court decision	No
Right to sell	No
O-Level	Not located in flood area

Layout

Toilets 1

FIERCE

I M M O



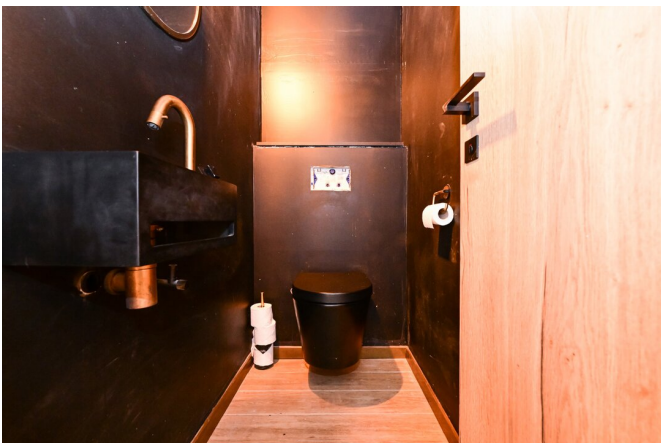
FIERCE

I M M O



FIERCE

I M M O



FIERCE

I M M O



FIERCE

I M M O



FIERCE

I M M O

Interested in this estate?

Contact us for more information



Florent Gossart

Founder | Sales | Rent - IPI 513.507

- T. +32 499 08 92 77
- E. info@fierceimmo.com

FIERCE

I M M O