

# FIERCE

I M M O

FIERCE  
I M M O

**JOURNÉE  
PORTES  
OUVERTES**

**QUAND ?**

**SAMEDI 25 AVRIL**  
**10H00 - 12H00**

 **QUAI AU FOIN 59, 1000 BRUXELLES**

**IL RESTE  
2 APPARTEMENTS  
NEUFS DE STANDING  
DE 3 CHAMBRES**

The advertisement features a large background image of a modern, multi-story apartment building with a white facade and dark window frames. A circular inset shows three people (two men and one woman) standing in a bright, modern interior space, possibly a penthouse. The text is overlaid on a teal gradient background on the left side of the image.

## CITY CENTRE: wonderful penthouse - Open day on 25/04

Quai au Foin 59, 1000 Bruxelles

# FIERCE

I M M O

<b>Reference</b>	7594419
<b>Price</b>	€ 1.495.000
<b>Ground surface</b>	299m <sup>2</sup>
<b>Living surface</b>	197m <sup>2</sup>
<b>Terrace surface</b>	69m <sup>2</sup>
<b>Bedrooms</b>	3
<b>Bathrooms</b>	3

## Description

CITY CENTRE - In the highly sought-after "Quais" neighbourhood, close to numerous amenities (shops, restaurants, public transport), FIERCE IMMO presents the last units in the 'UNIQ' project: from studio to 3-bedroom apartment. In addition to its strategic location, this project will appeal to you with its contemporary architecture and brightness.

Every detail has been carefully selected by the developer to ensure the project's long-term sustainability, complying with the latest environmental standards (PEB A) and offering everyday comfort with a rare attention to detail.

Large common area for bicycles. Cellar and parking available at an additional cost. Sale subject to registration fees and VAT (6% possible under certain conditions).

Contact us now to view the last remaining units on 02 / 420 65 01.

# FIERCE

I M M O

## Essential info

<b>Reference</b>	7594419
<b>Type</b>	Flat
<b>Ground surface</b>	299m <sup>2</sup>
<b>Living surface</b>	197m <sup>2</sup>
<b>Terrace surface</b>	69m <sup>2</sup>
<b>Year of construction</b>	2025
<b>Availability</b>	Immediately
<b>Elevator available</b>	Yes

## Required info

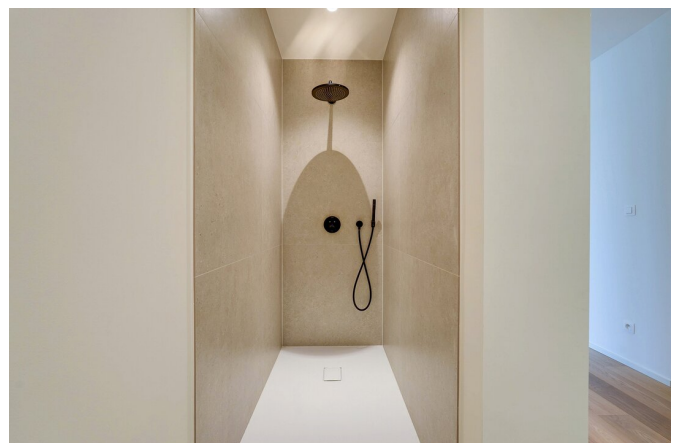
<b>EPC Value</b>	37
<b>EPC Label</b>	A
<b>Urban planning destination</b>	Unknown
<b>Urban planning permit</b>	Yes
<b>Subdivision permit</b>	Unknown
<b>Summons</b>	Unknown
<b>Court decision</b>	No
<b>Right to sell</b>	No
<b>O-Level</b>	Not located in flood area

## Layout

**Toilets** 2

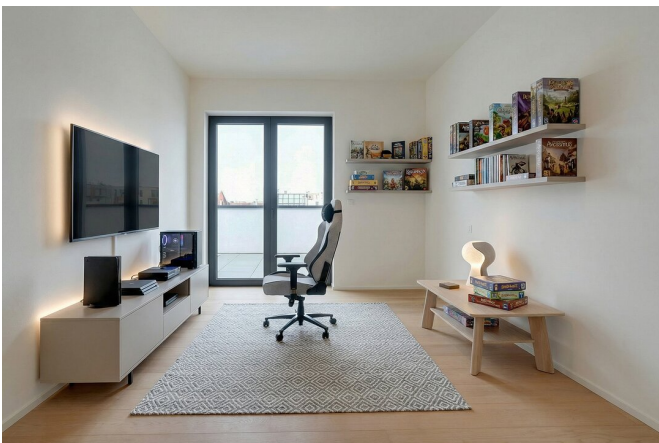
# FIERCE

I M M O



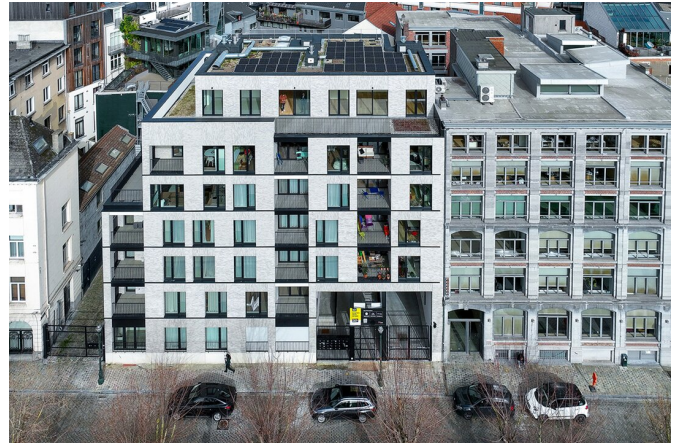
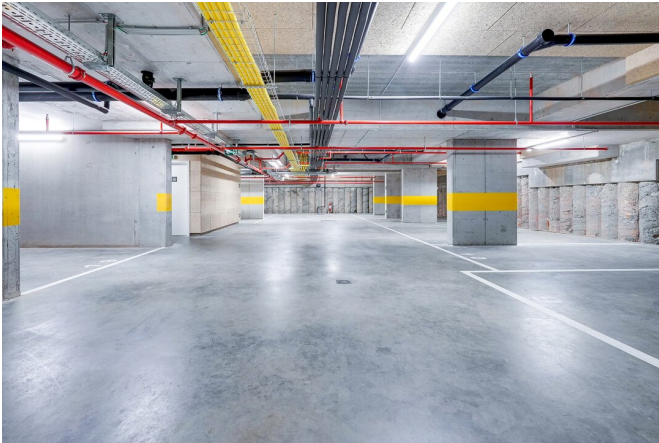
# FIERCE

I M M O



# FIERCE

I M M O



# FIERCE

I M M O

## Interested in this estate?

Contact us for more information



### Michaël Baert

Responsible New constructions - IPI 512.639

- T. +32 472 46 93 44
- E. [michael@fierceimmo.com](mailto:michael@fierceimmo.com)

FIERCE

I M M O