

FIERCE

I M M O



PARC ROYAL - Exceptional 5-bedroom mansion fully renovated

Rue Royale 83, 1000 Bruxelles

FIERCE

I M M O

Reference	7558135
Price	€ 1.650.000
Ground surface	178m ²
Living surface	602m ²
Terrace surface	15m ²
Bedrooms	5
Bathrooms	5

Description

Do you dream of a mansion in the heart of Brussels, just a stone's throw from parks, museums, and restaurants? Ideally located in the immediate vicinity of the Parc Royal, Fierce Immo is delighted to present this sumptuous, prestigious triplex house of over 600 sqm., nestled within a mansion that subtly combines old-world charm with contemporary comfort.

Renovated with extreme care and attention to detail, the property offers spacious living rooms and reception areas enhanced by period moldings, impressive high ceilings, and a magnificent working fireplace.

Feeling hungry? The fully equipped Bulthaup kitchen will delight food lovers and allow you to give free rein to your culinary talents... after an invigorating session in your private gym.

The house has five bedrooms, each with its own bathroom and dressing room.

The ground floor is ideal for professional practice.

A service apartment with a separate entrance completes the property—ideal for a student or au pair.

Secure, covered parking spaces (optional, not mandatory). PEB C. Individual gas boiler. Electricity compliant.

For more information or to arrange a viewing, contact us today!

FIERCE

I M M O

Essential info

Reference	7558135
Type	House
Ground surface	178m ²
Living surface	602m ²
Terrace surface	15m ²
Year of construction	1848
Year of renovation	2009
Availability	At the contract

Required info

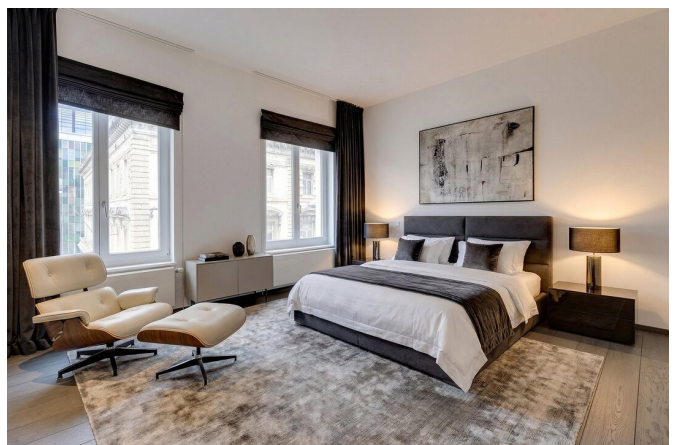
EPC Value	208
EPC Label	D
EPC Code	202511130000733916014
Urban planning destination	Living zone
Urban planning permit	Yes
Subdivision permit	Yes
Summons	No
Court decision	No
Right to sell	No
O-Level	Not located in flood area

Layout

Toilets	6
Parking places	1

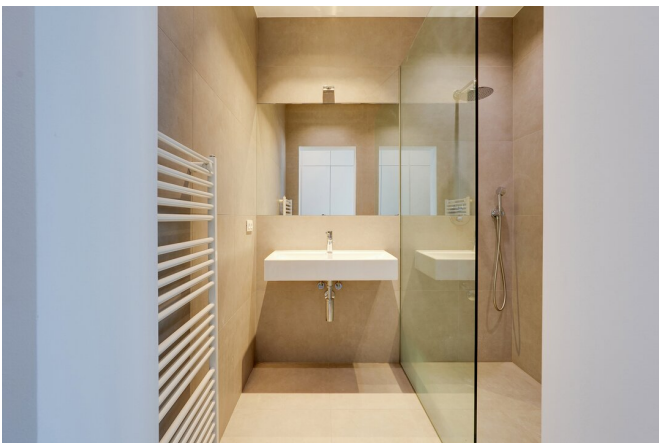
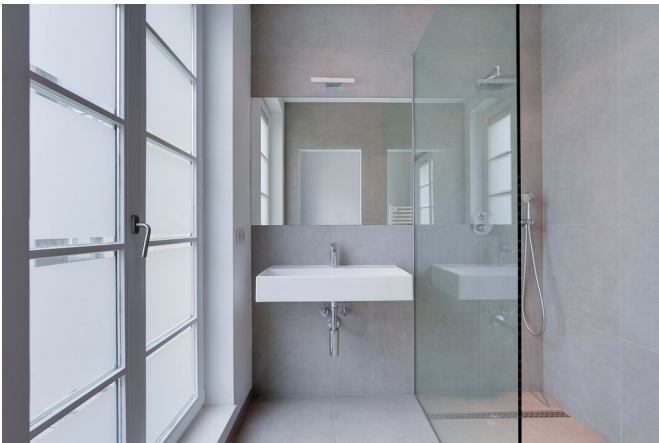
FIERCE

I M M O



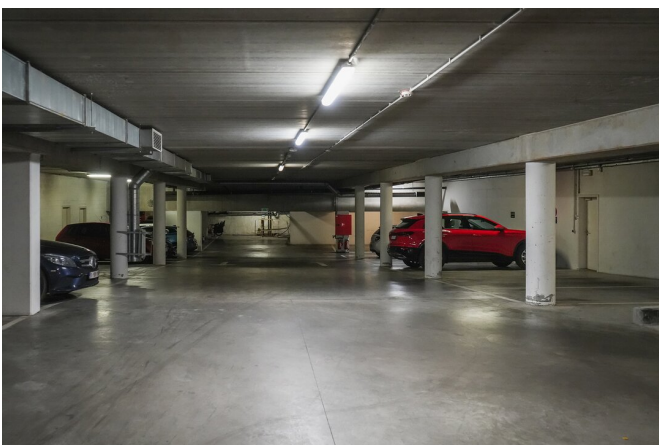
FIERCE

I M M O



FIERCE

I M M O



FIERCE

I M M O



FIERCE

I M M O

Interested in this estate?

Contact us for more information



Michaël Baert

Responsible New constructions - IPI 512.639

- T. +32 472 46 93 44
- E. michael@fierceimmo.com

FIERCE

I M M O