

FIERCE

I M M O



SUPERB DUPLEX IN THE CENTRE OF WAVRE!!

Rue de Namur 12, 1300 Wavre

FIERCE

I M M O

Reference	7557462
Price	€ 149.000
Ground surface	74m ²
Living surface	50m ²
Bedrooms	1
Bathrooms	1

Description

Just steps from the center of Wavre, discover this rare opportunity: a duplex ideal for investment, offering immediate profitability.

This project is perfect for a buy-to-sell strategy!

Currently rented for €470 per month excluding charges, this property generates €5,640 per year. The rental potential as is would be €6,600 per year. Energy Performance Certificate (EPC) rating: C. Ideally located in the immediate vicinity of Wavre center, shops, transport, and amenities. A rare opportunity for investors seeking a simple, tenanted, and profitable property.

FIERCE

I M M O

Essential info

Reference	7557462
Type	Flat
Ground surface	74m ²
Living surface	50m ²
Year of construction	1940
Availability	Immediately

Required info

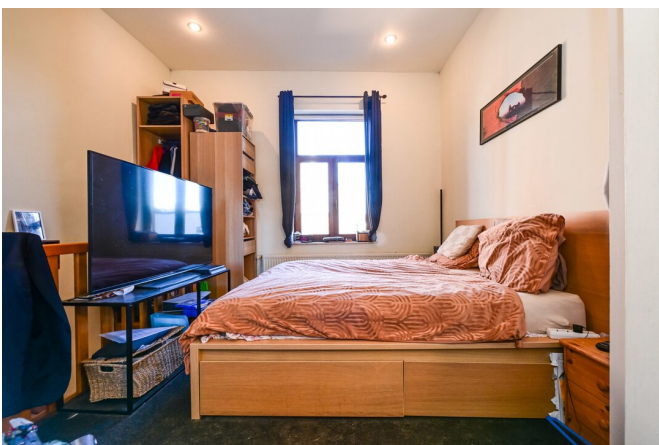
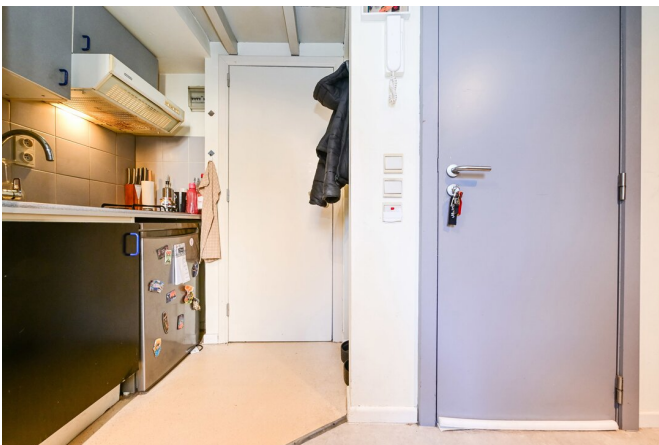
EPC Value	202
EPC Label	C
Urban planning destination	Unknown
Urban planning permit	Unknown
Subdivision permit	No
Summons	Unknown
Court decision	Unknown
Right to sell	No
O-Level	Not located in flood area

Layout

Toilets 5

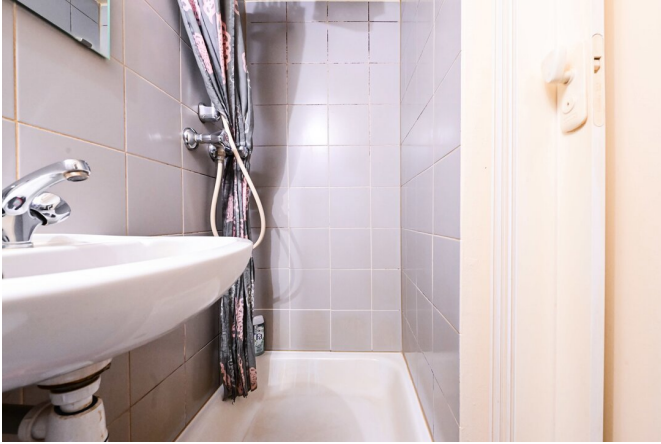
FIERCE

I M M O



FIERCE

I M M O



FIERCE

I M M O

Interested in this estate?

Contact us for more information



Noah Todaro

Real estate advisor - IPI 800.066

- T. +32 492 40 78 05
- E. noah@fierceimmo.com

FIERCE

I M M O