

FIERCE

I M M O



GROUND FLOOR OFFICE – GREAT RENTAL INVESTMENT

Avenue du Thym 1 5, 1080 Molenbeek-Saint-Jean

Reference

7696277

Price

From € 100.000

Living surface

30m²

FIERCE

I M M O

Description

Just steps away from Louis Mettwie Boulevard, discover this rare opportunity: an office space ideal for investment.

Possibility to convert it into a studio!!!

The property consists of a private entrance with a reception area where visitors can comfortably sit, a toilet, and a large room filled with natural light, offering a pleasant and professional working environment. You will also find a cabinet with sink, as well as an office area providing additional everyday comfort.

An excellent opportunity for investors or self-employed professionals looking for a functional and well-located property.

A MUST SEE!!

Essential info

Reference	7696277
Type	Office
Living surface	30m ²
Year of construction	1990
Year of renovation	2020
Availability	At the contract

Required info

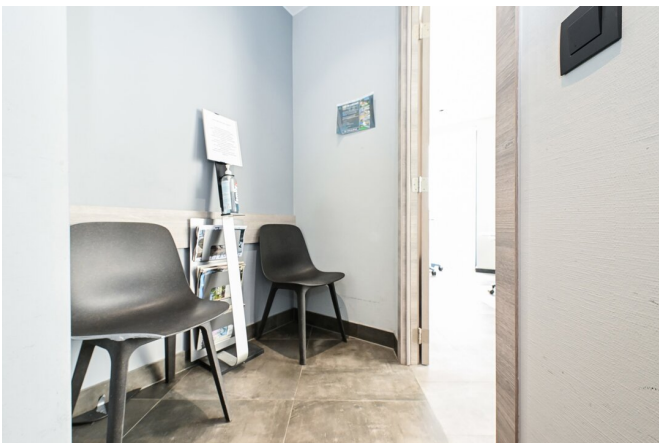
Urban planning destination	Unknown
Urban planning permit	No
Subdivision permit	No
Summons	Unknown
Court decision	No
Right to sell	No
O-Level	Not located in flood area

Layout

Toilets 1

FIERCE

I M M O



FIERCE

I M M O



FIERCE

I M M O

Interested in this estate?

Contact us for more information

Fierce Immo

• T. 02 420 65 01

FIERCE

I M M O