

FIERCE

I M M O

Action sur la TVA !
Kortingsakte op de BTW!



New construction in Laeken - Temporary VAT promotion!

Rue de la Briqueterie 44-46, 1020 Bruxelles

FIERCE

I M M O

Reference	7622741
Price	€ 390.000
Ground surface	1780m ²
Living surface	133m ²
Terrace surface	11m ²
Bedrooms	3
Bathrooms	2

Description

LAEKEN - You will fall in love with this new project with its meticulous finishes! Firstly, because of its location: situated between Place Bockstael and the Tour & Taxis site, a stone's throw from public transport, shops and restaurants on Rue Marie Christine or Tour & Taxis. Brussels city centre is also nearby. Secondly, its human scale: 24 apartments within a block. Then there is the layout of the apartments, all of which offer: a large living area, a fully equipped open-plan kitchen, 2 or 3 beautiful bedrooms, a large bathroom, a separate WC with washbasin, a laundry area and a large balcony or terrace. Finally, it is innovative in its energy-saving solutions: double glazing, photovoltaic panels, etc. PEB A and B. Subject to registration fees and VAT. For any purchase agreement signed before July 31, the real estate developer will reimburse part of the VAT!

Would you like to visit one of the apartments still available? Simply contact us on 02 / 420 65 01.

FIERCE

I M M O

Essential info

Reference	7622741
Type	Flat
Ground surface	1780m ²
Living surface	133m ²
Terrace surface	11m ²
Year of construction	2024
Availability	At the contract
Elevator available	Yes

Required info

EPC Value	42
EPC Label	A
EPC Code	20250704-0000720542-01-0
Urban planning destination	Living zone
Urban planning permit	Yes
Subdivision permit	Yes
Summons	No
Court decision	No
Right to sell	No
O-Level	Not located in flood area

Layout

Toilets	2
Parking places	1

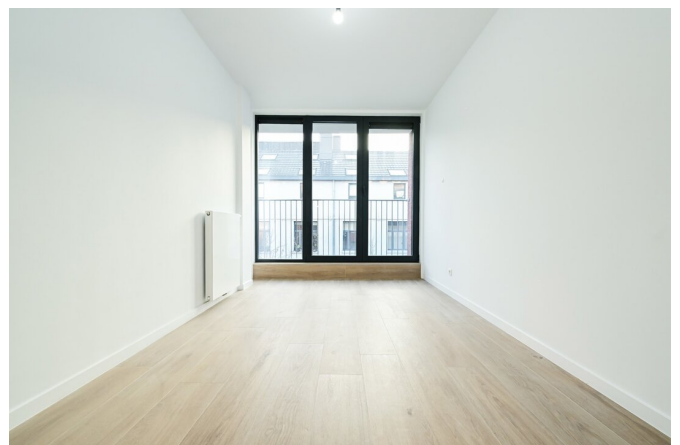
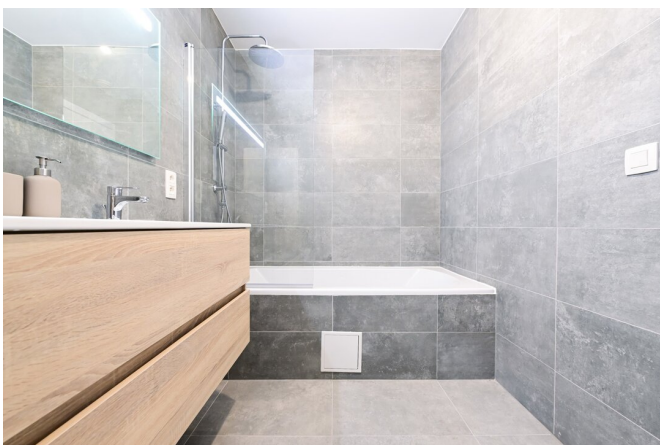
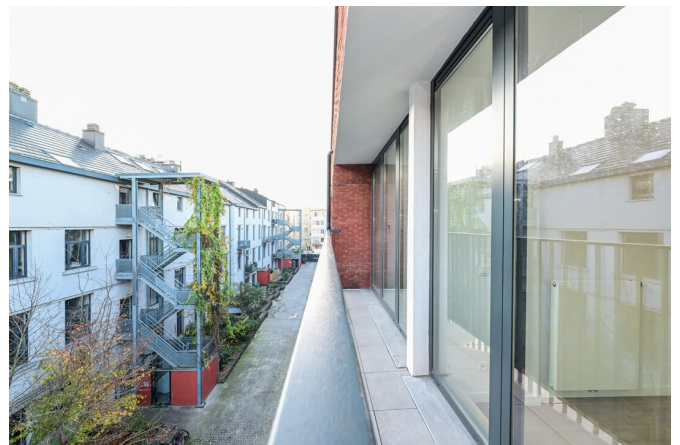
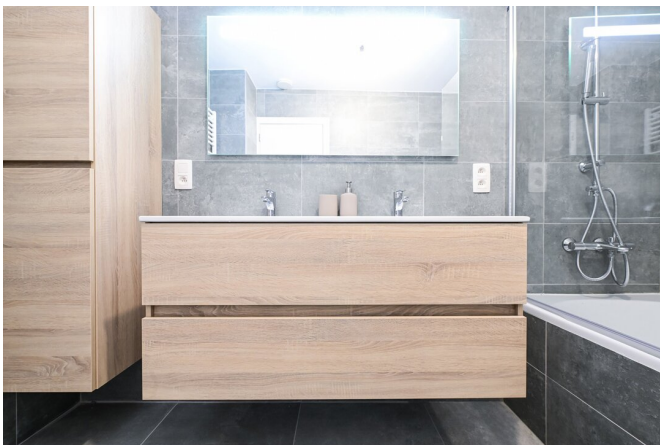
FIERCE

I M M O



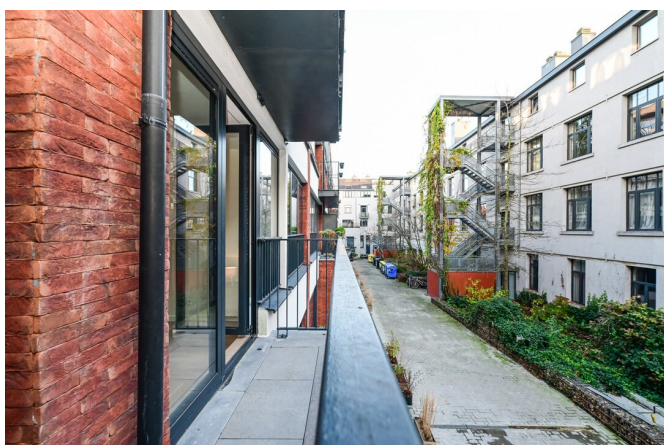
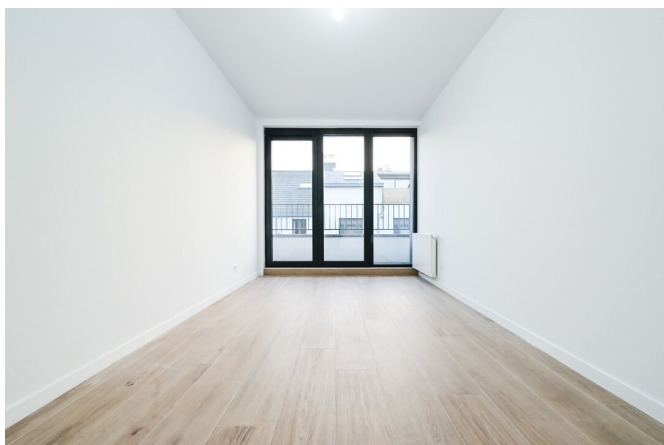
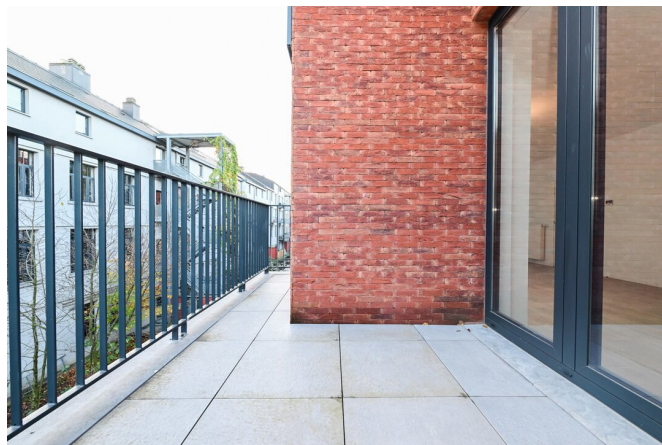
FIERCE

I M M O



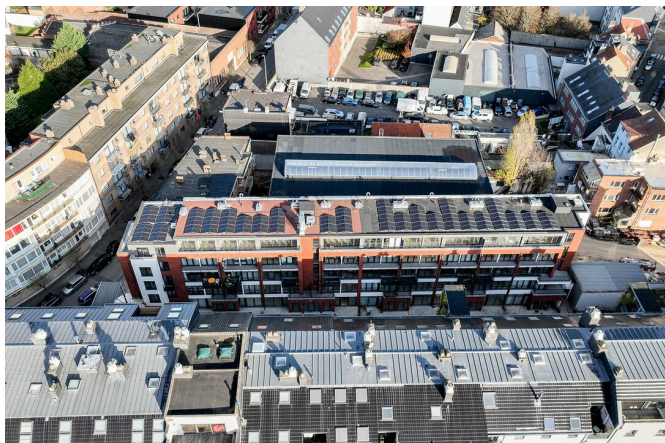
FIERCE

I M M O



FIERCE

I M M O



FIERCE

I M M O

Interested in this estate?

Contact us for more information



Michaël Baert

Responsible New constructions - IPI 512.639

- T. +32 472 46 93 44
- E. michael@fierceimmo.com

FIERCE

I M M O