

FIERCE

I M M O



WORKSHOP/WAREHOUSE – IN A SECURE REAR BUILDING

Boulevard de la Révision 67A, 1070 Anderlecht

Reference	7736922
Price	€ 515.000
Total surface area	1200m ²
Living surface	800m ²

Description

Right in the centre of Anderlecht, close to all amenities, discover our attractive, versatile warehouse of approximately 800 m². Ideal for business use or investment.

Situated at the rear of a block, this warehouse of approximately 800 m² offers a wide range of potential uses. It comprises several spaces spread over four levels of approximately 100 m², with high ceilings and a goods lift to facilitate the movement of goods. The property has two emergency exits and a recently replaced roof.

Perfect for a manufacturing business, a workshop, storage, offices or a showroom. Its flexible layout also makes it an excellent investment opportunity.

A MUST-SEE!

Essential info

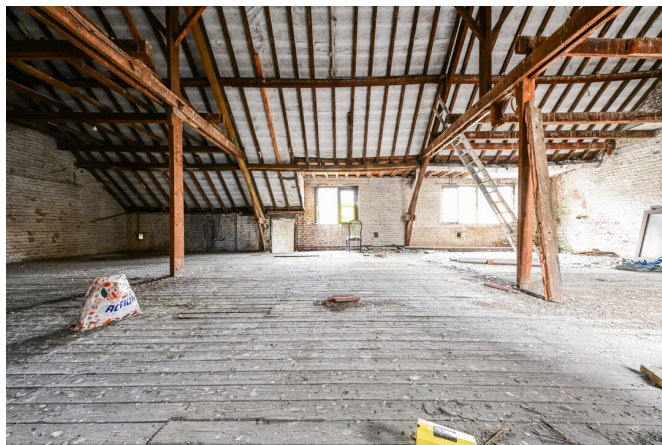
Reference	7736922
Type	Industrial
Ground surface	1200m ²
Living surface	800m ²
Year of construction	1930
Availability	At the contract
Elevator available	Yes

Required info

Urban planning destination	Recreation areas
Urban planning permit	No
Subdivision permit	No
Summons	No
Court decision	No
Right to sell	No
O-Level	Not located in flood area

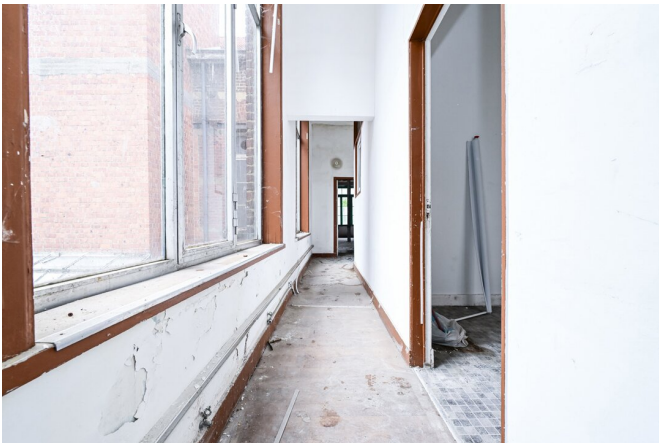
FIERCE

I M M O



FIERCE

I M M O



FIERCE

I M M O



FIERCE

I M M O

Interested in this estate?

Contact us for more information

Fierce Immo

• T. 02 420 65 01

FIERCE

I M M O