



Ideally located parking in Evere

Avenue Franz Guillaume 65, 1140 Evere

Reference	7759407
Price	€ 18.500
Living surface	12.45m ²
Garages	1

Description

Ideally located in Evere—a parking space situated in a residential area, making it a great investment opportunity.

Estimated rental income: €1,150/year.

Very low building service charges.

Dimensions: 4.98m length, 2.50m width, 2.13m height.

Available immediately!

Essential info

Reference	7759407
Type	Garage / parking
Living surface	12.45m ²
Year of construction	1950
Availability	Immediately

Required info

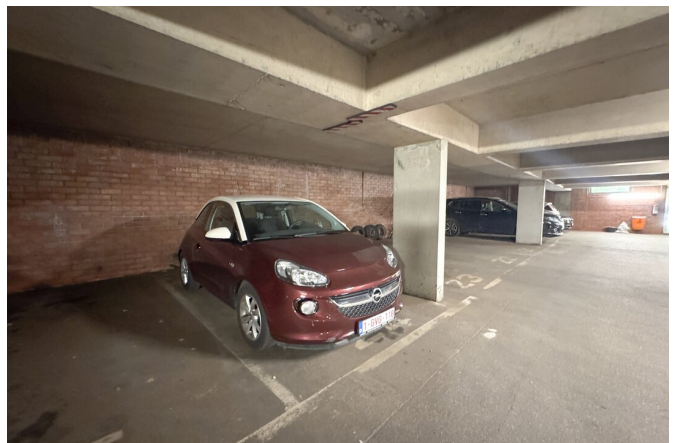
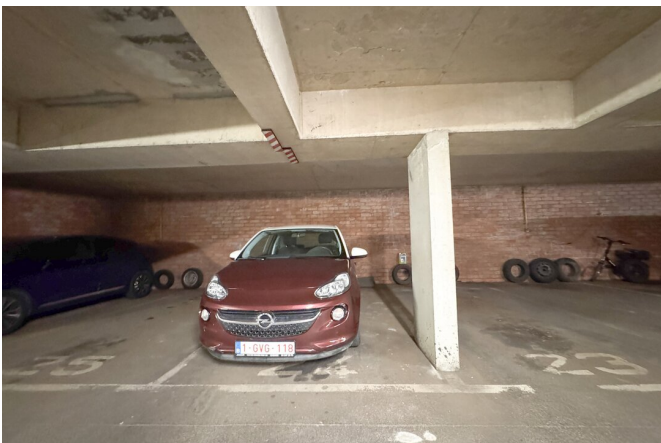
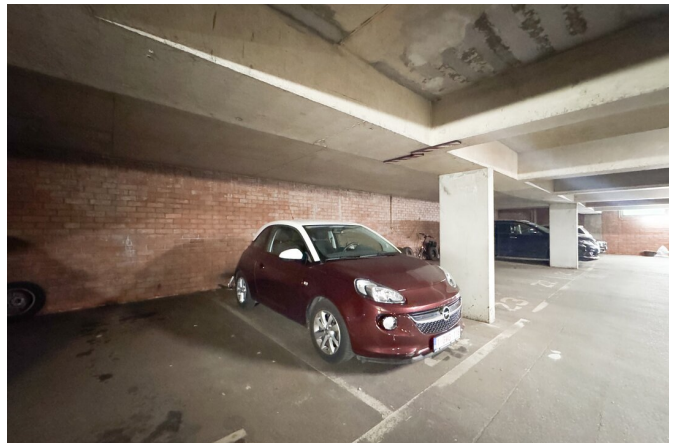
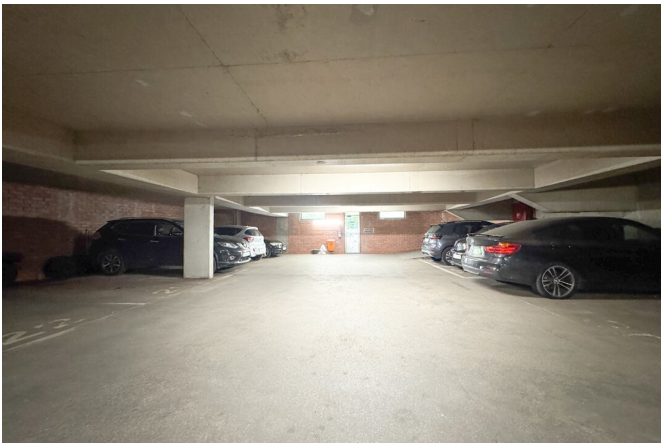
Urban planning destination	Unknown
Urban planning permit	Unknown
Subdivision permit	Unknown
Summons	Unknown
Court decision	Unknown
Right to sell	Unknown
O-Level	Not located in flood area

Layout

Garages	1
----------------	---

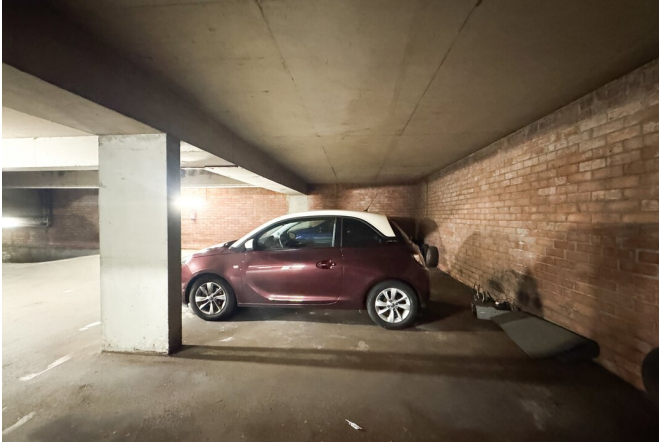
FIERCE

I M M O



FIERCE

I M M O



FIERCE

I M M O

Interested in this estate?

Contact us for more information



Noah Todaro

Real estate advisor - IPI 800.066

- T. +32 492 40 78 05
- E. noah@fierceimmo.com

FIERCE

I M M O