

FIERCE

I M M O



Ideally located car park – Galerie de la Reine

Rue d'Assaut 5, 1000 Bruxelles

Reference	7759412
Price	€ 28.000
Living surface	15.7m ²

FIERCE

I M M O

Description

Ideally located just steps from the Galerie de la Reine, this parking space is situated in a mixed residential and office area—an excellent investment opportunity.

Estimated rental income: €2,160/year.

Very low building service charges.

Dimensions: 5.53m length, 2.85m width, 2.12m height.

Can accommodate a small van.

Available immediately!

Essential info

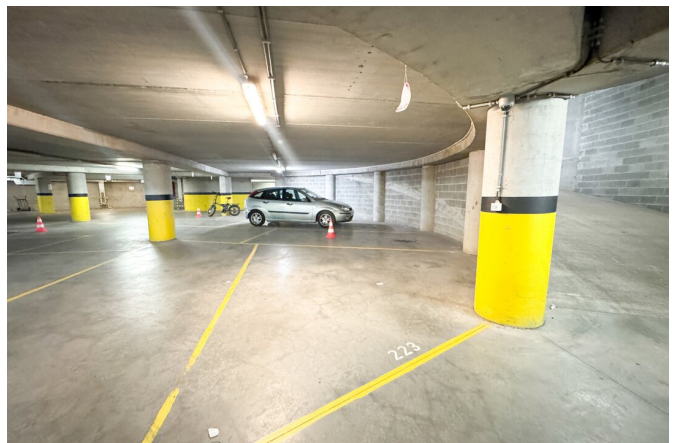
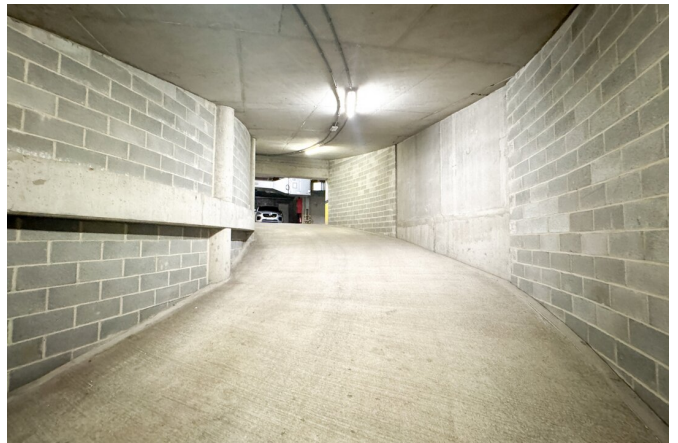
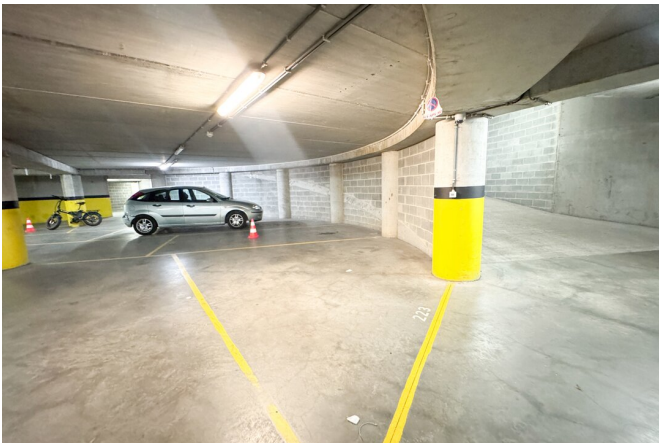
Reference	7759412
Type	Garage / parking
Living surface	15.7m ²
Year of construction	1975
Availability	Immediately

Required info

Urban planning destination	Unknown
Urban planning permit	Unknown
Subdivision permit	Unknown
Summons	Unknown
Court decision	Unknown
Right to sell	Unknown
O-Level	Not located in flood area

FIERCE

I M M O



FIERCE

I M M O



FIERCE

I M M O

Interested in this estate?

Contact us for more information



Noah Todaro

Real estate advisor - IPI 800.066

- T. +32 492 40 78 05
- E. noah@fierceimmo.com

FIERCE

I M M O