

FIERCE

I M M O



Open Day on Saturday 11 July from 10AM
to 12AM!

chaussée Romaine 974, 1780 Wemmel

FIERCE

I M M O

Reference	7752972
Price	€ 665.000
Ground surface	1225m ²
Living surface	315m ²
Terrace surface	30m ²
Bedrooms	4
Bathrooms	2
Garages	1

Description

WEMMEL, a sought-after commune on the outskirts of Brussels, offers an ideal living environment that combines tranquility with easy access. FIERCE IMMO is delighted to present, on an exclusive basis, this spacious 315 sqm. villa, perfectly designed for a family seeking comfort, space and natural light.

Upon entering, you will be captivated by a majestic hall with a staircase leading to a vast and bright living area comprising a spacious living room and dining room. The ground floor also features a brand-new, fully fitted kitchen, a separate toilet, and a large conservatory opening onto a pleasant 1000sqm. north-west facing garden. On the first floor, the house offers four beautiful bedrooms, a large bathroom, a shower room and a separate toilet, providing all the comfort needed for a harmonious family life.

In the attic, an additional space allows you to create, as you wish, a fifth bedroom, a family room or even a multi-purpose space.

The basement comprises several cellars, a utility area, and a space that could easily be converted into a gym or leisure area. A large locked garage completes this property.

Fancy discovering this exceptional property? Contact us on 02/420 65 01 to arrange a viewing.

FIERCE

I M M O

Essential info

Reference	7752972
Type	House
Ground surface	1225m ²
Living surface	315m ²
Terrace surface	30m ²
Garden surface	1000m ²
Year of construction	1964
Year of renovation	2006
Availability	At the contract

Required info

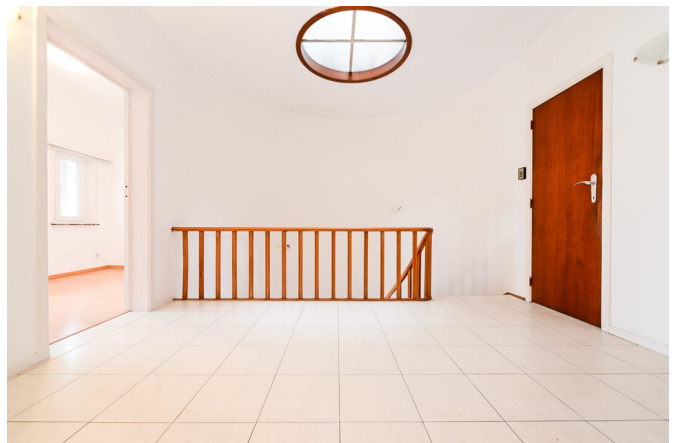
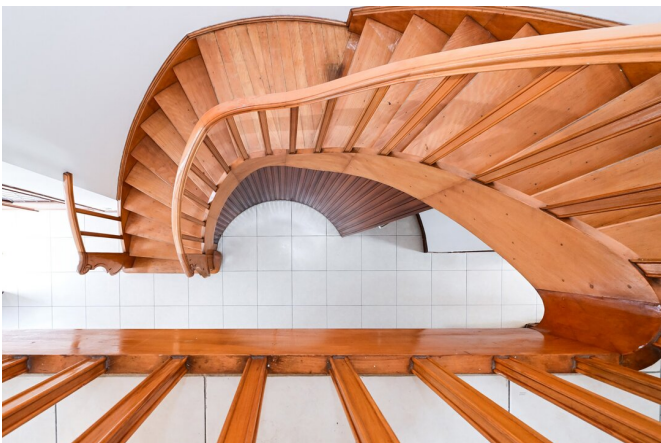
EPC Value	374
EPC Label	D
EPC Code	20250704-0003640473
Urban planning destination	Living zone
Urban planning permit	Yes
Subdivision permit	Yes
Summons	No
Court decision	No
Right to sell	No
O-Level	Not located in flood area

Layout

Toilets	4
Garages	1
Parking places	1

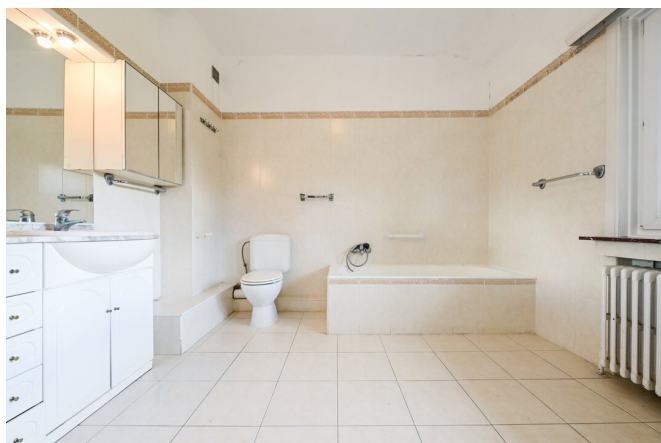
FIERCE

I M M O



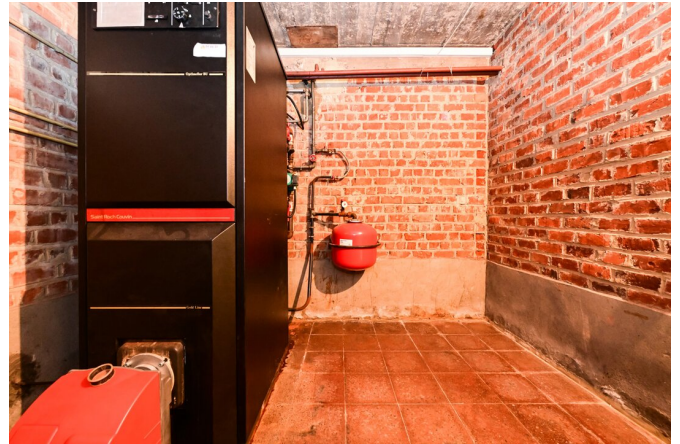
FIERCE

I M M O



FIERCE

I M M O



FIERCE

I M M O

Interested in this estate?

Contact us for more information



Michaël Baert

Responsible New constructions - IPI 512.639

- T. +32 472 46 93 44
- E. michael@fierceimmo.com

FIERCE

I M M O