



New construction of quality in Laeken - sold at 100%!

Rue de la Briqueterie 13-15, 1020 Bruxelles

Reference

6115160

Price

€ 312.000 - € 312.000

Description

LAEKEN - You'll fall in love with this new construction project with its very nice finitions! Firstly, its location: between Place Bockstael and the Tour et Taxis site, just a stone's throw from public transport, shops and restaurants on Rue Marie Christine or Tour et Taxis. Downtown Brussels is also close by. Secondly, its human scale: 13 apartments in two small buildings. Secondly, the layout of the apartments, all of which offer: a large living area, a superbly equipped open kitchen, two bedrooms, a large shower room, a separate toilet with washbasin, a laundry area, a large balcony or garden. A cellar. Innovative energy-saving solutions: double glazing, LED lighting, rainwater harvesting, etc. PEB/EPC B. Delivery at the signing of the authentic deed. Would you like a presentation of this project in our Avenue Louise offices? Simply contact us on 02 / 420 65 01.

Ground floor

Type	Reference	Surface	Bedrooms	Price	Status
Flat	6115161	1780 m ²	2	-	Sold
Flat	6115163	1780 m ²	2	-	Sold
Flat	6115164	1780 m ²	2	-	Sold
Flat	6115165	1780 m ²	2	-	Sold
Flat	6115174	1780 m ²	2	-	Sold

Floor 1

Type	Reference	Surface	Bedrooms	Price	Status
Flat	6115167	1780 m ²	2	-	Sold
Flat	6115168	1780 m ²	2	-	Sold
Flat	6115172	1780 m ²	2	€ 312.000	For sale
Flat	6115173	1780 m ²	2	-	Sold
Flat	6115175	1780 m ²	2	-	Sold

Floor 2

Type	Reference	Surface	Bedrooms	Price	Status
Flat	6115169	1780 m ²	2	-	Sold

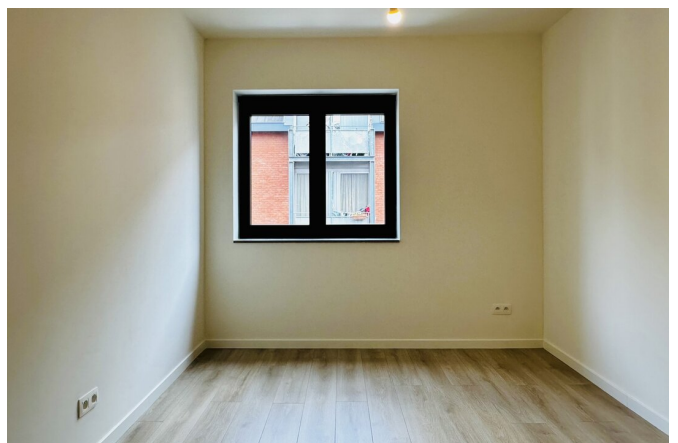
FIERCE

I M M O

Flat	6115170	1780 m ²	2	-	Sold
Flat	6115171	1780 m ²	2	-	Sold

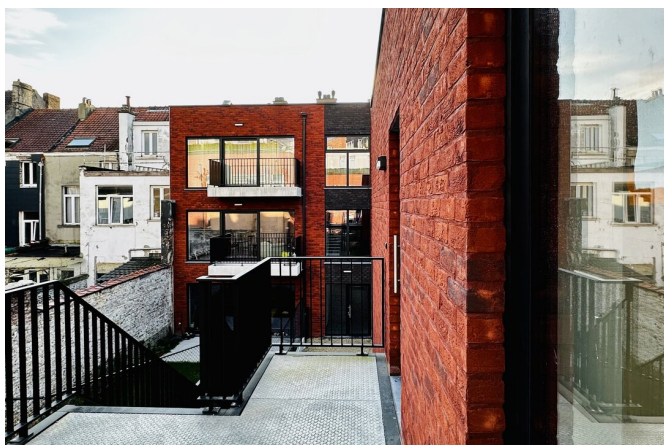
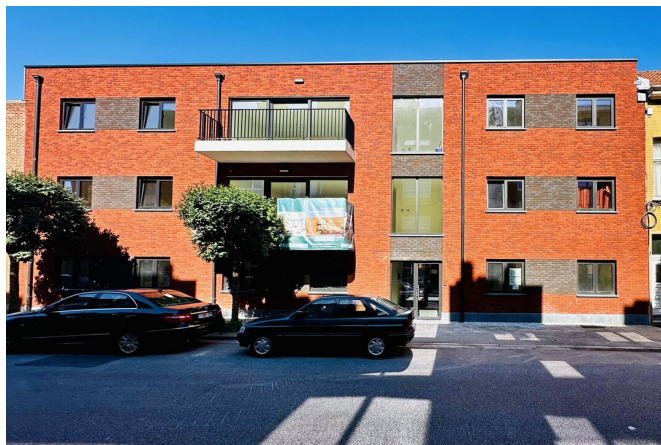
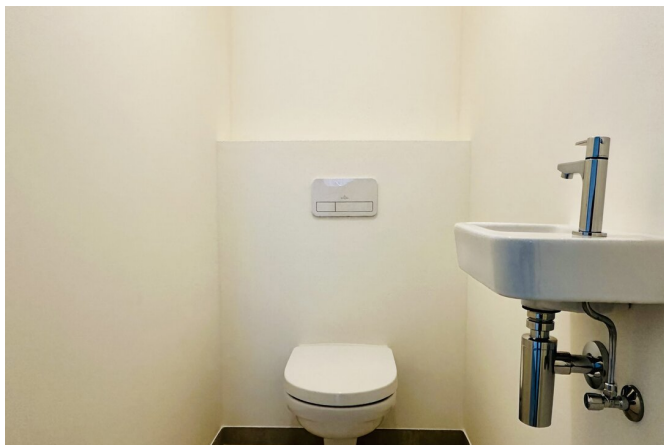
FIERCE

I M M O



FIERCE

I M M O



Interested in this estate?

Contact us for more information



Michaël Baert

Responsible New constructions - IPI 512.639

- T. +32 472 46 93 44
- E. michael@fierceimmo.com

FIERCE

I M M O